

LUBBOCK, TEXAS

HI-ILS or LOC RWY 17R

LOC I-LBB 111.7 Chan 54	APCH CRS 174°	Rwy Ildg 11 500 TDZE 3282 Arprt Elev 3282
---	-------------------------	--

AL-241 [USAF]

LUBBOCK PRESTON SMITH INTL (KLBB)

DME or RADAR required.

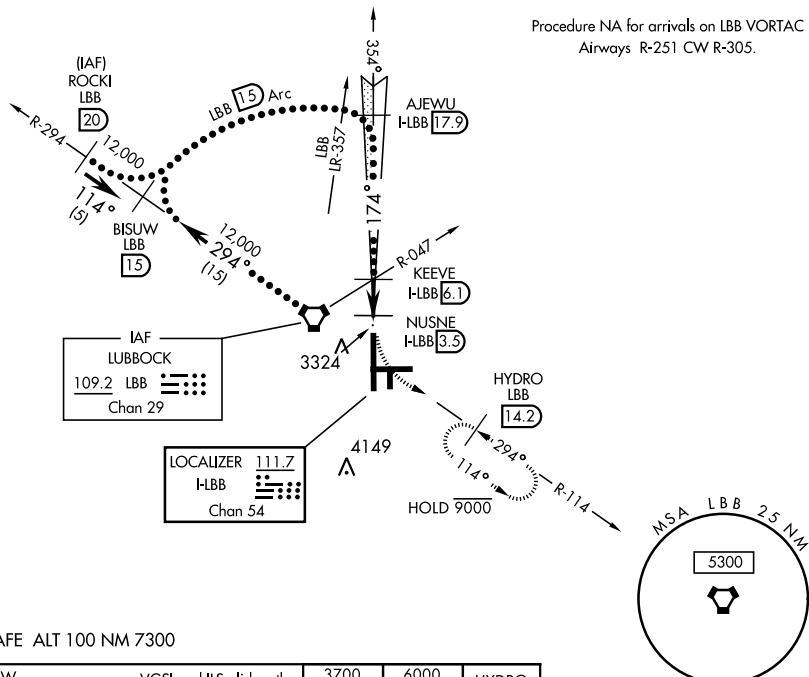


MISSED APPROACH: Climb to 3700, then climbing left turn to 6000 via LBB VORTAC R-114 to HYDRO (LBB 14.2 DME) and hold, continue climb in hold to 6000.

- ▼ * When ALS inop, increase CAT E RVR to 40.
- ▲ ** When ALS inop, increase CAT CDE vis to 1 3/8 mile.
- ▲ *** When ALS inop, increase CAT CDE RVR to 50.

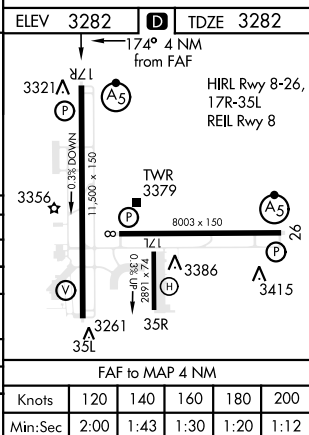
ATIS 125.3 270.275	APP CON 119.2 351.8	TOWER 120.5 239.3	GND CON 121.9 348.6	CLNC DEL 125.8 281.55
------------------------------	-------------------------------	-----------------------------	-------------------------------	---------------------------------

Procedure NA for arrivals on LBB VORTAC
Airways R-251 CW R-305.



EMERG SAFE ALT 100 NM 7300

BISUW LBB (15)	AJEWU H-LBB (17.9)	VGSI and ILS glidepath not coincident (VGSI angle 3.0/TCH 69).	3700	6000	HYDRO LBB (14.2)
12,000	6000	KEEVE LBB R-047 H-LBB (6.1)	4600	NUSNE H-LBB (3.5)	H-LBB (3)
GS 3.00° TCH 53	LBB Arc (15)	4600	3780	H-LBB (2.1)	
CATEGORY		C	D	E	
S-ILS 17R *		3482/24		200 (200-1/2)	
S-LOC 17R **		3780/50		498 (500-1)	
CIRCLING	3880-1 1/2		3940-2		4100-3
	598 (600-1 1/2)		658 (700-2)		818 (900-3)
NUSNE DME FIX MINIMUMS					
S-LOC 17R ***		3620/26		338 (400-3/4)	
CIRCLING	3880-1 1/2		3940-2		4100-3
	598 (600-1 1/2)		658 (700-2)		818 (900-3)



LUBBOCK, TEXAS

33°40'N-101°49'W

LUBBOCK PRESTON SMITH INTL (KLBB)

Amtd 2 02FEB17

HI-ILS or LOC RWY 17R

SC-2, 20 FEB 2025 to 20 MAR 2025

SC-2, 20 FEB 2025 to 20 MAR 2025