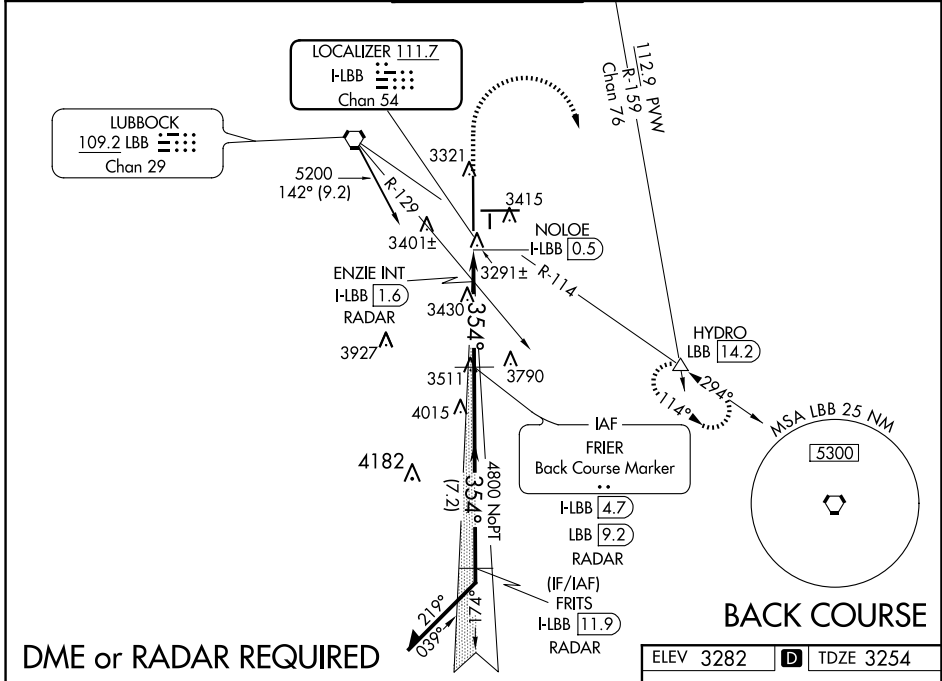


LOC I-LBB 111.7 Chan 54	APP CRS 354°	Rwy Idg TDZE Apt Elev	11500 3254 3282
--------------------------------------	------------------------	-----------------------------	--

LOC BC RWY 35L
LUBBOCK PRESTON SMITH INTL (LBB)

MISSED APPROACH: Climb to 4000 then climbing right turn to 5200 on heading 170° and on LBB VORTAC R-114 to HYDRO INT/LBB 14.2 DME and hold.

ATIS 125.3 270.275	LUBBOCK APP CON 119.2 351.8	LUBBOCK TOWER 120.5 239.3	GND CON 121.9 348.6	CLNC DEL 125.8 281.55
------------------------------	---------------------------------------	-------------------------------------	-------------------------------	---------------------------------



4000	5200	HYDRO	FRIER BCM	Remain within 10 NM
↑	hdg 170°	LBB R-114	I-LBB 4.7	
		△	RADAR	
		ENZIE INT	FRIETS	
		I-LBB 1.6	I-LBB 11.9	
		RADAR	RADAR	
		NOLOE		
		I-LBB 0.5		
		2.89°		
		TCH 54		
		3820	5200	
		0.7	1.1	3.1 NM
				7.2 NM
CATEGORY	A	B	C	D
S-35L	3820-1	566 (600-1)	3820-1½	566 (600-1½)
CIRCLING	3820-1	538 (600-1)	3880-1½	3940-2
			598 (600-1½)	658 (600-2)
ENZIE FIX MINIMUMS				
S-35L	3560-1	306 (300-1)	3560-7/8	306 (300-7/8)
CIRCLING	3720-1	3740-1	3880-1½	3940-2
	438 (500-1)	458 (500-1)	598 (600-1½)	658 (700-2)

