

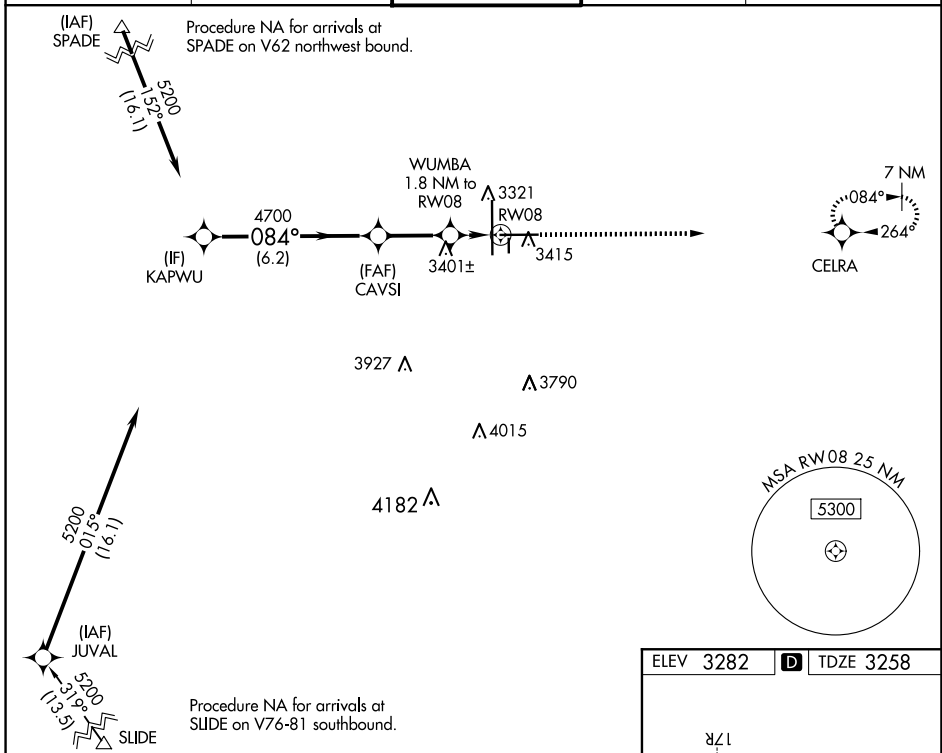
WAAS CH <b>97327</b> W08A	APP CRS <b>084°</b>	Rwy Idg TDZE Apt Elev	<b>8003</b> <b>3258</b> <b>3282</b>
---------------------------------	------------------------	-----------------------------	---

# RNAV (GPS) RWY 8

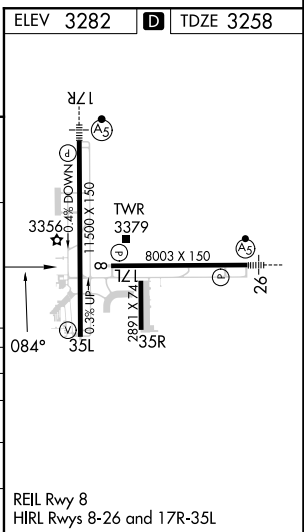
LUBBOCK PRESTON SMITH INTL (LBB)

RNP APCH.	MISSED APPROACH: Climb to 5000 direct CELRA and hold.
▼ For uncompensated Baro-VNAV systems, LNAV/VNAV NA below -10°C or above 52°C.	

ATIS <b>125.3 270.275</b>	LUBBOCK APP CON <b>119.2 351.8</b>	LUBBOCK TOWER <b>120.5 239.3</b>	GND CON <b>121.9 348.6</b>	CLNC DEL <b>125.8 281.55</b>
------------------------------	---------------------------------------	-------------------------------------	-------------------------------	---------------------------------



KAPWU	5200	CAVSI	4700	WUMBA 1.8 NM to RWY 8	5000	CELRA
	GP 3.00° TCH 50		4700	*1 NM to RWY 8	*3880	*LNAV only.
6.2 NM		2.6 NM		0.8 NM	1 NM	
CATEGORY	A	B	C	D	E	
LPV DA	3458-3/4		200 (200-3/4)			
LNAV/VNAV DA	3544-7/8		286 (300-7/8)			
LNAV MDA	3640-1	382 (400-1)	3640-1 1/8	382 (400-1 1/8)		
CIRCLING	3720-1 438 (500-1)	3740-1 458 (500-1)	3880-1 1/2 598 (600-1 1/2)	3940-2 658 (700-2)	4100-3 818 (900-3)	



SC-2, 20 FEB 2025 to 20 MAR 2025

SC-2, 20 FEB 2025 to 20 MAR 2025