

APP CRS <b>354°</b>	Rwy Idg TDZE Apt Elev	<b>11500</b> <b>3254</b> <b>3282</b>
------------------------	-----------------------------	--

# RNAV (RNP) Z RWY 35L

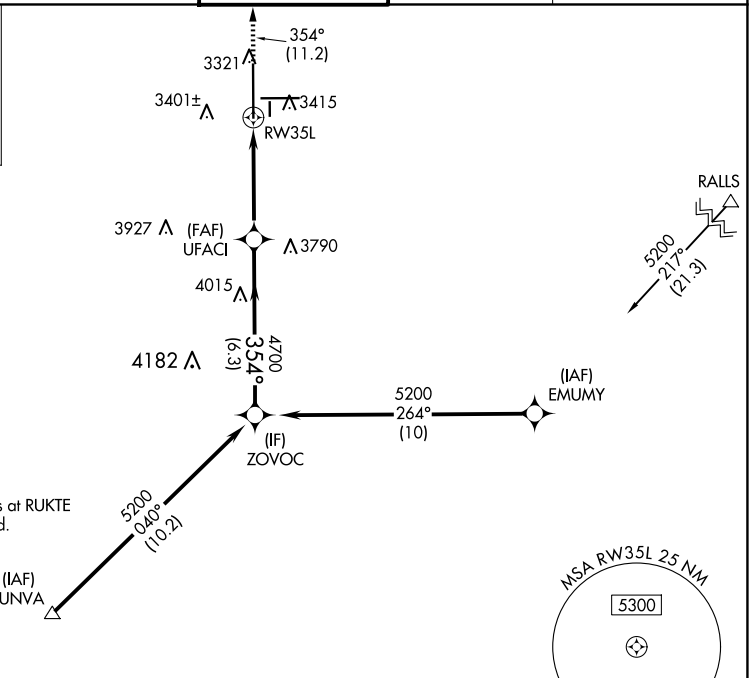
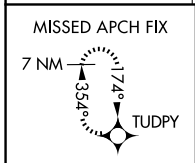
LUBBOCK PRESTON SMITH INTL (LBB)

RNP AR APCH.

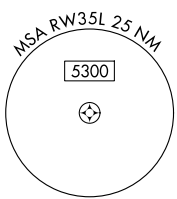
▼ For uncompensated Baro-VNAV systems, procedure NA below -12° C or above 51° C.

MISSED APPROACH: Climb to 5400 on track 354° to TUDPY and hold.

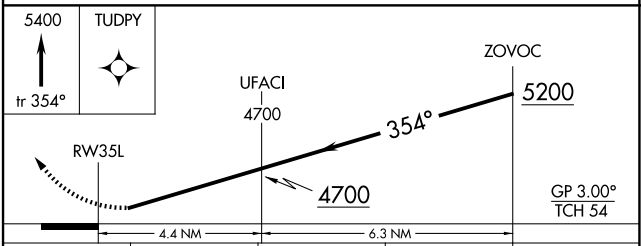
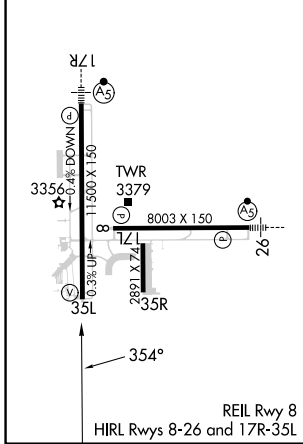
ATIS <b>125.3 270.275</b>	LUBBOCK APP CON <b>119.2 351.8</b>	LUBBOCK TOWER <b>120.5 239.3</b>	GND CON <b>121.9 348.6</b>	CLNC DEL <b>125.8 281.55</b>
------------------------------	---------------------------------------	-------------------------------------	-------------------------------	---------------------------------



Procedure NA for arrivals at RUKTE on V102 southwest bound.



ELEV 3282	<b>D</b>	TDZE 3254
-----------	----------	-----------



CATEGORY	A	B	C	D
RNP 0.18 DA		3559-7/8	305 (300-%)	
RNP 0.30 DA		3620-1 1/8	366 (400-1%)	

**AUTHORIZATION REQUIRED**

SC-2, 20 FEB 2025 to 20 MAR 2025

SC-2, 20 FEB 2025 to 20 MAR 2025