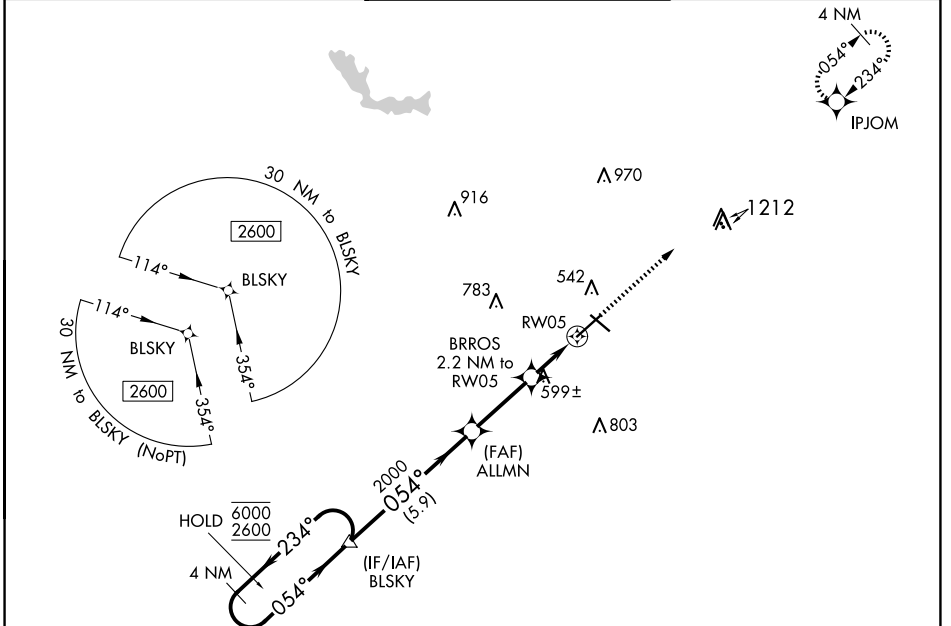


WAAS CH 97315 W05A	APP CRS 054°	Rwy Idg TDZE 344 Apt Elev 354
--	------------------------	---

RNAV (GPS) RWY 5

MIDDLE GEORGIA RGNL (MCN)

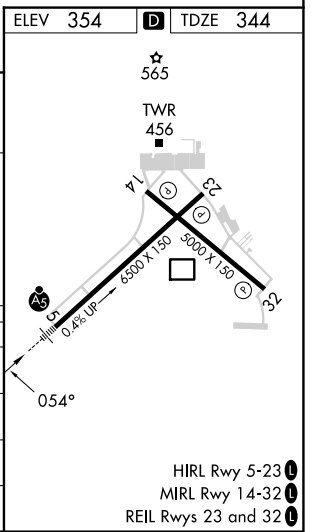
RNP APCH.		MALSR	MISSED APPROACH: Climb to 2600 direct IPJOM and hold.	
For uncompensated Baro-VNAV systems, LNAV/VNAV NA below -8°C or above 54°C.				
ATIS 120.775	ATLANTA APP CON ★ 124.2 279.6	MACON TOWER ★ 128.2 (CTAF) 257.8	GND CON 121.65	UNICOM 122.95



SE-4, 20 FEB 2025 to 20 MAR 2025

SE-4, 20 FEB 2025 to 20 MAR 2025

4 NM Holding Pattern		BLSKY	2600	IPJOM
6000 ← 234°	2600 → 054°	ALLMN	2000	*NNAV only.
GP 3.00°	TCH 56	BRROS	2.2 NM to RW05	
		RW05	*1.5 NM to RW05	
			*1080	
			5.9 NM	
			2.9 NM	
			0.7 NM	
			1.5 NM	
CATEGORY	A	B	C	D
LPV DA	544/24		200 (200-½)	
LNAV/VNAV DA	863-1⅜		519 (600-1⅜)	
LNAV MDA	860/24	516 (600-½)	860/55	516 (600-1)
CIRCLING	900-1	546 (600-1)	920-1½	1120-2½
			566 (600-1½)	766 (800-2½)



HIRL Rwy 5-23

MIRL Rwy 14-32

REIL Rwy 23 and 32