

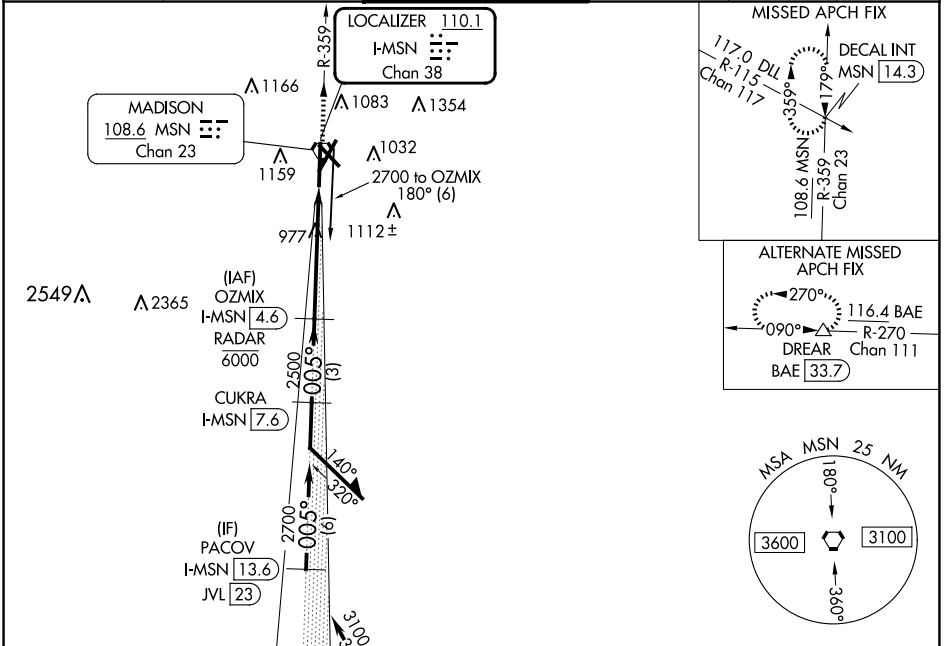
LOC/DME I-MSN <b>110.1</b> Chan <b>38</b>	APP CRS <b>005°</b>	Rwy Idg TDZE Apt Elev	<b>8005</b> <b>862</b> <b>887</b>
---	------------------------	-----------------------------	---

# ILS RWY 36 (CAT II & III)

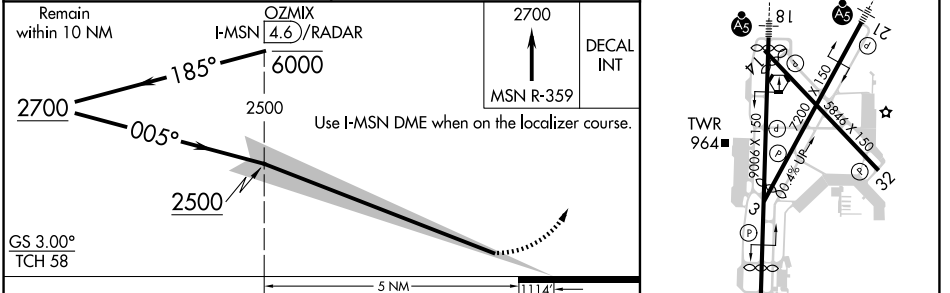
DANE COUNTY RGNL/TRUAX FLD (MSN)

DME or RADAR required.		ALSF-2	MISSED APPROACH: Climb to 2700 on MSN VORTAC R-359 to DECAL INT/MSN 14.3 DME and hold.		
<p>Procedure NA when tower closed. CAT II: RVR 1000 authorized with specific OPSPEC, MSPEC, or LOA approval and use of autoland or HUD to touchdown.</p>					

ATIS <b>124.65 278.3</b>	MADISON APP CON * <b>135.45 343.7</b>	MADISON TOWER * <b>119.3 (CTAF) 0 257.8</b>	GND CON <b>121.9 348.6</b>	CLNC DEL <b>121.625</b>	UNICOM <b>122.95</b>
-----------------------------	--	--	-------------------------------	----------------------------	-------------------------



ELEV 887	TDZE 862
----------	----------



CATEGORY	A	B	C	D
S-ILS 36	CAT II RA 109/12 100 DA 962			
S-ILS 36	CAT III RVR 06			

**CATEGORY II & III ILS - SPECIAL AIRCREW & AIRCRAFT CERTIFICATION REQUIRED**

HIRL all Rwy's  
REIL Rwy's 3, 14 and 32

EC-3, 20 FEB 2025 to 20 MAR 2025

EC-3, 20 FEB 2025 to 20 MAR 2025