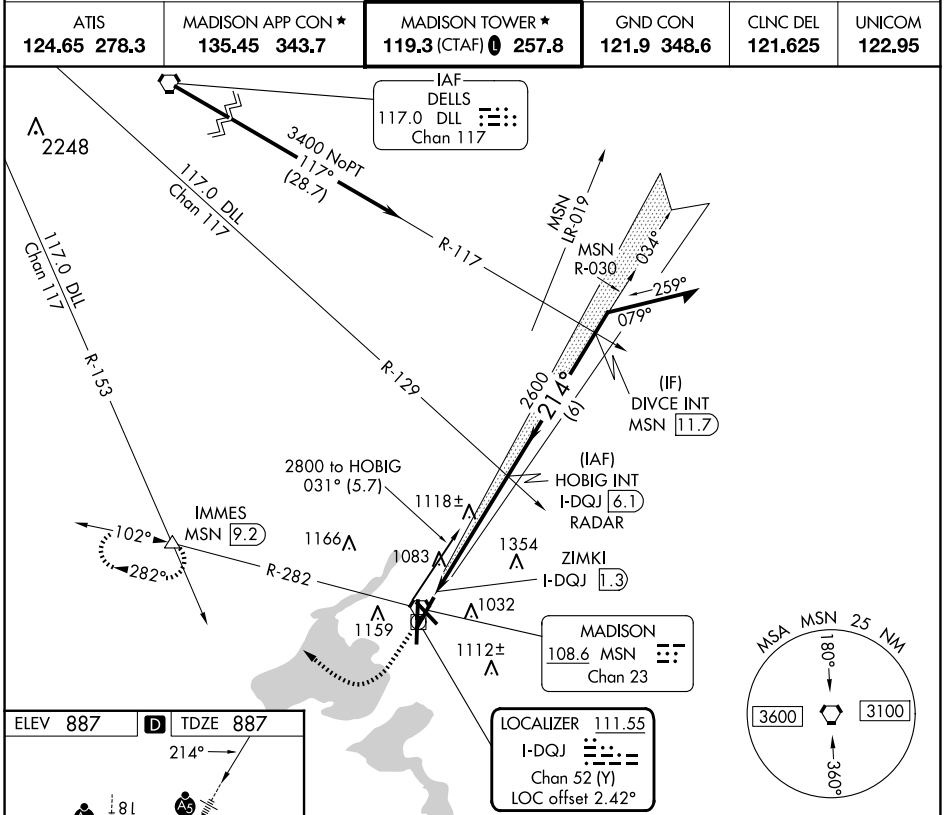


LOC/DME I-DQJ <b>111.55</b> Chan <b>52 (Y)</b>	APP CRS <b>214°</b>	Rwy Idg TDZE Apt Elev	<b>7015</b> <b>887</b> <b>887</b>
--	------------------------	-----------------------------	---

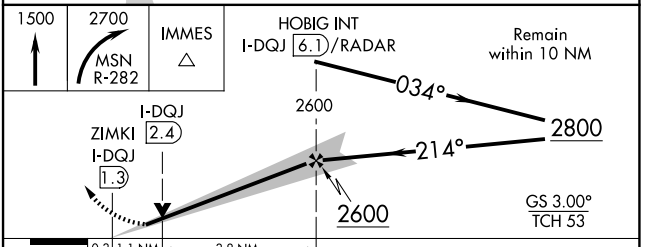
# ILS or LOC RWY 21

DANE COUNTY RGNL/TRUAX FLD (MSN)

<p>For inop ALS, increase S-LOC 21 Cat C/D visibility to 1/8 mile.</p>	<p>MALS R</p>	<p>MISSED APPROACH: Climb to 1500 then climbing right turn to 2700 on MSN VORTAC R-282 to IMMES INT/MSN VORTAC 9.2 DME and hold.</p>			
			<p>ATIS <b>124.65 278.3</b></p>	<p>MADISON APP CON * <b>135.45 343.7</b></p>	<p>MADISON TOWER * <b>119.3 (CTAF) 257.8</b></p>



ELEV 887	<b>D</b> TDZE 887
<p>TWR 964</p> <p>REIL Rws 3, 14 and 32</p> <p>HIRL all Rws</p> <p>FAF to MAP 4.8 NM</p>	
Knots	60 90 120 150 180
Min:Sec	4:48 3:12 2:24 1:55 1:36



CATEGORY	A	B	C	D
S-ILS 21	1137-1/2 250 (300-1/2)			
S-LOC 21	1380-1/2	493 (500-1/2)	1380-1	493 (500-1)
<b>C</b> CIRCLING	1420-1 533 (600-1)	1460-1 573 (600-1)	1460-1 1/2 573 (600-1 1/2)	1700-2 3/4 813 (900-2 3/4)

EC-3, 20 FEB 2025 to 20 MAR 2025

EC-3, 20 FEB 2025 to 20 MAR 2025