

WAAS CH <b>86821</b> <b>W14A</b>	APP CRS <b>139°</b>	Rwy Idg TDZE Apt Elev	<b>5369</b> <b>861</b> <b>887</b>
--	------------------------	-----------------------------	---

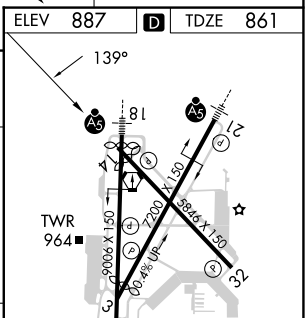
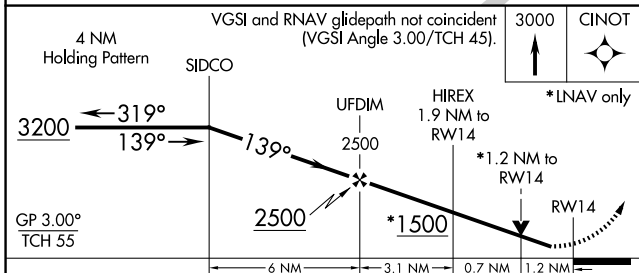
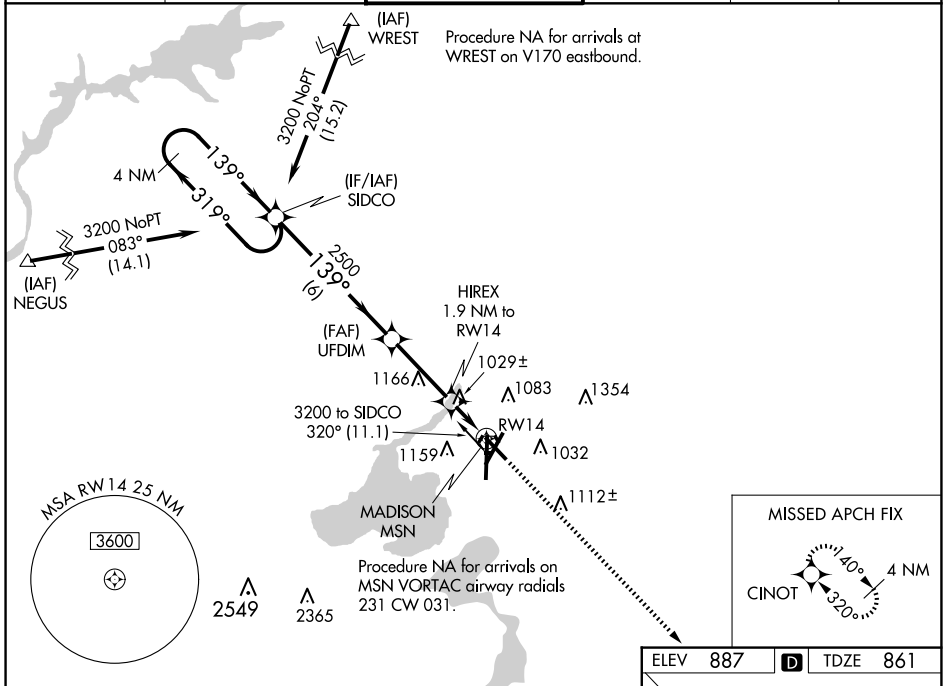
# RNAV (GPS) RWY 14

DANE COUNTY RGNL/TRUAX FLD (MSN)

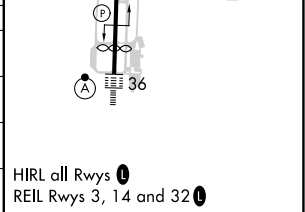
**⚠** For uncompensated Baro-VNAV systems, LNAV/VNAV NA below -19°C (-2°F) or above 54°C (130°F). Helicopter visibility reduction below ¾ SM NA. DME/DME RNP-0.3 NA.

**⚠** MISSED APPROACH: Climb to 3000 direct CINOT and hold.

ATIS <b>124.65 278.3</b>	MADISON APP CON * <b>135.45 343.7</b>	MADISON TOWER * <b>119.3 (CTAF) 0 257.8</b>	GND CON <b>121.9 348.6</b>	CLNC DEL <b>121.625</b>	UNICOM <b>122.95</b>
-----------------------------	--	--	-------------------------------	----------------------------	-------------------------



CATEGORY	A	B	C	D
LPV DA		1111-¾	250 (300-¾)	
LNAV/VNAV DA		1246-1¼	385 (400-1¼)	
LNAV MDA	1280-1	419 (400-1)	1280-1¼	419 (400-1¼)
<b>C</b> CIRCLING	1420-1 533 (600-1)	1460-1 573 (600-1)	1460-1½ 573 (600-1½)	1700-2¾ 813 (900-2¾)



EC-3, 20 FEB 2025 to 20 MAR 2025

EC-3, 20 FEB 2025 to 20 MAR 2025