

VORTAC MSN 108.6 Chan 23	APP CRS 139°	Rwy Idg TDZE Apt Elev 5369 861 887
--	------------------------	--

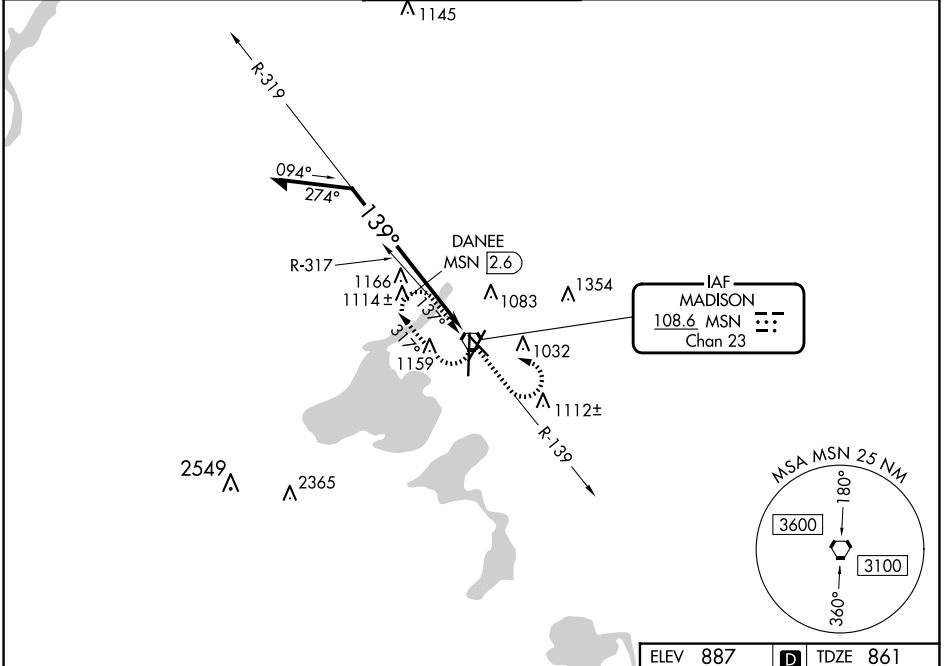
VOR RWY 14

DANE COUNTY RGNL/TRUAX FLD (MSN)

⚠ Rwy 14 helicopter visibility reduction below 3/4 SM NA.

⚠ MISSED APPROACH: Climb to 2800 on MSN VORTAC R-139 then left turn direct MSN VORTAC and hold.

ATIS 124.65 278.3	MADISON APP CON * 135.45 343.7	MADISON TOWER * 119.3 (CTAF) 257.8	GND CON 121.9 348.6	CLNC DEL 121.625	UNICOM 122.95
-----------------------------	--	--	-------------------------------	----------------------------	-------------------------



EC-3, 20 FEB 2025 to 20 MAR 2025

EC-3, 20 FEB 2025 to 20 MAR 2025

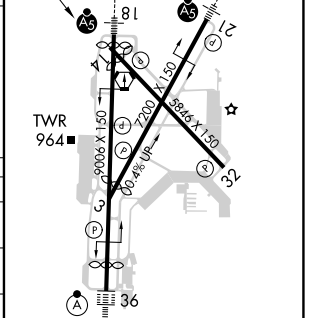
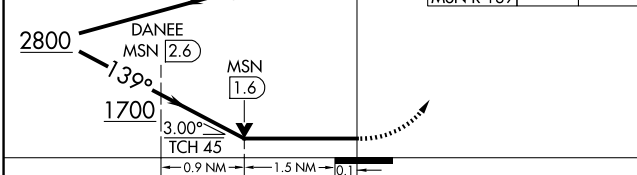
ELEV 887 **D** TDZE 861

2800 MSN R-139 MSN

319° MSN VORTAC

3.00° TCH 45

0.9 NM 1.5 NM 0.1



CATEGORY	A	B	C	D
S-14	1700-1 839 (900-1)	1700-1¼ 839 (900-1¼)	1700-2½	839 (900-2½)
C CIRCLING	1700-1¼	813 (900-1¼)	1700-2½ 813 (900-2½)	1700-2¾ 813 (900-2¾)
DANEE FIX MINIMUMS				
S-14	1380-1	519 (500-1)	1380-1¾	519 (500-1¾)
C CIRCLING	1680-1	793 (800-1)	1680-2¼ 793 (800-2¼)	1680-2½ 793 (800-2½)

HIRL all Rwys **⓪**

REIL Rwy 3, 14 and 32 **⓪**