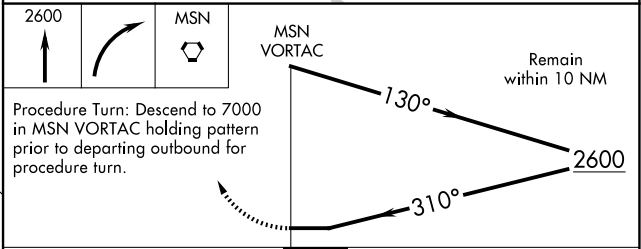
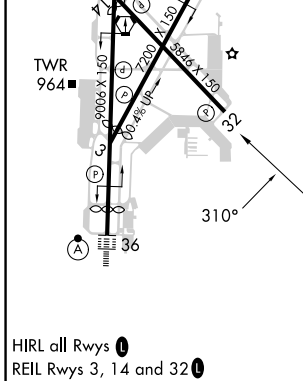
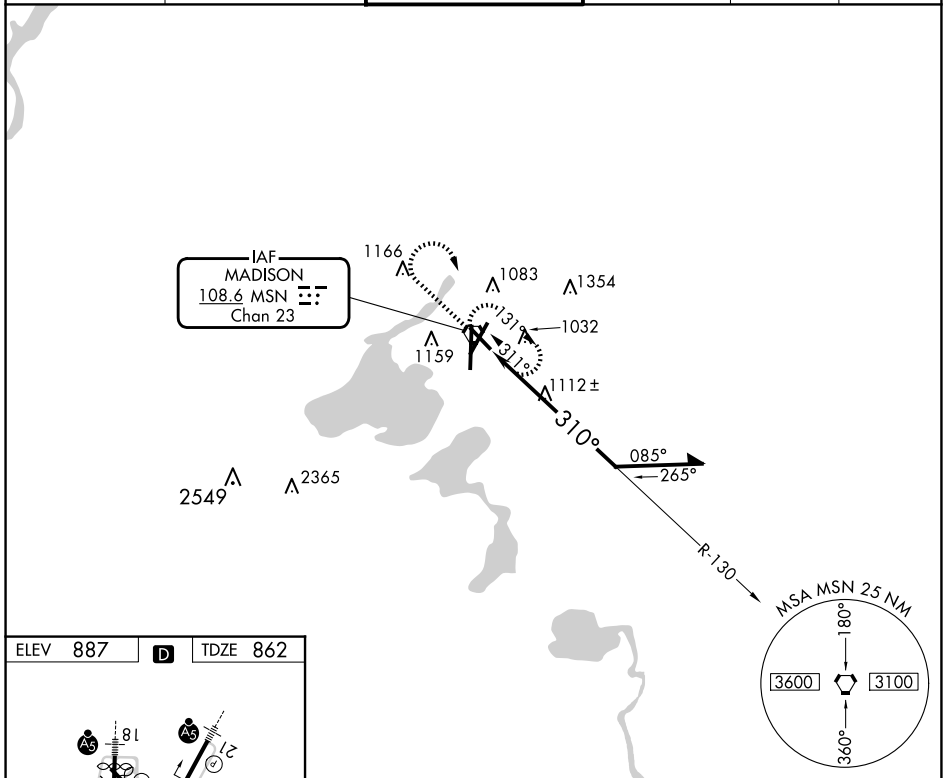


VORTAC MSN <b>108.6</b> Chan <b>23</b>	APP CRS <b>310°</b>	Rwy Idg <b>5846</b> TDZE <b>862</b> Apt Elev <b>887</b>
--	------------------------	---

**VOR RWY 32**  
DANE COUNTY RGNL/TRUAX FLD (MSN)

<p><b>⚠</b> When VGSi inop, Straight-In and Circling Rwy 32 procedures NA at night. Visibility reduction by helicopters NA.</p>		<p>MISSED APPROACH: Climb to 2600 then right turn direct MSN VORTAC and hold.</p>			
ATIS <b>124.65 278.3</b>	MADISON APP CON * <b>135.45 343.7</b>	MADISON TOWER * <b>119.3 (CTAF) 0 257.8</b>	GND CON <b>121.9 348.6</b>	CINC DEL <b>121.625</b>	UNICOM <b>122.95</b>



CATEGORY	A	B	C	D
S-32	1560-1	698 (700-1)	1560-2	698 (700-2)
<b>C</b> CIRCLING	1560-1	673 (700-1)	1560-2 673 (700-2)	1700-2¾ 813 (900-2¾)

EC-3, 20 FEB 2025 to 20 MAR 2025

EC-3, 20 FEB 2025 to 20 MAR 2025