

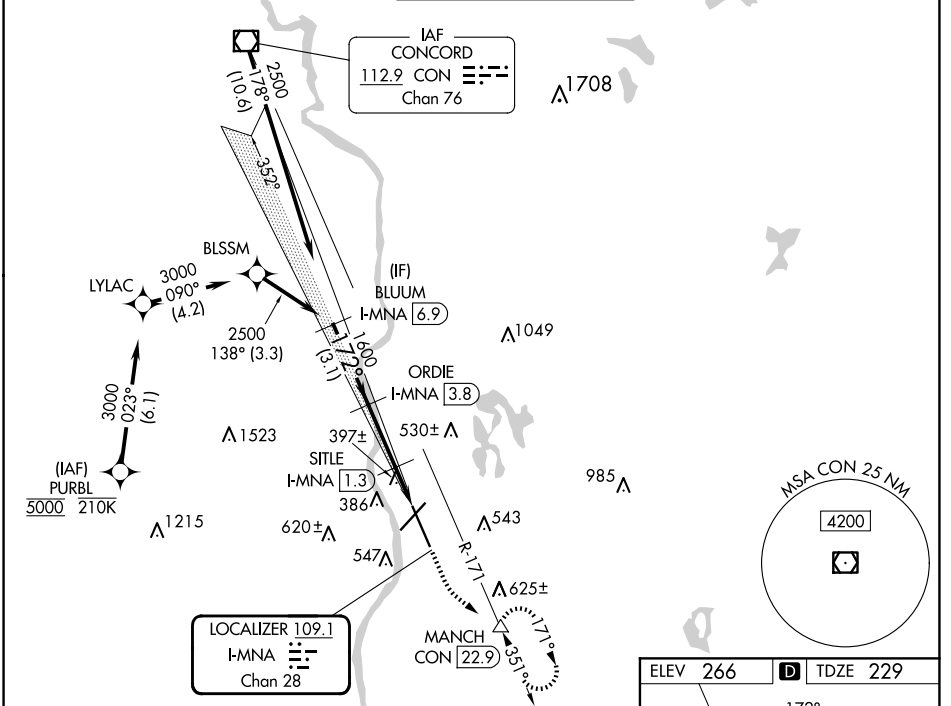
LOC/DME I-MNA 109.1 Chan 28	APP CRS 172°	Rwy ldg 8914 TDZE 229 Apt Elev 266
--	------------------------	---

ILS or LOC RWY 17

MANCHESTER BOSTON RGNL (MHT)

RNP APCH - GPS. From PURBL. DME required.	MALSR 	MISSED APPROACH: Climb to 900 then climbing left turn to 2100 on heading 145° and on CON VOR/DME R-171 to MANCH/CON 22.9 DME and hold, continue climb-in-hold to 2100.
--	-----------	--

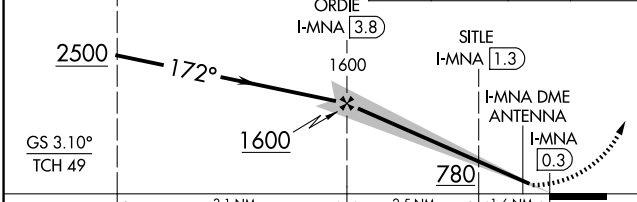
ATIS 119.55	BOSTON APP CON 124.9 269.075	MANCHESTER TOWER 121.3 239.025	GND CON 121.9	CLNC DEL 135.9
-----------------------	--	--	-------------------------	--------------------------



NE-1, 20 FEB 2025 to 20 MAR 2025

NE-1, 20 FEB 2025 to 20 MAR 2025

VGSI and ILS glidepath not coincident (VGSI Angle 3.10/TCH 67).	900	2100	CON R-171	MANCH
BLUUM I-MNA (6.9)		hdg 145°		



CATEGORY	A	B	C	D
S-ILS 17	429/18		200 (200-½)	
S-LOC 17	660/24	431 (400-½)	660/40	431 (400-¾)
CIRCLING	880-1	614 (700-1)	980-2 714 (800-2)	1100-2¾ 834 (900-2¾)

