

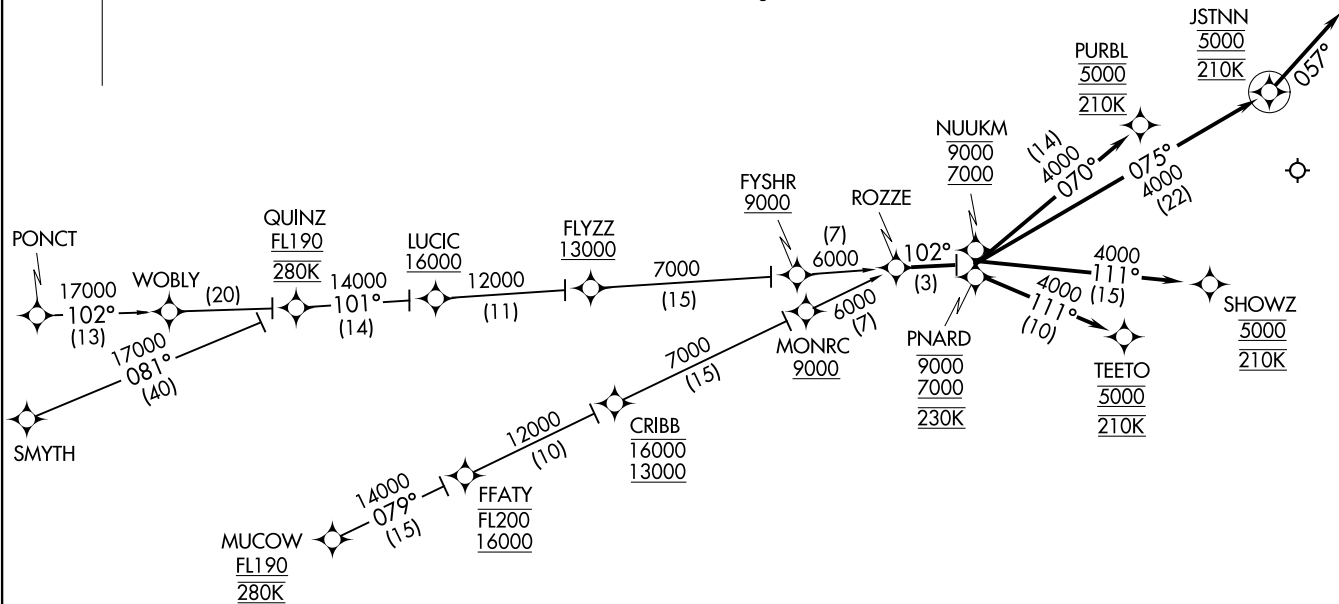
ROZZE TWO ARRIVAL (RNAV)  
(ROZZE,ROZZE2) 17AUG17

MANCHESTER NEW HAMPSHIRE  
MANCHESTER BOSTON RGNL (MHT)



NOTE: RADAR required.  
NOTE: RNAV 1.  
NOTE: DME/DME/IRU or GPS required.  
NOTE: Turbojet aircraft only.  
NOTE: MUCOW and CRIBB transitions are ATC assigned.

BOSTON CENTER  
135.32 360.6  
BOSTON APP CON  
124.9 269.075  
ATIS  
119.55  
MANCHESTER TOWER  
121.3 239.025



NOTE: Chart not to scale.

(NARRATIVE ON FOLLOWING PAGE)

(ROZZE,ROZZE2) 21280  
ROZZE TWO ARRIVAL (RNAV)

AL-246 (FAA)

MANCHESTER BOSTON RGNL (MHT)  
MANCHESTER, NEW HAMPSHIRE

ARRIVAL ROUTE DESCRIPTION

- CRIBB TRANSITION (CRIBB.ROZZE2)
- MUCOW TRANSITION (MUCOW.ROZZE2)
- PONCT TRANSITION (PONCT.ROZZE2)
- QUINZ TRANSITION (QUINZ.ROZZE2)
- SMYTH TRANSITION (SMYTH.ROZZE2)

Landing Rwy 6: From ROZZE on track 102° to cross PNARD between 7000 and 9000 and at 230K, then on track 111° to cross TEETO at 5000 and at 210K. Expect ILS or LOC Rwy 6 or radar vectors to final approach course.

Landing Rwy 17: From ROZZE on track 102° to cross NUUKM between 7000 and 9000, then on track 070° to cross PURBL at 5000 and at 210K. Expect RNP approach or ILS or LOC/DME Rwy 17 or radar vectors to final approach course.

Landing Rwy 24: From ROZZE on track 102° to cross NUUKM between 7000 and 9000, then on track 075° to cross JSTNN at 5000 and at 210K, then on heading 057°. Expect radar vectors to final approach course.

Landing Rwy 35: From ROZZE on track 102° to cross NUUKM between 7000 and 9000, then on track 111° to cross SHOWZ at 5000 and at 210K. Expect RNP approach or ILS or LOC Rwy 35 or radar vectors to final approach course.

NE-1, 20 FEB 2025 to 20 MAR 2025

NE-1, 20 FEB 2025 to 20 MAR 2025