

APP CRS	Rwy Idg	7650
352°	TDZE	265
	Apf Elev	266

RNAV (RNP) Z RWY 35

MANCHESTER BOSTON RGNL (MHT)

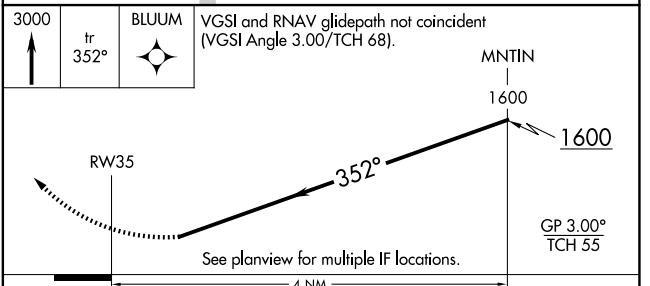
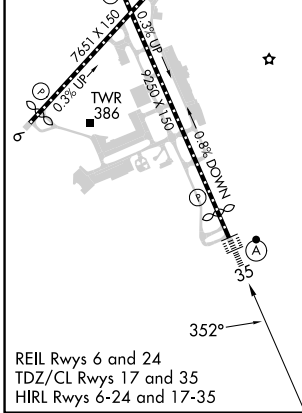
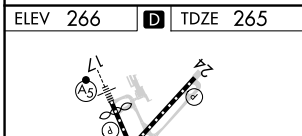
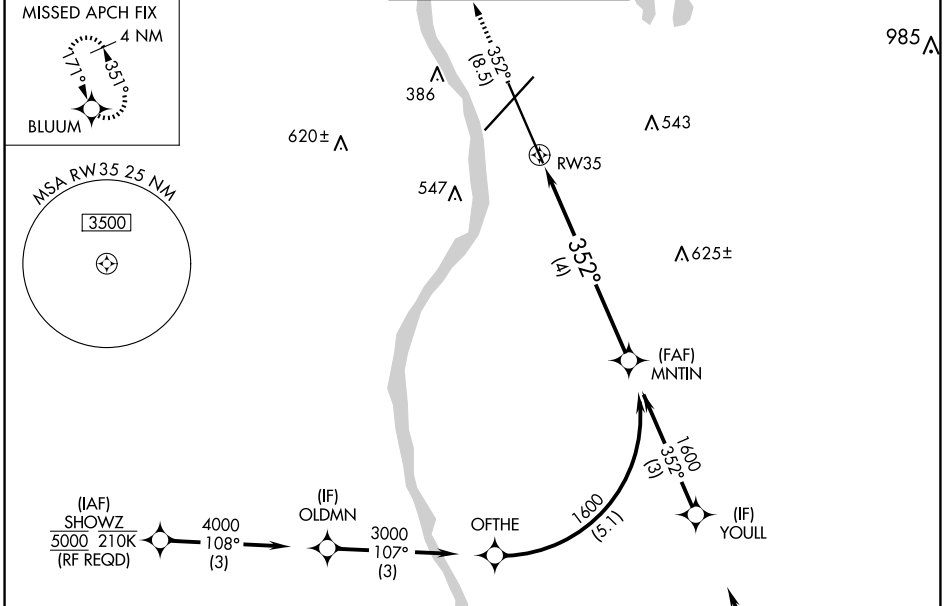
▼ For uncompensated Baro-VNAV systems, procedure NA below -18°C (0°F) or above 54°C (130°F). GPS required. When local altimeter not received, procedure NA. For inop ALSF-2, increase RNP 0.20 all Cats visibility to 1½ SM and RNP 0.30 all Cats visibility to 1¾ SM.

ALFS-2



MISSED APPROACH: Climb to 3000 on track 352° to BLUUM and hold, continue climb-in-hold to 3000.

ATIS 119.55	BOSTON APP CON 124.9 269.075	MANCHESTER TOWER 121.3 239.025	GND CON 121.9	CLNC DEL 135.9
-----------------------	--	--	-------------------------	--------------------------



CATEGORY	A	B	C	D
RNP 0.20 DA		755/60	490 (500-1½)	
RNP 0.30 DA		802-1¾	537 (600-1¾)	

AUTHORIZATION REQUIRED

NE-1, 20 FEB 2025 to 20 MAR 2025

NE-1, 20 FEB 2025 to 20 MAR 2025