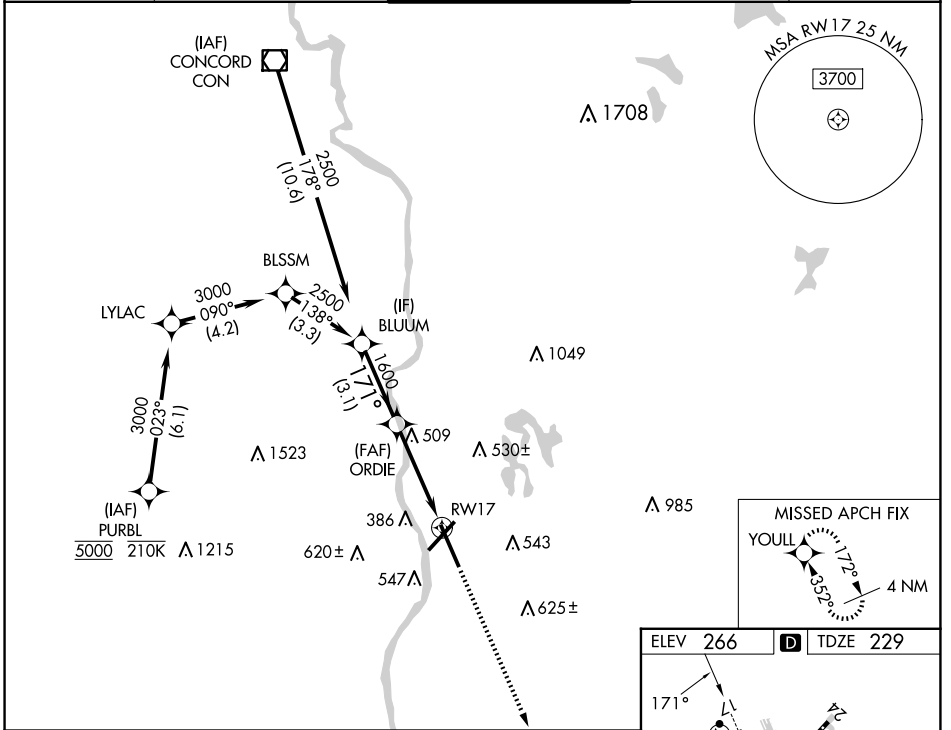


WAAS CH 93807	APP CRS 171°	Rwy Idg 8914 TDZE 229 Apt Elev 266
W17A		

RNAV (GPS) Y RWY 17

MANCHESTER BOSTON RGNL (MHT)

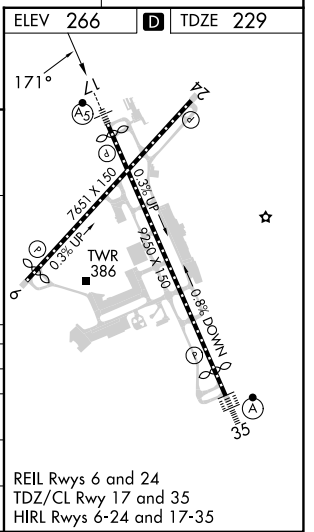
RNP APCH-GPS.		MALSR		MISSED APPROACH: Climb to 2000 direct YOULL and hold.	
<p>▼ For uncompensated Baro-VNAV systems, LNAV/VNAV NA below -19°C or above 54°C. ▲ For inop ALS, increase LNAV CAT A/B visibility to RVR 5500.</p>					
ATIS 119.55	BOSTON APP CON 124.9 269.075	MANCHESTER TOWER 121.3 239.025		GND CON 121.9	CLNC DEL 135.9



NE-1, 20 FEB 2025 to 20 MAR 2025

NE-1, 20 FEB 2025 to 20 MAR 2025

BLUUM		VGSi and RNAV glidepath not coincident (VGSi Angle 3.10/TCH 67).		2000	YOULL
2500	171°	1600	1.4 NM to RWY 17		
GP 3.10°					
TCH 49					
	3.1 NM	2.7 NM	1.4 NM		
CATEGORY	A	B	C	D	
LPV DA		429/18	200 (200-½)		
LNAV/VNAV DA		760/55	531 (500-1)		
LNAV MDA	760/24	531 (500-½)	760/55	531 (500-1)	
CIRCLING	880-1	614 (700-1)	980-2 714 (800-2)	1100-2¾ 834 (900-2¾)	



REIL Rwy 6 and 24
TDZ/CL Rwy 17 and 35
HIRL Rwy 6-24 and 17-35