

| | | | |
|--|------------------------|-----------------------------|---|
| WAAS CH 70438 W18A | APP CRS 182° | Rwy Idg TDZE Apt Elev | 6001 110 110 |
|--|------------------------|-----------------------------|---|

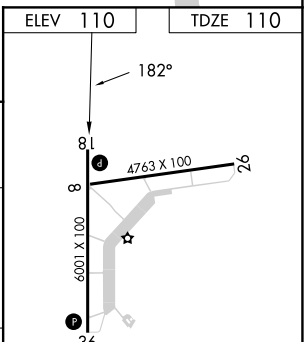
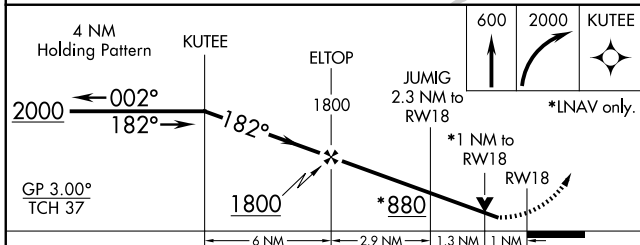
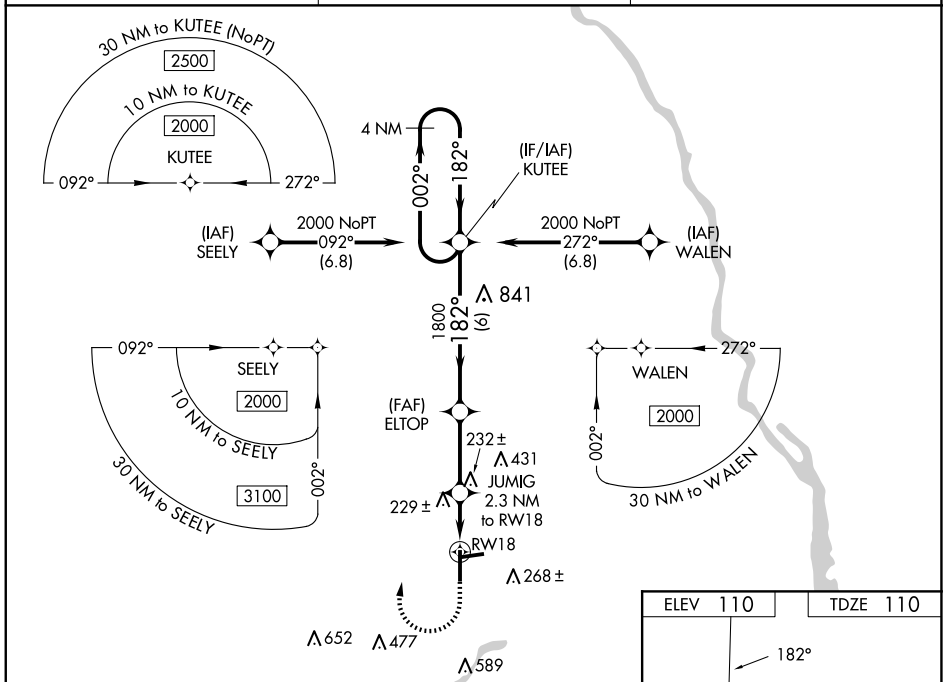
RNAV (GPS) RWY 18

MARIANNA MUNI (MAI)

⚠ Night landing: Rwy 26 NA. For uncompensated Baro-VNAV systems, LNAV/VNAV NA below -5°C (23°F) or above 54°C (130°F). Baro-VNAV and VDP NA when using Bainbridge altimeter setting. DME/DME RNP-0.3 NA. Helicopter visibility reduction below ¾ SM NA. When local altimeter setting not received, use Bainbridge altimeter setting and increase all DA 72 feet and all MDA 80 feet; increase LPV and LNAV/VNAV all Cats and Circling Cat D visibility ¼ mile and LNAV Cats C/D visibility ⅓ mile.

MISSED APPROACH:
Climb to 600 then climbing right turn to 2000 direct KUTEE and hold.

| | | |
|------------------------|--|---------------------------------|
| ASOS 133.525 | CAIRNS APP CON ★ 133.75 270.35 | UNICOM 123.0 (CTAF) 0 |
|------------------------|--|---------------------------------|



| CATEGORY | A | B | C | D |
|-------------------|-------|-------------|------------------------|------------------------|
| LPV DA | | 360-7/8 | 250 (300-7/8) | |
| LNAV/VNAV DA | | 500-13/8 | 390 (400-13/8) | |
| LNAV MDA | | 480-1 | 370 (400-1) | |
| C CIRCLING | 620-1 | 510 (600-1) | 620-1½ 510 (600-1½) | 900-2½ 790 (800-2½) |

MIRL Rwy 18-36 0

SE-3, 20 FEB 2025 to 20 MAR 2025

SE-3, 20 FEB 2025 to 20 MAR 2025