

MARIANNA, FLORIDA

AL-248 (FAA)

23166

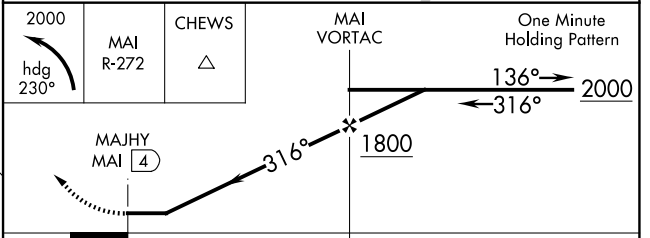
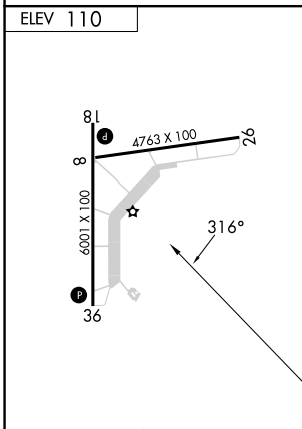
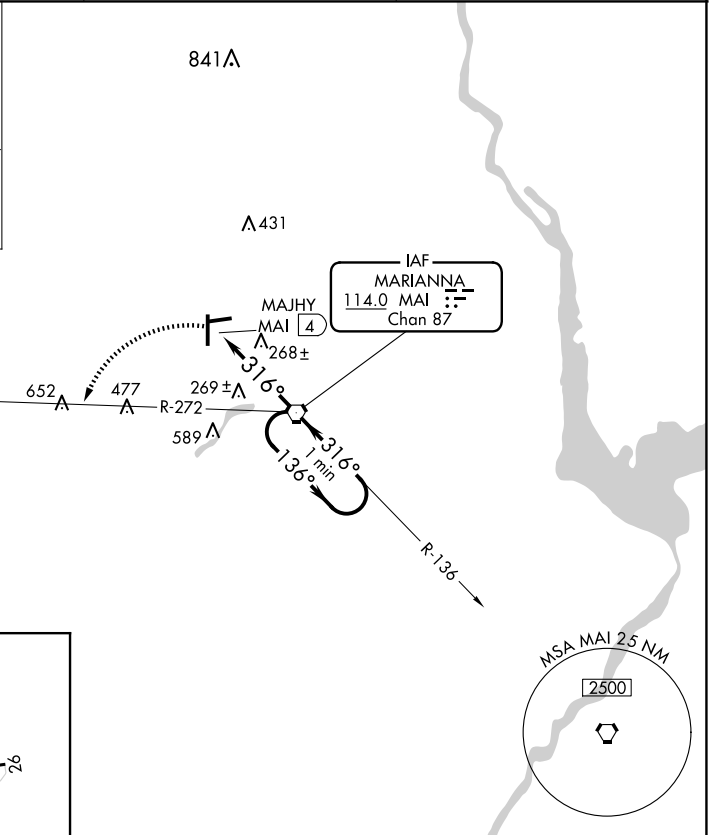
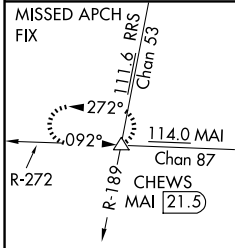
VORTAC MAI <b>114.0</b> Chan <b>87</b>	APP CRS <b>316°</b>	Rwy ldg TDZE Apt Elev <b>N/A</b> <b>N/A</b> <b>110</b>
--	------------------------	---

**VOR-A**  
MARIANNA MUNI (MAI)

**⚠** Helicopter visibility reduction below 1 SM NA. When local altimeter setting not received, use Bainbridge altimeter setting; Increase all MDA 80 feet and Circling Cat D visibility ¼ SM. Circling Rwy 26 NA at night.

**MISSED APPROACH:** Climbing left turn to 2000 via heading 230° and MAI R-272 to CHEWS INT/MAI 21.5 DME and hold.

ASOS <b>133.525</b>	CAIRNS APP CON ★ <b>133.75 270.35</b>	UNICOM <b>123.0 (CTAF) 0</b>
------------------------	--	---------------------------------



MIRL Rwy 18-36 0

FAF to MAP 4 NM					
Knots	60	90	120	150	180
Min:Sec	4:00	2:40	2:00	1:36	1:20

CATEGORY	A	B	C	D
<b>CIRCLING</b>	620-1	510 (600-1)	620-1½ 510 (600-1½)	900-2½ 790 (800-2½)

MARIANNA, FLORIDA  
Amdt 12B 23APR20

30°50'N-85°11'W

MARIANNA MUNI (MAI)  
**VOR-A**

SE-3, 20 FEB 2025 to 20 MAR 2025

SE-3, 20 FEB 2025 to 20 MAR 2025