

LOC I-CID <b>109.3</b>	APP CRS <b>089°</b>	Rwy Idg TDZE Apt Elev	<b>8175</b> <b>857</b> <b>869</b>
---------------------------	------------------------	-----------------------------	---

# ILS or LOC RWY 9

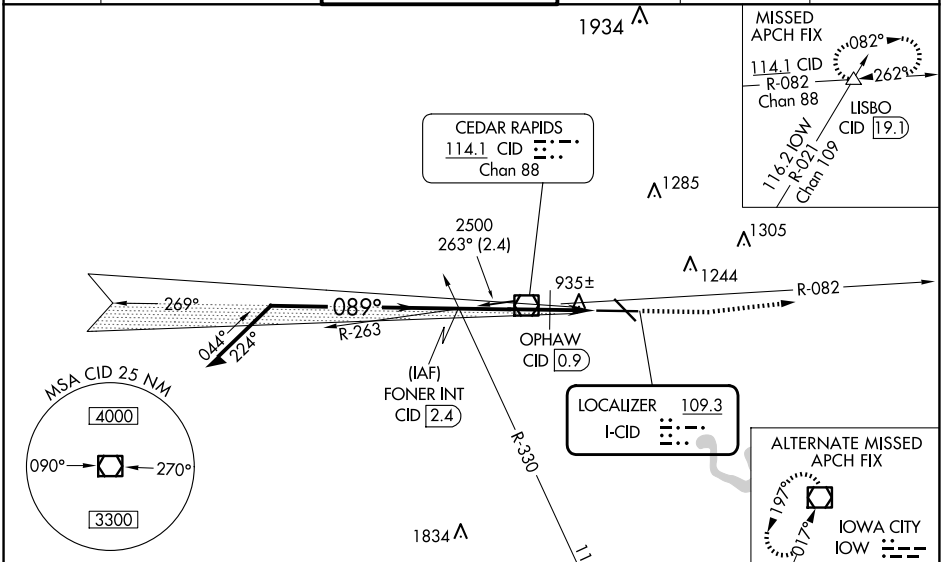
THE EASTERN IOWA (CID)

**⚠** When local altimeter setting not received, use Iowa City altimeter setting and increase all DA 64 feet and all MDA 80 feet; increase S-LOC Cat D visibility to RVR 6000. OPHAW fix minimums: increase S-LOC Cat C visibility to RVR 4000 and Cat D to RVR 6000. When using Iowa City altimeter setting, for inop MALSR, increase S-ILS 9 all Cats visibility to RVR 5000. Autopilot coupled approach NA below 1100 MSL.  
# RVR 1800 authorized with use of FD or HUD to DA (NA when using Iowa City altimeter setting).

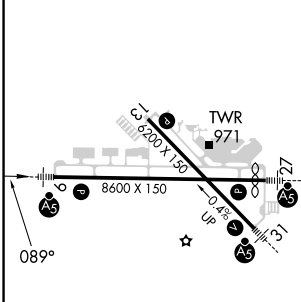
**MALSR**

**MISSED APPROACH:** Climb to 1400 then climb to 2700 via CID VOR/DME R-082 to LISBO/CID VOR/DME 19.1 DME and hold.

ATIS <b>124.15</b>	CEDAR RAPIDS APP CON* <b>119.7 266.8</b>	CEDAR RAPIDS TOWER* <b>118.7 (CTAF) 266.8</b>	GND CON <b>121.6</b>	CLNC DEL <b>125.45</b>	UNICOM <b>122.95</b>
-----------------------	---	--	-------------------------	---------------------------	-------------------------



ELEV 869	<b>D</b>	TDZE 857
----------	----------	----------



\* 1440 when using Iowa City altimeter setting.

Remain within 10 NM

2500 089° 2500

FONER INT CID 2.4

CID VOR/DME

OPHAW CID 0.9

\* 1360

1400 2700 LISBO Δ

↑ CID R-082

\* LOC only

CID 2.5

GS 3.00° TCH 49 VGSi and ILS glidepath not coincident (VGSi Angle 3.00/TCH 60).

3.3 NM 1.7 NM

CATEGORY	A	B	C	D
S-ILS 9#	1057/24 200 (200-½)			
S-LOC 9	1360/24 503 (500-½)		1360/50 503 (500-1)	
OPHAW FIX MINIMUMS				
S-LOC 9	1220/24 363 (400-½)		1220/40 363 (400-¾)	

FAF to MAP 5 NM					
Knots	60	90	120	150	180
Min:Sec	5:00	3:20	2:30	2:00	1:40

CEDAR RAPIDS, IOWA  
Amdt 18E 07NOV19

41°53'N-91°43'W

# THE EASTERN IOWA (CID)

## ILS or LOC RWY 9

NC-3, 20 FEB 2025 to 20 MAR 2025

NC-3, 20 FEB 2025 to 20 MAR 2025