

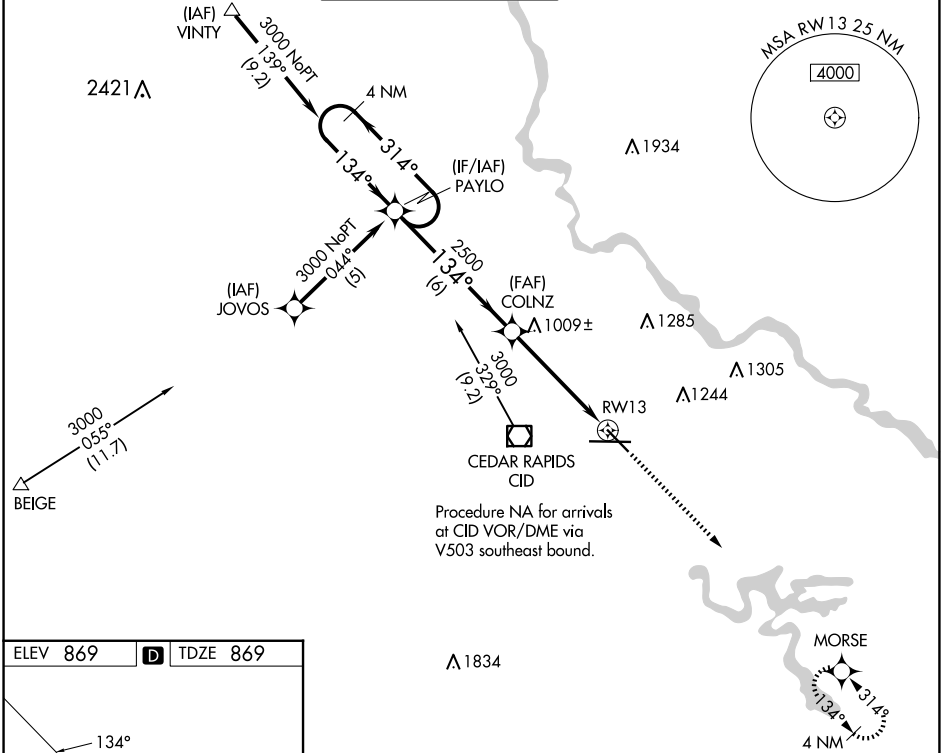
WAAS CH 86201 W13A	APP CRS 134°	Rwy ldg TDZE Apt Elev	6200 869 869
----------------------------------------	------------------------	-----------------------------	-----------------------------------------

RNAV (GPS) RWY 13

THE EASTERN IOWA (CID)

RNP APCH.		MISSED APPROACH: Climb to 3000 direct MORSE and hold.			
Baro-VNAV NA below -16°C (4°F).					

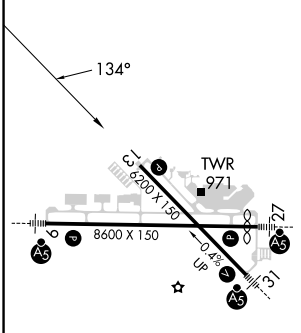
ATIS 124.15	CEDAR RAPIDS APP CON * 119.7 266.8	CEDAR RAPIDS TOWER * 118.7 (CTAF) 266.8	GND CON 121.6	CLNC DEL 125.45	UNICOM 122.95
-----------------------	----------------------------------------------	---------------------------------------------------	-------------------------	---------------------------	-------------------------



NC-3, 20 FEB 2025 to 20 MAR 2025

NC-3, 20 FEB 2025 to 20 MAR 2025

ELEV 869	D	TDZE 869
----------	----------	----------



4 NM Holding Pattern	PAYLO	COLNZ	3000	MORSE
VGSI and descent angles not coincident (VGSI Angle 3.00/TCH 51).				
*LNNAV only.				
*1 NM to RW13				
RW13				
6 NM				
3.9 NM				
1 NM				

CATEGORY	A	B	C	D
LPV DA	1120-1 251 (300-1)			
LNNAV/VNAV DA	1200-1¼ 331 (400-1¼)			
LNNAV MDA	1260-1 391 (400-1)			1260-1¼ 391 (400-1¼)

MIRL Rwy 13-31 **1**

HIRL Rwy 9-27 **1**

REIL Rwy 13