

WAAS CH <b>77603</b> <b>W09A</b>	APP CRS <b>089°</b>	Rwy Idg TDZE Apt Elev	<b>8175</b> <b>857</b> <b>869</b>
--	------------------------	-----------------------------	---

# RNAV (GPS) RWY 9

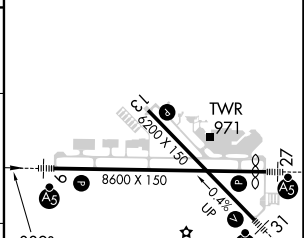
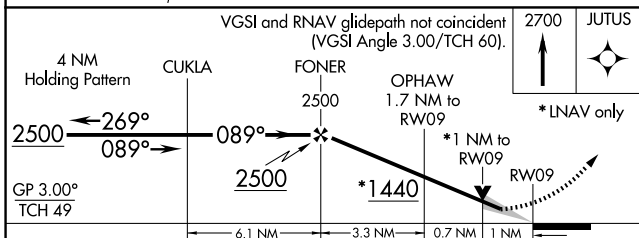
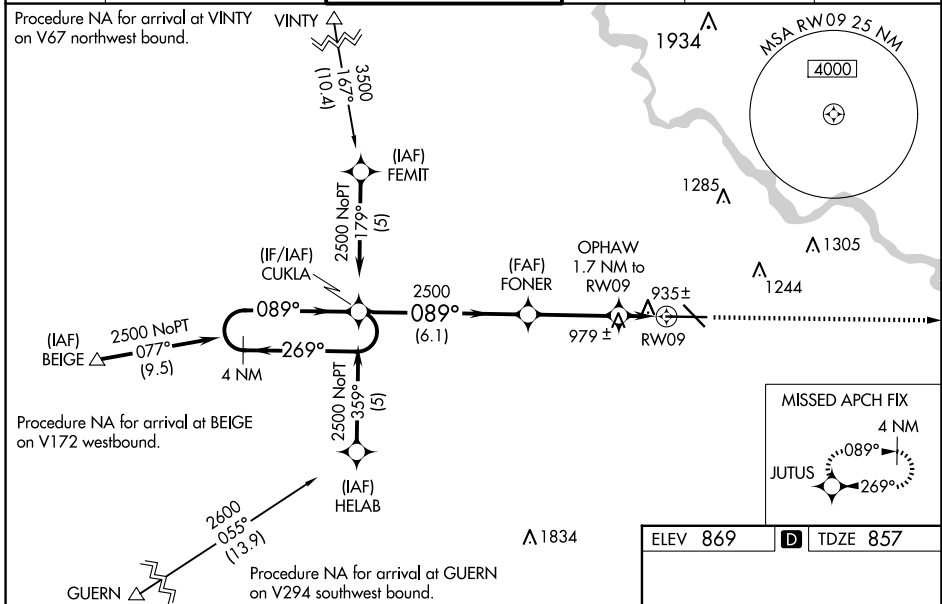
THE EASTERN IOWA (CID)

**⚠** Baro-VNAV NA when using Iowa City altimeter setting. For uncompensated Baro-VNAV systems, LNAV/VNAV NA below -16°C (4°F) or above 47°C (116°F). DME/DME RNP-0.3 NA. When local altimeter setting not received use Iowa City altimeter setting: increase LPV DA to 1121 feet; increase LNAV/VNAV DA to 1268 feet and all visibilities to RVR 5000; increase all MDA 80 feet, LNAV Cat C visibility to RVR 4000, and Circling Cat C and D visibility ¼ SM. For inop MALSRS increase LNAV Cat D visibility to RVR 6000. VDP NA with Iowa City altimeter setting. When using Iowa City altimeter setting; for inoperative MALSRS, increase LPV all Cats visibility to RVR 5000, LNAV Cat C visibility to RVR 6000 and LNAV Cat D visibility to 1½ miles.  
# RVR 1800 authorized with use of FD or AP or HUD to DA, NA when using Iowa City altimeter setting.

**MALSRS**

**MISSED APPROACH:**  
Climb to 2700 direct JUTUS and hold.

ATIS <b>124.15</b>	CEDAR RAPIDS APP CON * <b>119.7 266.8</b>	CEDAR RAPIDS TOWER * <b>118.7 (CTAF) 0 266.8</b>	GND CON <b>121.6</b>	CLNC DEL <b>125.45</b>	UNICOM <b>122.95</b>
-----------------------	--	---	-------------------------	---------------------------	-------------------------



CATEGORY	A	B	C	D
LPV DA#	1057/24 200 (200-½)			
LNAV/VNAV DA	1204/40 347 (400-¾)			
LNAV MDA	1240/24	383 (400-½)	1240/50 383(400-1)	
CIRCLING	1280-1 411 (500-1)	1320-1 451 (500-1)	1560-2 691 (700-2)	1560-2¼ 691 (700-2¼)

MIRL Rwy 13-31  
HIRL Rwy 9-27  
REIL Rwy 13

NC-3, 20 FEB 2025 to 20 MAR 2025

NC-3, 20 FEB 2025 to 20 MAR 2025