

WAAS CH 65601 W09A	APP CRS 094°	Rwy Idg TDZE Apt Elev	6000 33 33
--	------------------------	-----------------------------	---------------------------------------

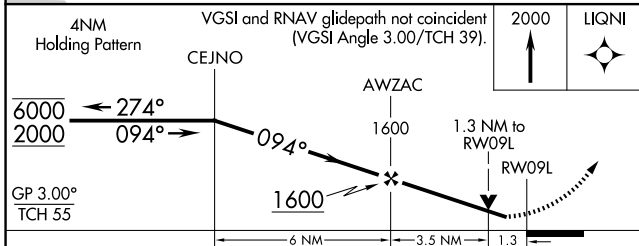
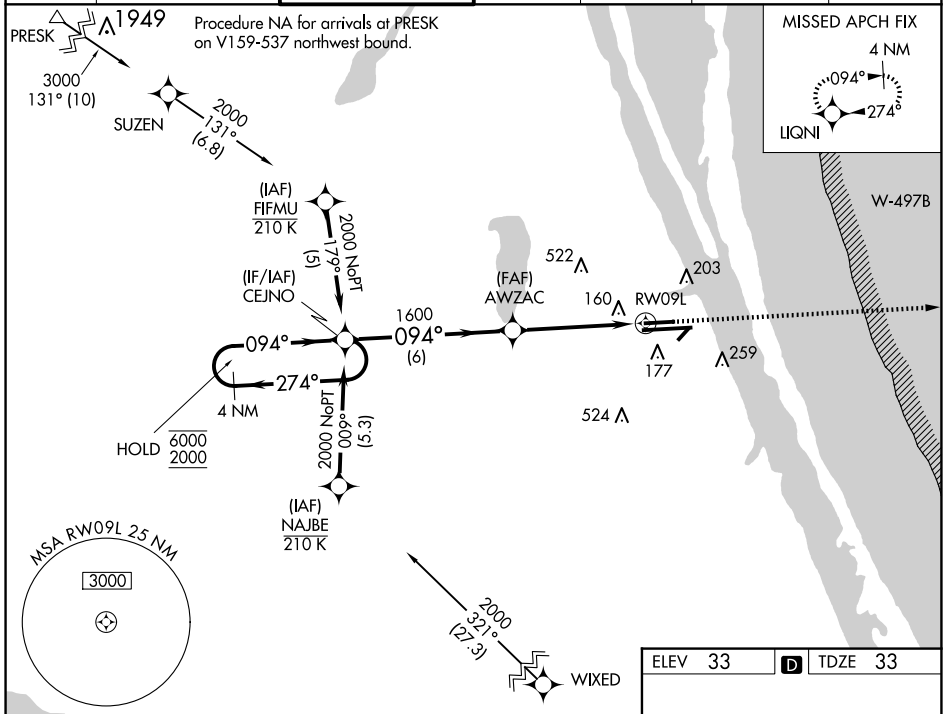
RNAV (GPS) RWY 9L

MELBOURNE ORLANDO INTL (MLB)

RNP APCH - GPS.
 For uncompensated Baro-VNAV systems, LNAV/VNAV NA below 2°C or above 54°C. Rwy 9L helicopter visibility reduction below 3/4 SM NA.

MISSED APPROACH: Climb to 2000 direct LIQNI and hold.

ATIS 132.55	ORLANDO APP CON 132.65 281.425	MELBOURNE TOWER ★ 118.2 (CTAF) 257.8	GND CON 121.9	CLNC DEL 121.9	CLNC DEL 132.65 (When twr closed)	UNICOM 122.95
-----------------------	--	---	-------------------------	--------------------------	--	-------------------------



ELEV 33	TDZE 33
---------	---------

REIL Rwy 27L
 HIRL Rwy 9R-27L
 MIRL Rwys 5-23 and 9L-27R
 TDZ/CL Rwy 9R

SE-3, 20 FEB 2025 to 20 MAR 2025

SE-3, 20 FEB 2025 to 20 MAR 2025