

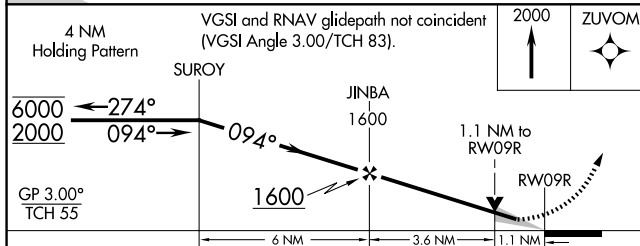
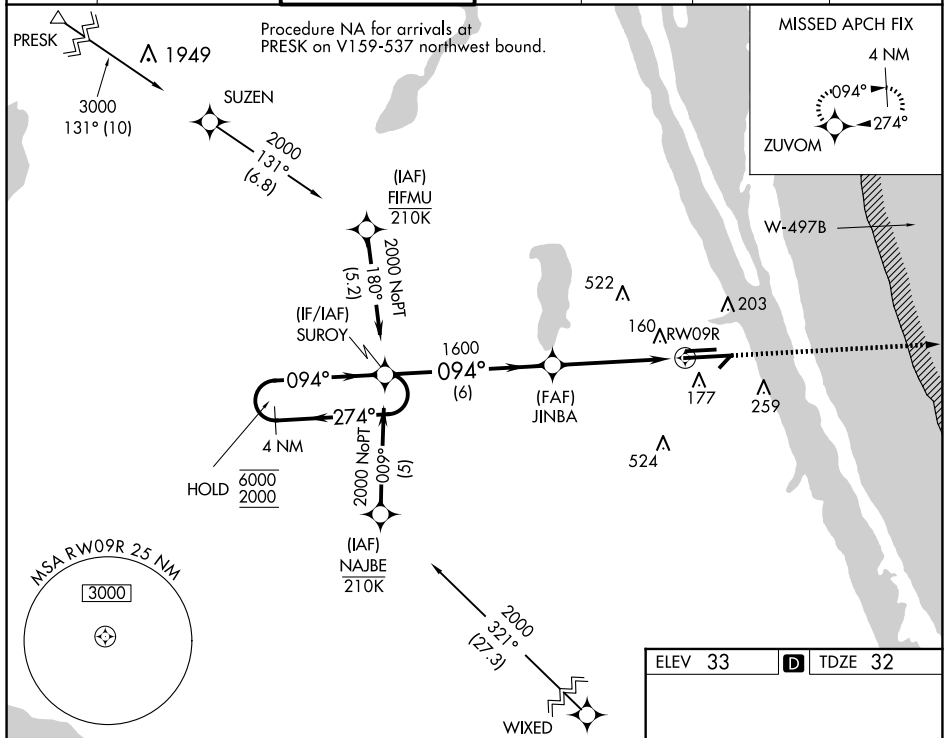
WAAS CH <b>60901</b> <b>W09B</b>	APP CRS <b>094°</b>	Rwy Idg <b>10181</b> TDZE <b>32</b> Apt Elev <b>33</b>
--	------------------------	--

# RNAV (GPS) RWY 9R

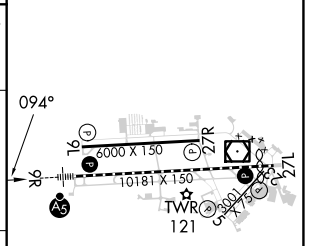
MELBOURNE ORLANDO INTL (MLB)

RNP APCH - GPS.		MALSR	MISSED APPROACH: Climb to 2000 direct ZUVOM and hold.
For uncompensated Baro-VNAV systems, LNAV/VNAV NA below 2°C or above 54°C.			

ATIS <b>132.55</b>	ORLANDO APP CON <b>132.65 281.425</b>	MELBOURNE TOWER * <b>118.2</b> (CTAF) <b>257.8</b>	GND CON <b>121.9</b>	CLNC DEL <b>121.9</b>	CLNC DEL <b>132.65</b> (When twr closed)	UNICOM <b>122.95</b>
-----------------------	--	---	-------------------------	--------------------------	--	-------------------------



ELEV 33	TDZE 32
---------	---------



CATEGORY	A	B	C	D
LPV DA	232/18		200 (200-1/2)	
LNAV/VNAV DA	427/35		395 (400-5/8)	
LNAV MDA	480/24	448 (500-1/2)	480/45	448 (500-7/8)
CIRCLING	500-1 467 (500-1)	560-1 527 (600-1)	680-1 3/4 647 (700-1 3/4)	880-2 3/4 847 (900-2 3/4)

REIL Rwy 27L

HIRL Rwy 9R-27L

MIRL Rwys 5-23 and 9L-27R

TDZ/CL Rwy 9R

SE-3, 20 FEB 2025 to 20 MAR 2025

SE-3, 20 FEB 2025 to 20 MAR 2025