

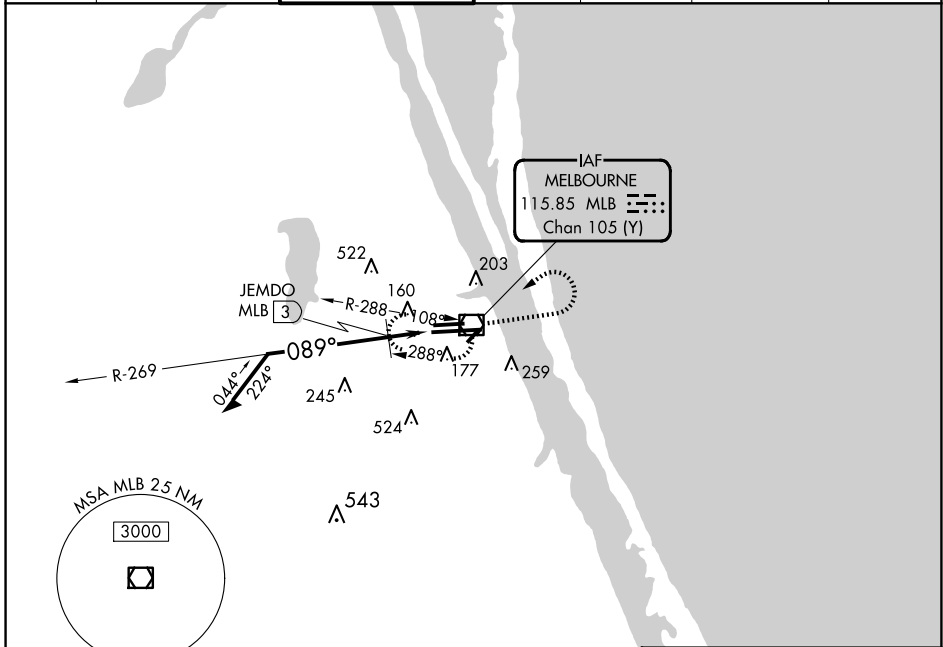
VOR/DME MLB	APP CRS	Rwy Idg	<b>10181</b>
<b>115.85</b>	<b>089°</b>	TDZE	<b>32</b>
Chan <b>105 (Y)</b>		Apt Elev	<b>33</b>

# VOR RWY 9R

MELBOURNE ORLANDO INTL (MLB)

<p><b>▼</b> JEMDO FIX minimums: For inop MALSRL, <b>▲</b> increase S-9R Cats C and D visibility to RVR 6000.</p>	<p>MALSRL</p>	<p>MISSED APPROACH: Climb to 1000, then climbing left turn to 2100 direct MLB VOR/DME and hold, continue climb-in-hold to 2100.</p>
--	---------------	---

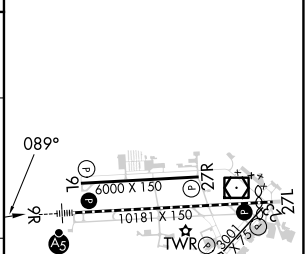
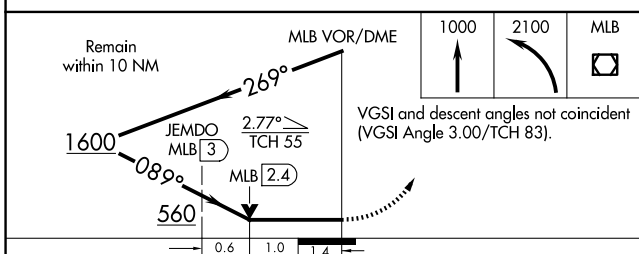
ATIS <b>132.55</b>	ORLANDO APP CON <b>132.65 281.425</b>	MELBOURNE TOWER ★ <b>118.2 (CTAF) 257.8</b>	GND CON <b>121.9</b>	CLNC DEL <b>121.9</b>	CLNC DEL <b>132.65</b> (When twr closed)	UNICOM <b>122.95</b>
-----------------------	--	--	-------------------------	--------------------------	--	-------------------------



SE-3, 20 FEB 2025 to 20 MAR 2025

SE-3, 20 FEB 2025 to 20 MAR 2025

ELEV 33	D	TDZE 32
---------	---	---------



CATEGORY	A	B	C	D
S-9R	560/24	528 (600-½)	560/55	528 (600-1)
<b>C</b> CIRCLING	560-1	527 (600-1)	680-1¾ 647 (700-1¾)	880-2¾ 847 (900-2¾)
JEMDO FIX MINIMUMS				
S-9R	440/24	408 (500-½)	440/40	408 (500-¾)
<b>C</b> CIRCLING	560-1	527 (600-1)	680-1¾ 647 (700-1¾)	880-2¾ 847 (900-2¾)

REIL Rwy 27L **0**  
 HIRL Rwy 9R-27L **0**  
 MIRL Rws 5-23 and 9L-27R **0**  
 TDZ/CL Rwy 9R