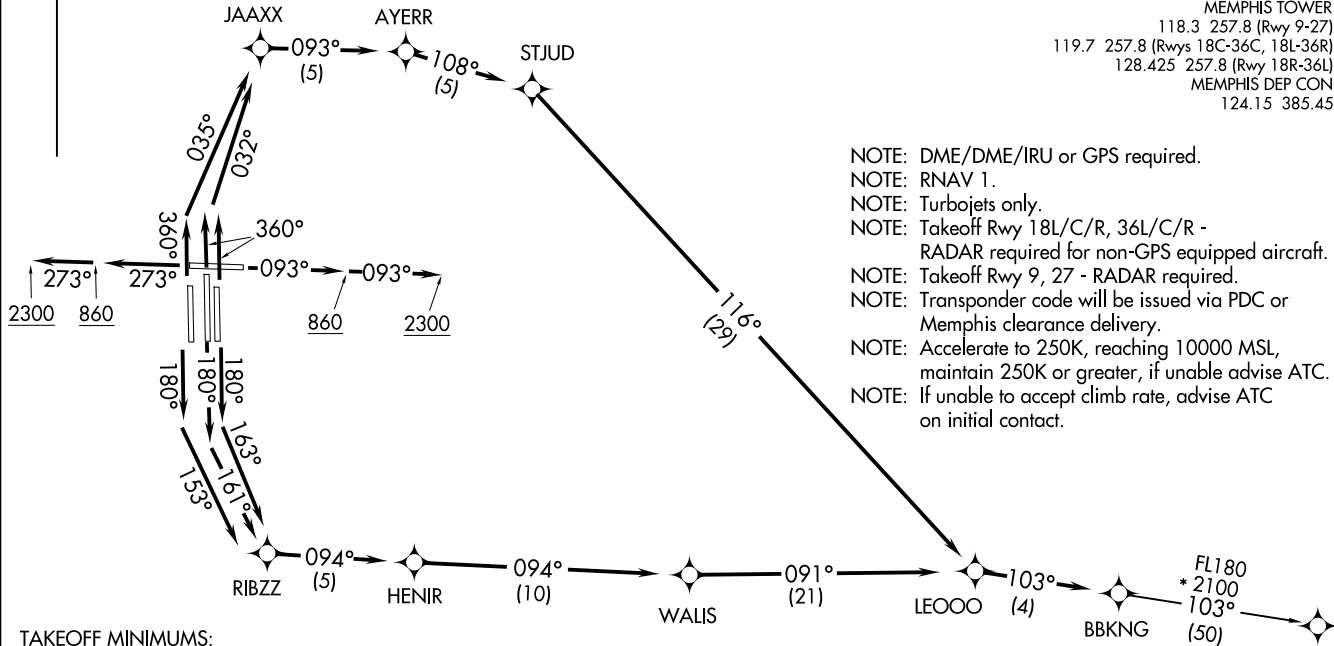


BBKNG SEVEN DEPARTURE (RNAV)  
(BBKNG7.BBKNG) 31DEC20

MEMPHIS, TENNESSEE  
MEMPHIS INTL (MEM)

TOP ALTITUDE:  
5000



**TAKEOFF MINIMUMS:**

Rwy 9, 18L/C/R, 27, 36L/C/R: Standard with minimum climb of 500' per NM to 860.

NOTE: Chart not to scale.

(NARRATIVE ON FOLLOWING PAGE)

|                 |                                     |
|-----------------|-------------------------------------|
| D-ATIS          | 127.75                              |
| CLNC DEL        | 125.2                               |
| CPDLC           |                                     |
| GND CON         | 121.0 379.2 (Rwy 9-27)              |
|                 | 121.9 379.2 (Rwys 18C-36C, 18L-36R) |
|                 | 121.65 379.2 (Rwy 18R-36L)          |
| MEMPHIS TOWER   | 118.3 257.8 (Rwy 9-27)              |
|                 | 119.7 257.8 (Rwys 18C-36C, 18L-36R) |
|                 | 128.425 257.8 (Rwy 18R-36L)         |
| MEMPHIS DEP CON |                                     |
|                 | 124.15 385.45                       |

NOTE: DME/DME/IRU or GPS required.

NOTE: RNAV 1.

NOTE: Turbojets only.

NOTE: Takeoff Rwy 18L/C/R, 36L/C/R - RADAR required for non-GPS equipped aircraft.

NOTE: Takeoff Rwy 9, 27 - RADAR required.

NOTE: Transponder code will be issued via PDC or Memphis clearance delivery.

NOTE: Accelerate to 250K, reaching 10000 MSL, maintain 250K or greater, if unable advise ATC.

NOTE: If unable to accept climb rate, advise ATC on initial contact.

(BBKNG7.BBKNG) 22195

AL-253 (FAA)

MEMPHIS INTL (MEM)  
MEMPHIS, TENNESSEE



DEPARTURE ROUTE DESCRIPTION

TAKEOFF RUNWAY 9: Climb on heading 093° to 860, then continue climb to 2300 on heading 093° or assigned by ATC, for vectors to LEOOO, then on depicted route to BBKNG, thence....

TAKEOFF RUNWAY 18C: Climb on heading 180° to intercept course 161° to RIBZZ, then on depicted route to BBKNG, thence....

TAKEOFF RUNWAY 18L: Climb on heading 180° to intercept course 163° to RIBZZ, then on depicted route to BBKNG, thence....

TAKEOFF RUNWAY 18R: Climb on heading 180° to intercept course 153° to RIBZZ, then on depicted route to BBKNG, thence....

TAKEOFF RUNWAY 27: Climb on heading 273° to 860, then continue climb to 2300 on heading 273° or assigned by ATC, for vectors to LEOOO, then on depicted route to BBKNG, thence....

TAKEOFF RUNWAY 36L: Climb on heading 360° to intercept course 035° to JAAXX, then on depicted route to BBKNG, thence....

TAKEOFF RUNWAYS 36C/R: Climb on heading 360° to intercept course 032° to JAAXX, then on depicted route to BBKNG, thence....

...maintain 5000. Expect clearance to filed altitude within ten (10) minutes after departure.

KERMI TRANSITION (BBKNG7.KERMI):

SE-1, 20 FEB 2025 to 20 MAR 2025

SE-1, 20 FEB 2025 to 20 MAR 2025