

CONDR FOUR ARRIVAL (RNAV)

SE-1, 20 FEB 2025 to 20 MAR 2025

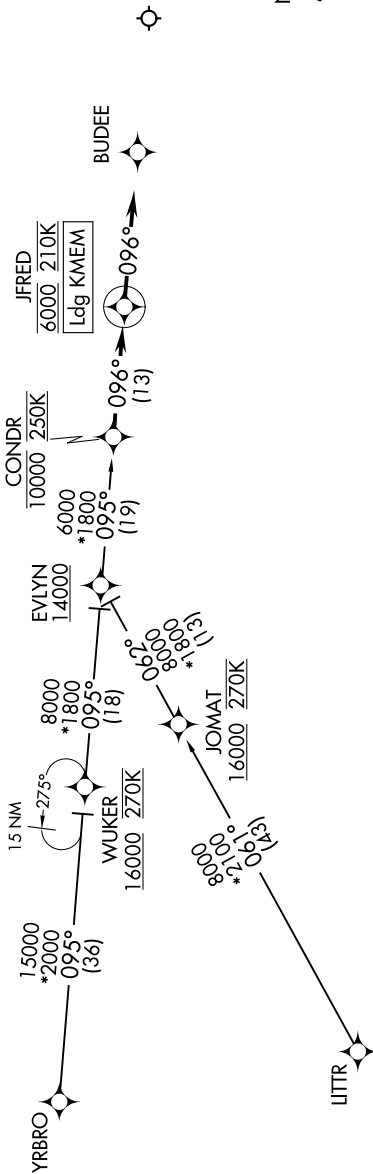
ARRIVAL ROUTE DESCRIPTION

EVLYN TRANSITION (EVLYN.CONDR4):
LITTR TRANSITION (LITTR.CONDR4):
YRBRO TRANSITION (YRBRO.CONDR4):

From CONDR on track 096° to cross JFRED at 6000 and at 210K, then on track 096°. Expect RADAR vectors to final approach course.

RNAV 1 - DME/DME/IRU or GPS.
RADAR required.

MEMPHIS APP CON
 119.1 291.6 (176°-355°)
 125.8 338.3 (356°-175°)
 D-ATIS
 127.75



NOTE: Jet aircraft only.
 NOTE: Do not file - to be assigned by ATC.

NOTE: Chart not to scale.

CONDR FOUR ARRIVAL (RNAV)

(CONDR.CONDR4) 31OCT24

SE-1, 20 FEB 2025 to 20 MAR 2025