

LOC I-SDU <b>111.95</b>	APP CRS <b>180°</b>	Rwy ldg <b>11120</b> TDZE <b>290</b> Apt Elev <b>341</b>
----------------------------	------------------------	--

# ILS or LOC RWY 18C

MEMPHIS INTL (MEM)

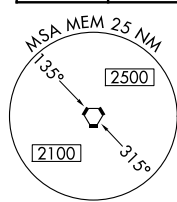
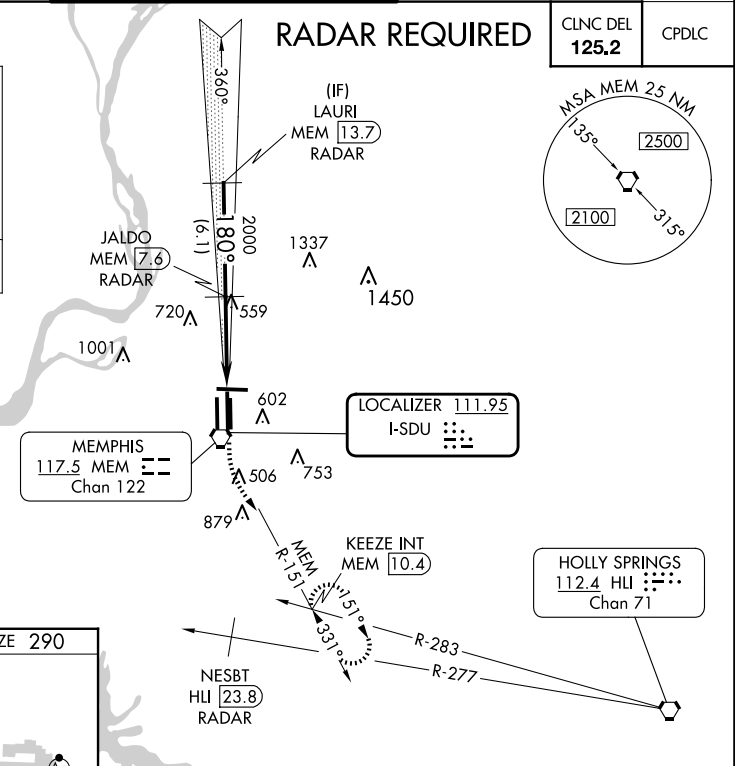
<p>Simultaneous approach authorized. DME or RADAR required. For inop ALS, increase S-ILS 18C all Cats visibility to 1/2 SM.</p>	<p>MALSR A5</p>	<p>MISSED APPROACH: Climb to 900 then climbing left turn to 5000 on MEM VORTAC R-151 to KEEZE INT/MEM 10.4 DME and hold, continue climb-in-hold to 5000.</p>
---	---------------------	--

MEMPHIS APP CON	MEMPHIS TOWER	GND CON
<b>119.1 291.6</b> (176°-355°)	(Rwy 9-27) <b>118.3 257.8</b>	(Rwy 9-27) <b>121.0 379.2</b>
<b>125.8 338.3</b> (356°-175°)	(Rwys 18C-36C, 18L-36R) <b>119.7 257.8</b>	(Rwys 18C-36C, 18L-36R) <b>121.9 379.2</b>
	(Rwy 18R-36L) <b>128.425 257.8</b>	(Rwy 18R-36L) <b>121.65 379.2</b>

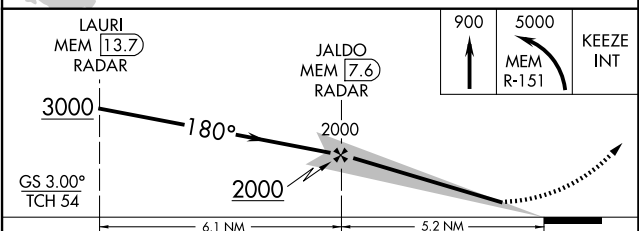
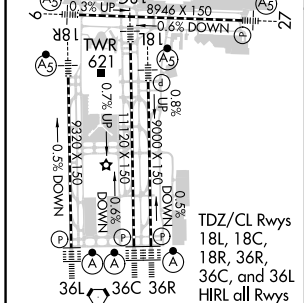
D-ATIS <b>127.75</b>	CLNC DEL <b>125.2</b>	CPDLC
-------------------------	--------------------------	-------

ALTERNATE MISSED APCH FIX

NESBT  
HLI **23.8**  
RADAR



ELEV 341	<b>D</b>	TDZE 290
----------	----------	----------



TDZ/CL Rwys 18L, 18C, 18R, 36R, 36C, and 36L HIRL all Rwys	FAF to MAP 5.2 NM				
Knots	60	90	120	150	180
Min:Sec	5:12	3:28	2:36	2:05	1:44
<b>C</b> CIRCLING	940-1	599 (600-1)	860/50 570 (600-1)	860/60 570 (600-1/4)	860/11/2 570 (600-1/2)
S-ILS 18C	657/40 367 (400-3/4)				
S-LOC 18C	860/24	570 (600-1/2)	860/50 570 (600-1)	860/60 570 (600-1/4)	860/11/2 570 (600-1/2)
			940-1 1/2 599 (600-1/2)	1020-2 1/4 679 (700-2/4)	1140-2 3/4 799 (800-2 3/4)

SE-1, 20 FEB 2025 to 20 MAR 2025

SE-1, 20 FEB 2025 to 20 MAR 2025