

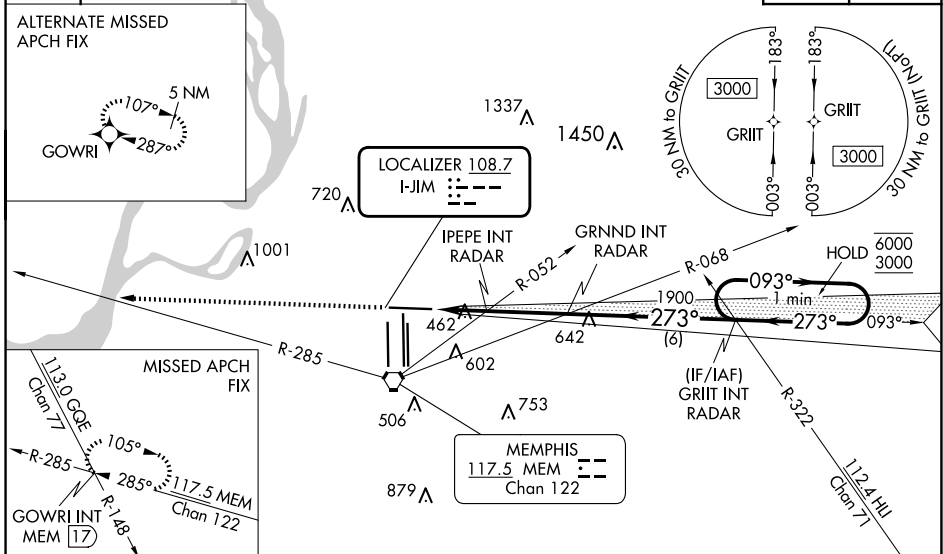
LOC I-JIM <b>108.7</b>	APP CRS <b>273°</b>	Rwy Idg TDZE Apt Elev	<b>8946</b> <b>292</b> <b>341</b>
---------------------------	------------------------	-----------------------------	---

# ILS or LOC RWY 27

MEMPHIS INTL (MEM)

RNAV 1-GPS or RADAR required for procedure entry.		MALS R	MISSED APPROACH: Climb to 5000 and intercept MEM VORTAC R-285 to GOWRI INT/17 DME and hold, continue climb-in-hold to 5000.
▼ For inop ALS, increase S-ILS Cat E visibility to RVR 4000, and S-LOC Cat E visibility to 2 SM, IPEPE fix minimums S-LOC Cat E visibility to 1/4 SM. ▲ *RVR 1800 authorized with use of FD or AP or HUD to DA.			
MEMPHIS APP CON		MEMPHIS TOWER	GND CON
<b>119.1 291.6</b> (176°-355°)	(Rwy 9-27)	<b>118.3 257.8</b>	(Rwy 9-27)
<b>125.8 338.3</b> (356°-175°)	(Rwys 18C-36C, 18L-36R)	<b>119.7 257.8</b>	(Rwys 18C-36C, 18L-36R)
	(Rwy 18R-36L)	<b>128.425 257.8</b>	(Rwy 18R-36L)
			<b>121.0 379.2</b>
			<b>121.9 379.2</b>
			<b>121.65 379.2</b>

D-ATIS <b>127.75</b>	CLNC DEL <b>125.2</b>	CPDLC
-------------------------	--------------------------	-------



ELEV 341	TDZE 292	5000	VGSI and ILS glidepath not coincident (VGSI Angle 3.00/TCH 69).		One Minute Holding Pattern
		MEM R-285	GOWRI INT	GRNND INT RADAR	GRIIT INT RADAR
				GS 3.00° TCH 54	
CATEGORY	A	B	C	D	E
S-ILS 27 *	492/24 200 (200-1/2)				
S-LOC 27	980/24	688 (700-1/2)	980-1 1/2 688 (700-1 1/2)		
<b>C</b> CIRCLING	980-1	639 (700-1)	980-2	1020-2 1/4	1140-2 3/4
IPEPE FIX MINIMUMS (DUAL VOR RECEIVERS OR RADAR REQUIRED)					
S-LOC 27	720/24	428 (400-1/2)	720/40 428 (400-3/4)		
<b>C</b> CIRCLING	940-1	599 (600-1)	940-1 1/2	1020-2 1/4	1140-2 3/4
FAF to MAP 4.9 NM					
Knots	60	90	120	150	180
Min:Sec	4:54	3:16	2:27	1:58	1:38

SE-1, 20 FEB 2025 to 20 MAR 2025

SE-1, 20 FEB 2025 to 20 MAR 2025