

LOC/DME I-TSE 110.5 Chan 42	APP CRS 360°	Rwy Idg 10715 TDZE 341 Apt Elev 341
---	------------------------	--

ILS or LOC RWY 36C

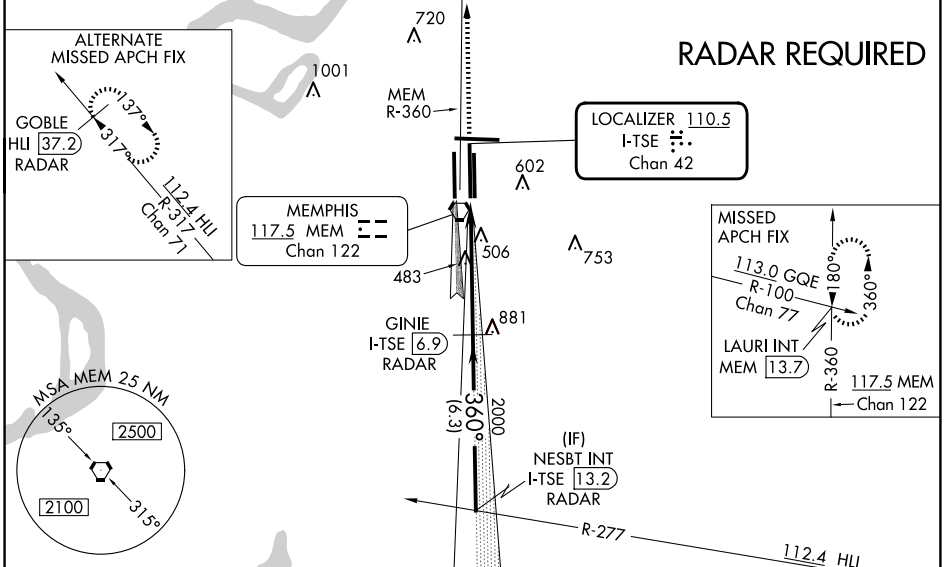
MEMPHIS INTL (MEM)

▲ For inoperative ALS, increase S-ILS 36C Cat E visibility to RVR 4000 and S-LOC 36C Cat C/D/E visibility to RVR 6000. DME or RADAR required. Simultaneous approach authorized with Rwy 36L.

▲ MISSED APPROACH: Climb to 3000 via MEM VORTAC R-360 to LAURI INT/MEM 13.7 DME and hold.

MEMPHIS APP CON 119.1 291.6 (176°-355°) 125.8 338.3 (356°-175°)	MEMPHIS TOWER (Rwy 9-27) 118.3 257.8 (Rwys 18C-36C, 18L-36R) 119.7 257.8 (Rwy 18R-36L) 128.425 257.8	GND CON (Rwy 9-27) 121.0 379.2 (Rwys 18C-36C, 18L-36R) 121.9 379.2 (Rwy 18R-36L) 121.65 379.2
---	--	---

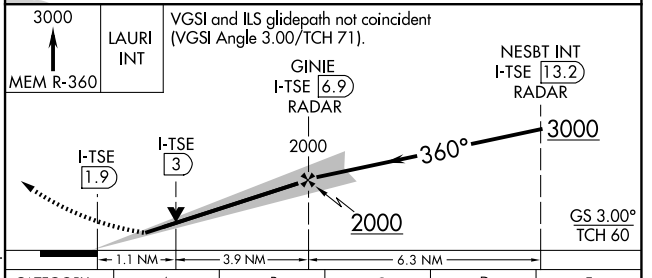
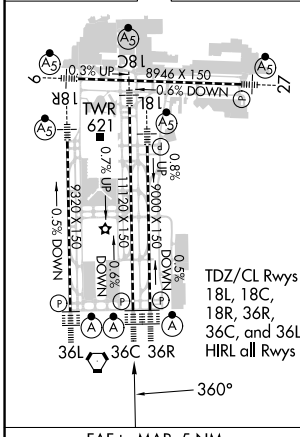
D-ATIS 127.75	1337 ▲	▲ 1450	CLNC DEL 125.2	CPDLC
-------------------------	---------------	---------------	--------------------------	-------



SE-1, 20 FEB 2025 to 20 MAR 2025

SE-1, 20 FEB 2025 to 20 MAR 2025

ELEV 341	D	TDZE 341
-----------------	----------	-----------------



CATEGORY	A	B	C	D	E
S-ILS 36C	541/18 200 (200-½)				541/24 200 (200-½)
S-LOC 36C	760/24	419 (500-½)	760/40	419 (500-¾)	760/50 419(500-1)
■ CIRCLING	940-1	599 (600-1)	940-1½ 599 (600-1½)	1020-2¼ 679 (700-2¼)	1140-2¾ 799 (800-2¾)