

# JTEEE FIVE DEPARTURE (RNAV)

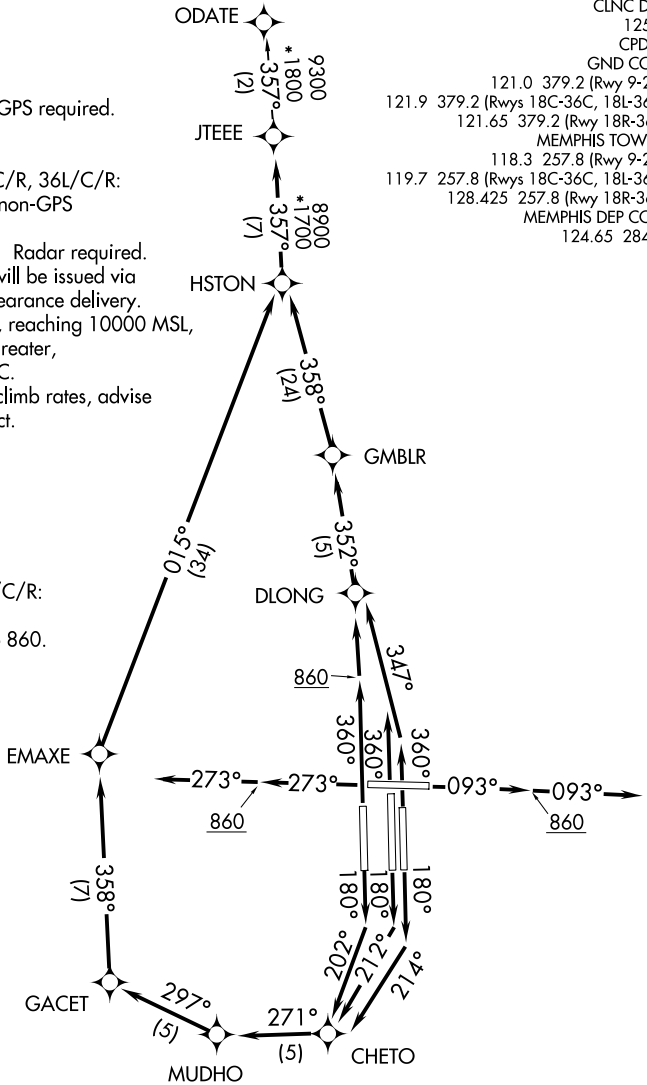
**TOP ALTITUDE:  
5000**

(NARRATIVE ON FOLLOWING PAGE)

D-ATIS 127.75  
 CLNC DEL 125.2  
 CPDLC  
 GND CON 121.0 379.2 (Rwy 9-27)  
 121.9 379.2 (Rwys 18C-36C, 18L-36R)  
 121.65 379.2 (Rwy 18R-36L)  
 MEMPHIS TOWER 118.3 257.8 (Rwy 9-27)  
 119.7 257.8 (Rwys 18C-36C, 18L-36R)  
 128.425 257.8 (Rwy 18R-36L)  
 MEMPHIS DEP CON 124.65 284.7

- NOTE: DME/DME/IRU or GPS required.
- NOTE: RNAV 1.
- NOTE: Turbojets only.
- NOTE: Takeoff Rwy 18L/C/R, 36L/C/R: Radar required for non-GPS equipped aircraft.
- NOTE: Takeoff Rwy 9, 27: Radar required.
- NOTE: Transponder code will be issued via PDC or Memphis clearance delivery.
- NOTE: Accelerate to 250K, reaching 10000 MSL, maintain 250K or greater, if unable advise ATC.
- NOTE: If unable to accept climb rates, advise ATC on initial contact.

**TAKEOFF MINIMUMS:**  
 Rwys 9, 18L/C/R, 27, 36L/C/R:  
 Standard with minimum climb of 500' per NM to 860.



NOTE: Chart not to scale.

SE-1, 20 FEB 2025 to 20 MAR 2025

SE-1, 20 FEB 2025 to 20 MAR 2025

# JTEEE FIVE DEPARTURE (RNAV)

(JTEEE5.JTEEE) 31DEC20

# JTEEE FIVE DEPARTURE (RNAV)

## DEPARTURE ROUTE DESCRIPTION



TAKEOFF RUNWAY 9: Climb on heading 093° to 860, then continue climb on heading 093°, expect vectors to HSTON, then on depicted route to JTEEE, thence....

TAKEOFF RUNWAY 18C: Climb on heading 180° to intercept course 212° to CHETO, then on depicted route to JTEEE, thence....

TAKEOFF RUNWAY 18L: Climb on heading 180° to intercept course 214° to CHETO, then on depicted route to JTEEE, thence....

TAKEOFF RUNWAY 18R: Climb on heading 180° to intercept course 202° to CHETO, then on depicted route to JTEEE, thence....

TAKEOFF RUNWAY 27: Climb on heading 273° to 860, then continue climb on heading 273°, expect vectors to HSTON, then on depicted route to JTEEE thence....

TAKEOFF RUNWAY 36L: Climb on heading 360° to 860, then direct DLONG, then on depicted route to JTEEE, thence....

TAKEOFF RUNWAYS 36C/R: Climb on heading 360° to intercept course 347° to DLONG, then on depicted route to JTEEE, thence....

....maintain 5000. Expect clearance to filed altitude within ten (10) minutes after departure.

ODATE TRANSITION (JTEEE5.ODATE):

SE-1, 20 FEB 2025 to 20 MAR 2025

SE-1, 20 FEB 2025 to 20 MAR 2025