

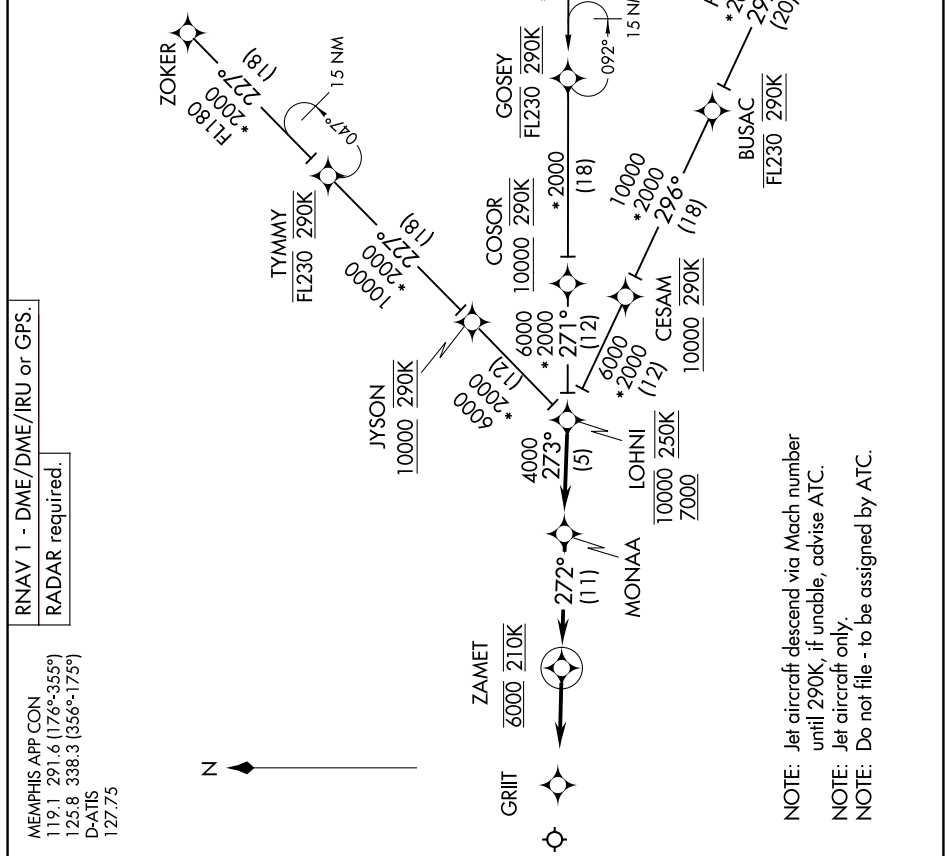
# MONAA FOUR ARRIVAL (RNAV)

SE-1, 20 FEB 2025 to 20 MAR 2025

**ARRIVAL ROUTE DESCRIPTION**

FASON TRANSITION (FASON.MONAA4);  
 HOMNN TRANSITION (HOMNN.MONAA4);  
 MATCN TRANSITION (MATCN.MONAA4);  
 ZOKER TRANSITION (ZOKER.MONAA4);

From LOHNI on track 273° to MONAA, then on track 272° to cross ZAMET at 6000 and 210K, then on track 272°. Expect radar vectors to final approach course.



RNAV 1 - DME/DME/IRU or GPS.  
 RADAR required.

MEMPHIS APP CON  
 119.1 291.6 (176°-355°)  
 125.8 338.3 (356°-175°)  
 D-ATIS  
 127.75

NOTE: Jet aircraft descend via Mach number until 290K, if unable, advise ATC.  
 NOTE: Jet aircraft only.  
 NOTE: Do not file - to be assigned by ATC.

NOTE: Chart not to scale.

SE-1, 20 FEB 2025 to 20 MAR 2025

# MONAA FOUR ARRIVAL (RNAV)