

WAAS CH 49107 W36D	APP CRS 360°	Rwy ldg TDZE Apt Elev	9000 335 341
--	------------------------	-----------------------------	---

RNAV (GPS) RWY 36R

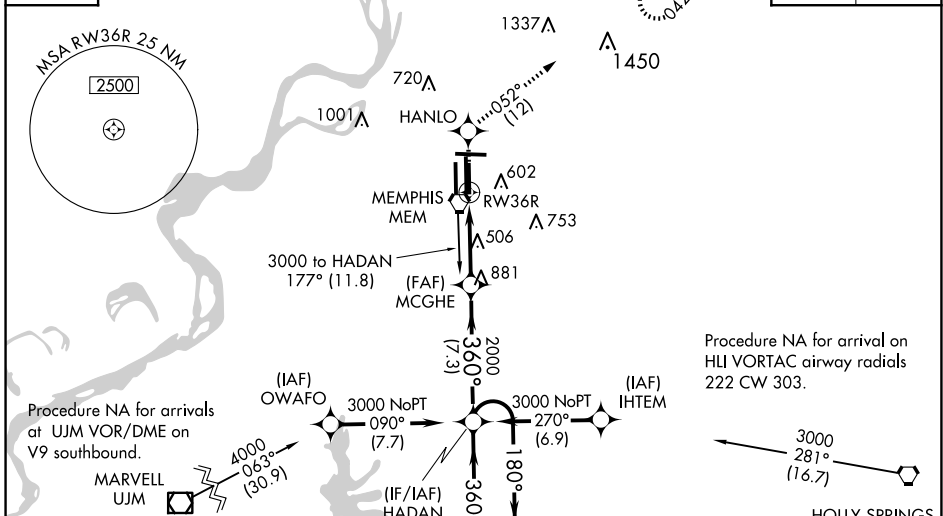
MEMPHIS INTL (MEM)

⚠ For uncompensated Baro-VNAV systems, LNAV/VNAV NA below -1.5°C (5°F) or above 48°C (118°F). Simultaneous approach authorized. DME/DME RNP-0.3 NA. LNAV procedure NA during simultaneous operations. Use of FD or AP required during simultaneous operations.

ALSF-2
MISSED APPROACH: Climb to 5000 direct HANLO and on 052° track to OROCU and hold, continue climb-in-hold to 5000.

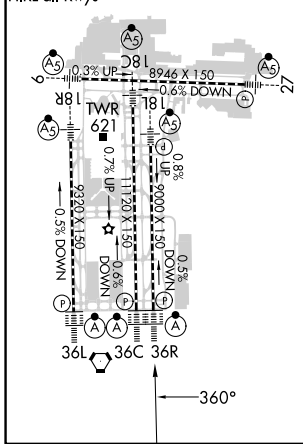
MEMPHIS APP CON 119.1 291.6 (176°-355°) 125.8 338.3 (356°-175°)	MEMPHIS TOWER (Rwy 9-27) 118.3 257.8 (Rwys 18C-36C, 18L-36R) 119.7 257.8 (Rwy 18R-36L) 128.425 257.8	GND CON (Rwy 9-27) 121.0 379.2 (Rwys 18C-36C, 18L-36R) 121.9 379.2 (Rwy 18R-36L) 121.65 379.2
---	--	---

D-ATIS 127.75	OROCU Δ 222°/042° 4 NM	CLNC DEL 125.2	CPDLC
-------------------------	-------------------------------	--------------------------	-------

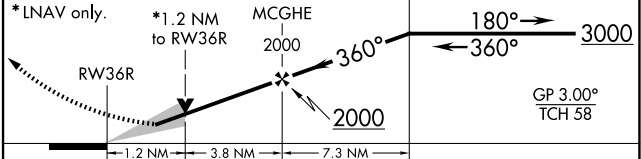


ELEV 341	D	TDZE 335
----------	----------	----------

TDZ/CL Rwys 18L, 18C, 18R, 36R, 36C, and 36L
HIRL all Rwys



5000	HANLO	tr 052°	OROCU	VGSI and RNAV glidepath not coincident (VGSI Angle 3.00/TCH 69).	4 NM
				HADAN	Holding Pattern



CATEGORY	A	B	C	D
LPV DA		639/24	304 (300-1/2)	
LNAV/VNAV DA		763/50	428 (500-1)	
LNAV MDA	760/24	425 (500-1/2)	760/40 425 (500-3/4)	760/50 425 (500-1)
C CIRCLING	940-1	599 (600-1)	940-1 1/2 599 (600-1 1/2)	1020-2 1/4 679 (700-2 1/4)

SE-1, 20 FEB 2025 to 20 MAR 2025

SE-1, 20 FEB 2025 to 20 MAR 2025