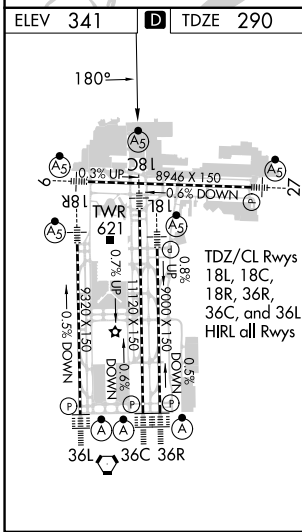
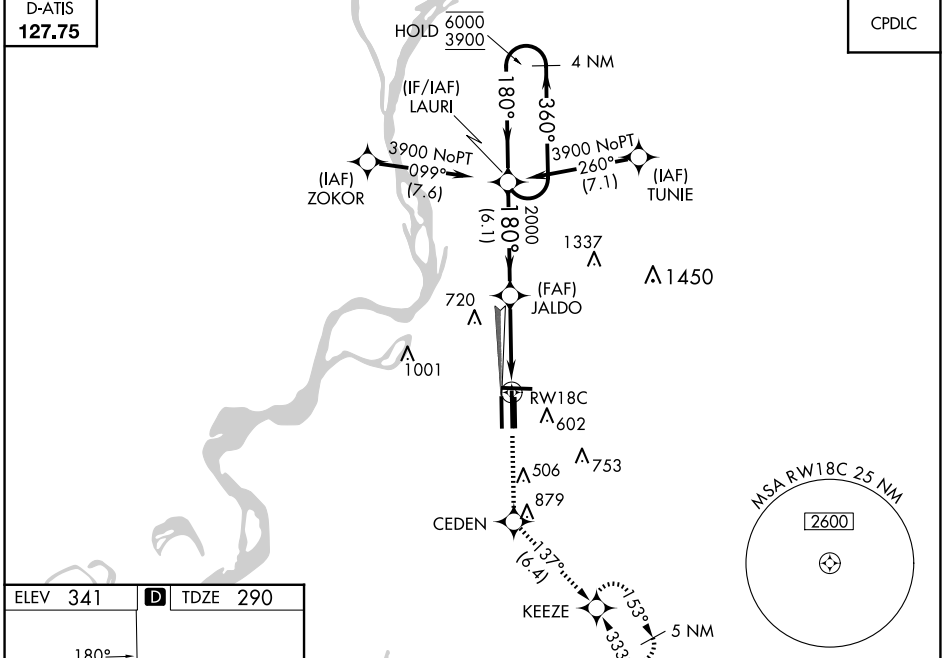


WAAS CH 97507 W18D	APP CRS 180°	Rwy Idg TDZE Apt Elev	1120 290 341
--	------------------------	-----------------------------	---

RNAV (GPS) Z RWY 18C

MEMPHIS INTL (MEM)

RNP APCH - GPS.		MEMPHIS TOWER		GND CON		CLNC DEL		
Simultaneous approach authorized. For uncompensated Baro-VNAV systems, LNAV/VNAV NA below -15°C or above 54°C. Use of FD or AP required during simultaneous operations. LNAV procedure NA during simultaneous operations. For Inop ALS, increase LPV all Cats visibility to RVR 5500 and LNAV/VNAV all Cats visibility to 1 3/8 SM.	MEMPHIS APP CON		MEMPHIS TOWER		GND CON		CLNC DEL	
	119.1 291.6 (176°-355°)		118.3 257.8 (Rwy 9-27)		121.0 379.2 (Rwy 9-27)		125.2	
	125.8 338.3 (356°-175°)		119.7 257.8 (Rwys 18C-36C, 18L-36R)		121.9 379.2 (Rwys 18C-36C, 18L-36R)		121.65 379.2 (Rwy 18R-36L)	
D-ATIS 127.75		128.425 257.8 (Rwy 18R-36L)						



ELEV 341	D	TDZE 290			
5000	CEDEEN	ir 137°	KEEZE	4 NM Holding Pattern	
RWY 18C		JALDO 2000	LAURI	6000 3900	
1.7 NM to RWY 18C		1.7 NM	3.5 NM	6.1 NM	
CATEGORY		A	B	C	D
LPV DA		665/35		375 (400-5%)	
LNAV/VNAV DA		782/50		492 (500-1)	
LNAV MDA		880-24		590 (600-1/2)	
CIRCLING		940-1		599 (600-1)	
		940-1 3/4		599 (600-1 3/4)	
		1020-2 1/4		679 (700-2 1/4)	

SE-1, 20 FEB 2025 to 20 MAR 2025

SE-1, 20 FEB 2025 to 20 MAR 2025