

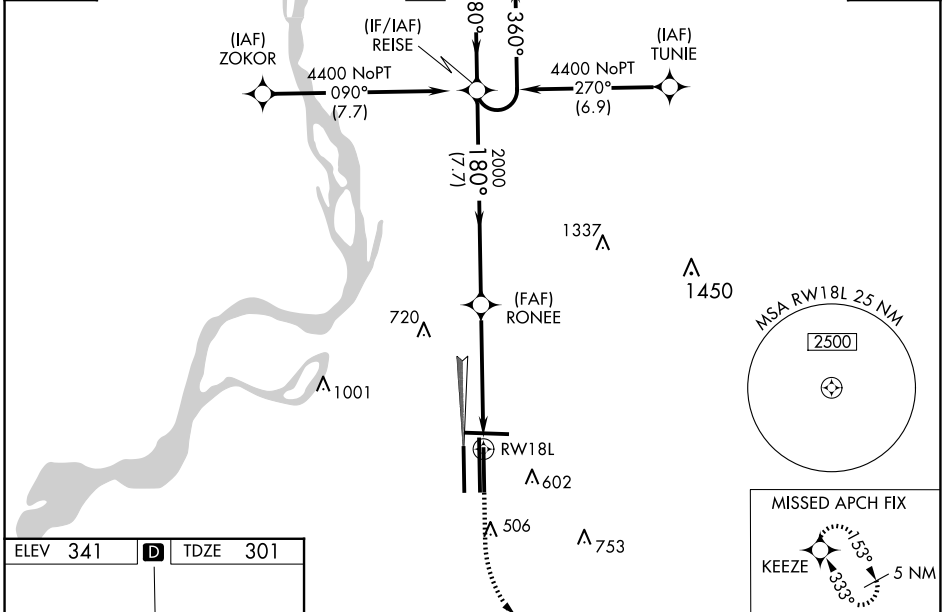
WAAS CH <b>53307</b> <b>W18B</b>	APP CRS <b>180°</b>	Rwy Idg TDZE Apt Elev	<b>9000</b> <b>301</b> <b>341</b>
--	------------------------	-----------------------------	---

# RNAV (GPS) Z RWY 18L

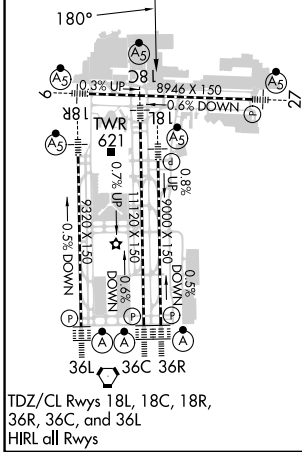
MEMPHIS INTL (MEM)

RNP APCH - GPS		MEMPHIS TOWER		GND CON		CLNC DEL	
<p>Simultaneous approach authorized. For uncompensated Baro-VNAV systems, LNAV/VNAV NA below -15°C or above 54°C. LNAV procedure NA during simultaneous operations. Use of FD or AP required during simultaneous operations. For inop ALS, increase LNAV/VNAV all Cats visibility to 1% SM and LNAV Cat C/D visibility to 1% SM.</p>		<p><b>118.3 257.8</b> (Rwy 9-27) <b>119.7 257.8</b> (Rwys 18C-36C, 18L-36R) <b>128.425 257.8</b> (Rwy 18R-36L)</p>		<p><b>121.0 379.2</b> (Rwy 9-27) <b>121.9 379.2</b> (Rwys 18C-36C, 18L-36R) <b>121.65 379.2</b> (Rwy 18R-36L)</p>		<p><b>125.2</b></p>	

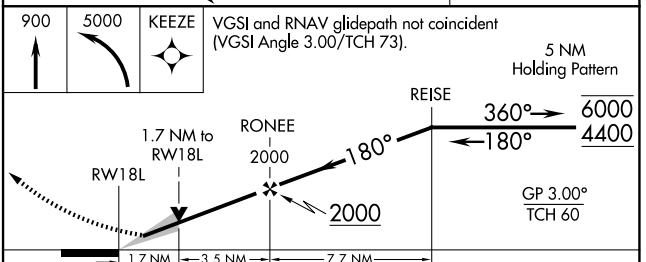
D-ATIS <b>127.75</b>	CPDLC
-------------------------	-------



ELEV 341	<b>D</b>	TDZE 301
----------	----------	----------



TDZ/CL Rwys 18L, 18C, 18R, 36R, 36C, and 36L  
HIRL all Rwys



CATEGORY	A	B	C	D
LPV DA	557/18 256 (300-1/2)			
LNAV/VNAV DA	874-1 573 (600-1 1/4)			
LNAV MDA	880/24 579 (600-1/2)		880-1 579 (600-1 1/4)	
<b>C</b> CIRCLING	940-1 599 (600-1)		940-1 599 (600-1 1/4) 1020-2 1/4 679 (700-2 1/4)	