

| | | | |
|--|------------------------|---|-------------|
| WAAS CH 61003 W19A | APP CRS 191° | Rwy ldg TDZE 293 Apt Elev 298 | 9013 |
|--|------------------------|---|-------------|

RNAV (GPS) RWY 19

KEY FLD (MEI)

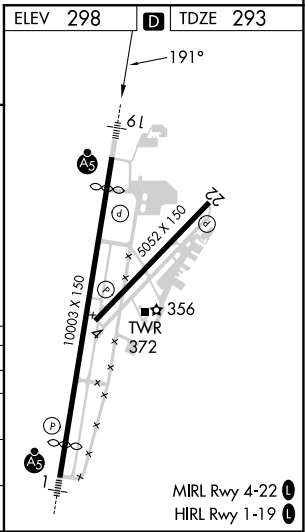
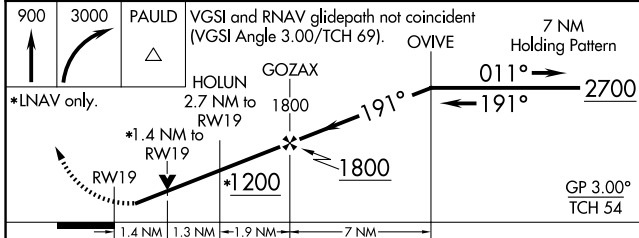
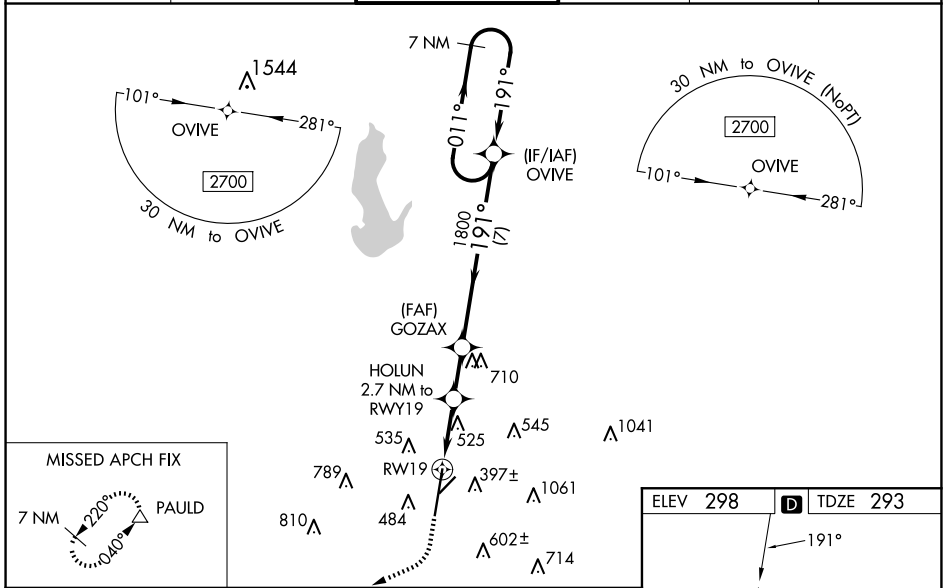
⚠ For uncompensated Baro-VNAV systems, LNAV/VNAV NA below -8°C (18°F) or above 54°C (130°F). Circling NA southeast of Rwy 1 and 22. DME/DME RNP-0.3 NA.

⚠ When local altimeter setting not received, use Hattiesburg/Laurel Rgnl altimeter setting and increase all DA 138 feet and all MDA 140 feet, increase LPV all Cats visibility to 1¼ mile, LNAV/VNAV all Cats visibility to 1½ mile, LNAV Cats C, D, and E visibility to 1¾ mile, and Circling Cat C visibility ½ mile and Cat D visibility ¼ mile. For inop MALSRL increase LPV Cat E to RVR 5500, LNAV/VNAV Cat E visibility to 1½ mile, and LNAV Cat E visibility to 1¾ mile. For inop MALSRL when using Hattiesburg/Laurel Rgnl altimeter setting, increase LPV Cat E visibility to 1¾ mile, LNAV/VNAV Cat E visibility to 1¾ mile and LNAV Cat E visibility to 1¾ mile. Helicopter visibility reduction below RVR 4000 NA. Baro-VNAV and VDP NA when using Hattiesburg/Laurel Rgnl altimeter setting. Night landing: Rwy 22 NA.

MALSRL

MISSED APPROACH:
Climb to 900 then climbing right turn to 3000 direct PAULD and hold.

| | | | | | |
|--------------------------------|--|--|-------------------------------|--------------------------------|-------------------------|
| ATIS 126.475 291.675 | MERIDIAN APP CON * 120.5 269.325 | KEY TOWER * 133.975 (CTAF) 0 257.8 | GND CON 121.9 348.6 | CLNC DEL 121.9 348.6 | UNICOM 122.95 |
|--------------------------------|--|--|-------------------------------|--------------------------------|-------------------------|



| CATEGORY | A | B | C | D | E |
|--------------|-------------|-------------|--------------|--------------------|-------------|
| LPV DA | 651/40 | | 358 (400-¾) | | |
| LNAV/VNAV DA | 745/53 | | 452 (500-1) | | |
| LNAV MDA | 780/40 | 487 (500-¾) | | 780/50 487 (500-1) | |
| CIRCLING | 860-1 | 880-1 | 960-1¾ | 1120-2¾ | 1120-3 |
| | 562 (600-1) | 582 (600-1) | 662 (700-1¾) | 822 (900-2¾) | 822 (900-3) |

SC-4, 20 FEB 2025 to 20 MAR 2025

SC-4, 20 FEB 2025 to 20 MAR 2025