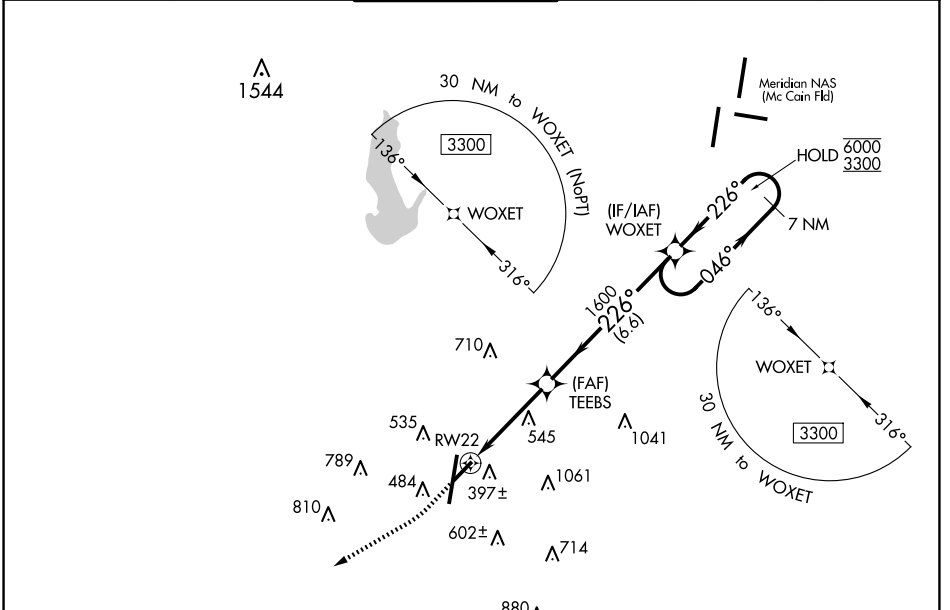


|  |                        |   |
|--|------------------------|---|
| WAAS<br>CH <b>48833</b><br><b>W22A</b> | APP CRS<br><b>226°</b> | Rwy Idg<br>TDZE <b>298</b><br>Apt Elev <b>298</b> |
|--|------------------------|---|

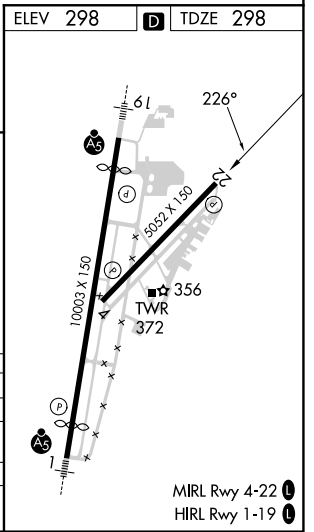
# RNAV (GPS) RWY 22

KEY FLD (MEI)

|  |  |  |                               |  |                         |
|--|--|--|-------------------------------|--|-------------------------|
| RNP APCH - GPS.  |  |  |                               | MISSED APPROACH: Climb to 1000 then climbing right turn to 3000 direct PAULD and hold. |                         |
| ▼ Rwy 22 helicopter visibility reduction below 3/4 SM NA.<br>▲ For uncompensated Baro-VNAV systems, LNAV/VNAV NA below -7°C or above 54°C.<br>▲ Circling NA east of Rwy 1 and southeast of Rwy 22. |  |  |                               |  |                         |
| ATIS<br><b>126.475 291.675</b>   | MERIDIAN APP CON ★<br><b>120.5 269.325</b> | KEY TOWER ★<br><b>133.975 (CTAF) 0 257.8</b> | GND CON<br><b>121.9 348.6</b> | CLNC DEL<br><b>121.9 348.6</b>   | UNICOM<br><b>122.95</b> |



|  |                   |                              |                              |                               |                      |
|--|-------------------|------------------------------|------------------------------|-------------------------------|----------------------|
| ELEV 298   | <b>D</b> TDZE 298 |                              |                              |                               |                      |
| 1000   | 3000              | PAULD                        | 7 NM                         | WOXET                         | 7 NM Holding Pattern |
| TEEBBS<br>1.8 NM to RW22<br>1600<br>226°<br>1600<br>GP 3.00°<br>TCH 52 |                   | 6000<br>3300<br>046°<br>226° |                              |                               |                      |
| 1.8 NM   |                   | 2.1 NM                       |                              | 6.6 NM                        |                      |
| CATEGORY   | A                 | B                            | C                            | D                             |                      |
| LPV DA   | 592-7/8           |                              | 294 (300-7/8)                |                               |                      |
| LNAV/VNAV DA   | 825-1 1/2         |                              | 527 (600-1 1/2)              |                               |                      |
| LNAV MDA   | 920-1             | 622 (700-1)                  | 920-3/4                      | 622 (700-1 3/4)               |                      |
| <b>C</b> CIRCLING  | 920-1             | 622 (700-1)                  | 960-1 3/4<br>662 (700-1 3/4) | 1120-2 3/4<br>822 (900-2 3/4) |                      |



SC-4, 20 FEB 2025 to 20 MAR 2025

SC-4, 20 FEB 2025 to 20 MAR 2025

MIRL Rwy 4-22  
HIRL Rwy 1-19