

DORRL TWO DEPARTURE (RNAV)

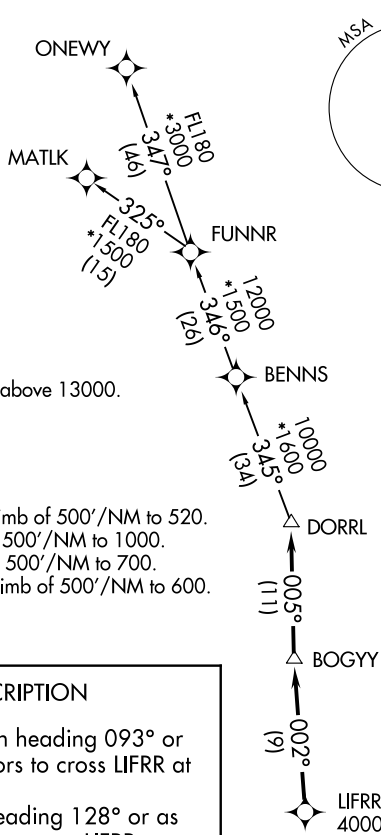
MIAMI, FLORIDA

MIAMI DEP CON
 119.45 290.325
 ATIS
 125.9
 CLNC DEL
 119.2
 GND CON
 120.025
 OPA LOCKA TOWER ★
 134.675 (CTAF)

**TOP ALTITUDE:
 ASSIGNED BY ATC**

RNAV 1 - DME/DME/IRU or GPS.

RADAR required.



NOTE: For turbo-props/props filed at or above 13000.

TAKEOFF MINIMUMS

- Rwys 27L, 30: Standard with minimum climb of 500'/NM to 520.
- Rwy 9L: Standard with minimum climb of 500'/NM to 1000.
- Rwy 9R: Standard with minimum climb of 500'/NM to 700.
- Rwys 12, 27R: Standard with minimum climb of 500'/NM to 600.

DEPARTURE ROUTE DESCRIPTION

TAKEOFF RUNWAYS 9L/R: Climb on heading 093° or as assigned by ATC for RADAR vectors to cross LIFRR at or above 4000, thence. . . .

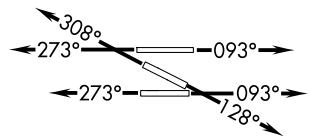
TAKEOFF RUNWAY 12: Climb on heading 128° or as assigned by ATC for RADAR vectors to cross LIFRR at or above 4000, thence. . . .

TAKEOFF RUNWAYS 27L/R: Climb on heading 273° or as assigned by ATC for RADAR vectors to cross LIFRR at or above 4000, thence. . . .

TAKEOFF RUNWAY 30: Climb on heading 308° or as assigned by ATC for RADAR vectors to cross LIFRR at or above 4000, thence. . . .

. . . on track 002° to BOGY, then on track 005° to DORRL then on (transition), maintain altitude as assigned by ATC, expect filed altitude 10 minutes after departure.

MATLK TRANSITION (DORRL2.MATLK)
ONEWY TRANSITION (DORRL2.ONEWY)



NOTE: Chart not to scale.