

(FOLZZ3.FOLZZ) 24081

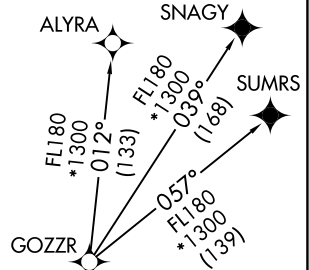
AL-256 (FAA)

MIAMI-OPA LOCKA EXEC (OPF)
MIAMI, FLORIDA

FOLZZ THREE DEPARTURE(RNAV)

MIAMI DEP CON
119.45 290.325
ATIS
125.9
CLNIC DEL
119.2
GND CON
120.025
OPA LOCKA TOWER*
134.675 (CTAF)

**TOP ALTITUDE:
ASSIGNED BY ATC**



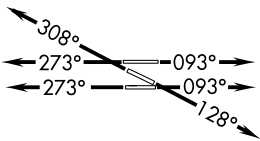
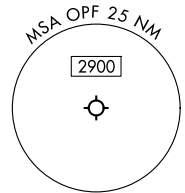
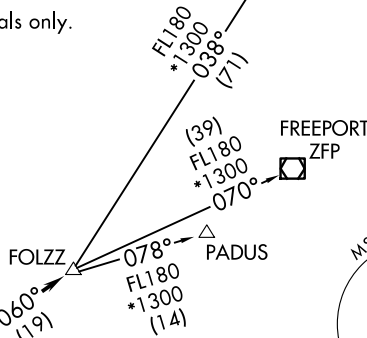
RNAV-1 DME/DME/IRU or GPS.
SNAGY and SUMRS Transitions: RNAV 1-GPS.

RADAR required.

- NOTE: Jet aircraft only.
- NOTE: Accelerate to 250K until leaving 10000, if unable, advise ATC.
- NOTE: PADUS Transition for Freeport arrivals only.
- NOTE: SNAGY and SUMRS Transitions for European traffic only.

TAKEOFF MINIMUMS

- Rwy 9L: Standard with minimum climb of 500'/NM to 1000.
- Rwy 9R: Standard with minimum climb of 500'/NM to 700.
- Rwy 12, 27R: Standard with minimum climb 500'/NM to 600.
- Rwy 27L, 30: Standard.



MARCK
5000

NOTE: Chart not to scale.

DEPARTURE ROUTE DESCRIPTION

TAKEOFF RUNWAYS 9L/R: Climb on heading 093° or as assigned by ATC for RADAR vectors to cross MARCK at or above 5000, thence. . .

TAKEOFF RUNWAY 12: Climb on heading 128° or as assigned by ATC for RADAR vectors to cross MARCK at or above 5000, thence. . .

TAKEOFF RUNWAYS 27L/R: Climb on heading 273° or as assigned by ATC for RADAR vectors to cross MARCK at or above 5000, thence. . .

TAKEOFF RUNWAY 30: Climb on heading 308° or as assigned by ATC for RADAR vectors to cross MARCK at or above 5000, thence. . .

. . . on track 060° to FOLZZ, then on assigned transition. Maintain ATC assigned altitude, expect filed altitude within 10 minutes after departure.

- ALYRA TRANSITION (FOLZZ3.ALYRA)
- FREEPORT TRANSITION (FOLZZ3.ZFP)
- GOZZR TRANSITION (FOLZZ3.GOZZR)
- PADUS TRANSITION (FOLZZ3.PADUS)
- SNAGY TRANSITION (FOLZZ3.SNAGY)
- SUMRS TRANSITION (FOLZZ3.SUMRS)

FOLZZ THREE DEPARTURE(RNAV)
(FOLZZ3.FOLZZ) 21MAR24

MIAMI, FLORIDA
MIAMI-OPA LOCKA EXEC (OPF)

SE-3, 20 FEB 2025 to 20 MAR 2025