

LOC/DME I-PLJ <b>111.35</b> Chan 50 (Y)	APP CRS <b>273°</b>	Rwy Idg 8002 TDZE 8 Apt Elev 8
---	------------------------	---

# ILS or LOC RWY 27R

MIAMI-OPA LOCKA EXEC (OPF)

**▼** DME required. When local altimeter setting not received, use Miami Intl altimeter setting and increase all DA/MDA 20 feet and Circling Cat D visibility ¼ SM. For inop ALS, increase S-ILS 27R all Cats visibility to ¾ SM and S-LOC 27R Cats C/D visibility to 1½ SM. Rwy 27R helicopter visibility reduction below ¾ SM NA. Autopilot coupled approach NA below 700 feet.

MALS

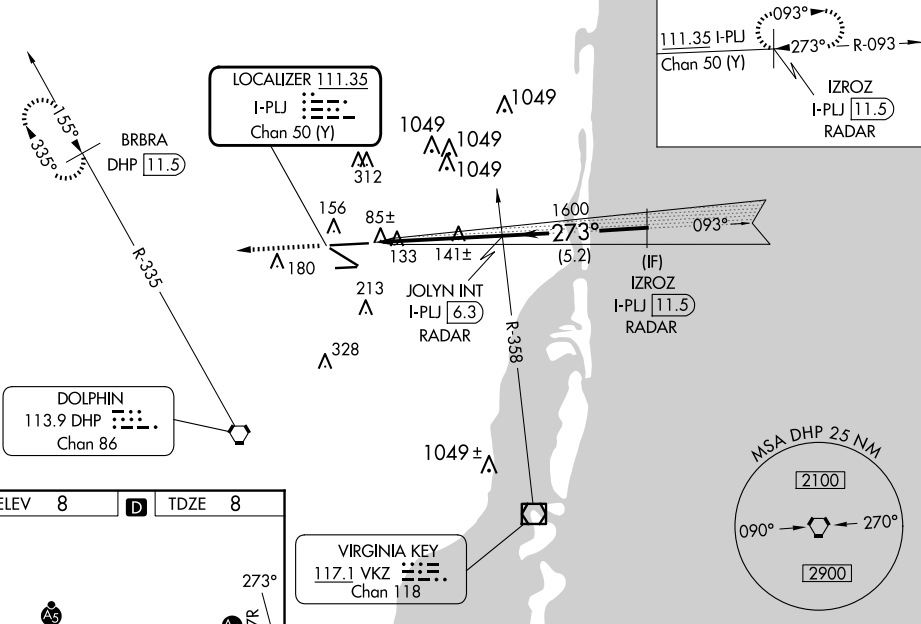


MISSED APPROACH: Climb to 2000 heading 273° and DHP VORTAC R-335 to BRBRA/DHP 11.5 DME and hold.

ATIS <b>125.9</b>	MIAMI APP CON <b>128.6 306.975</b>	OPA LOCKA TOWER ★ <b>134.675 (CTAF)</b>	GND CON <b>120.025</b>	CLNC DEL <b>119.2</b>	GCO <b>119.45</b>
----------------------	---------------------------------------	--	---------------------------	--------------------------	----------------------

## RADAR REQUIRED

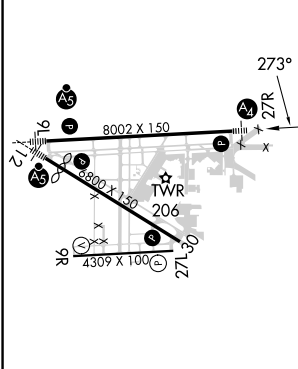
ALTERNATE MISSED APCH FIX



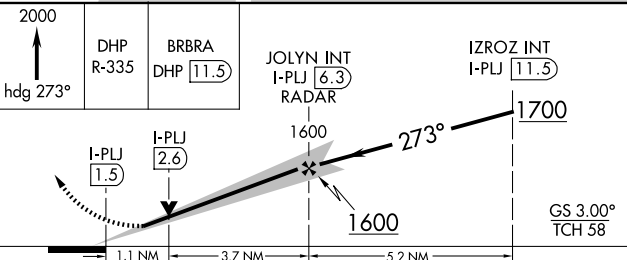
SE-3, 20 FEB 2025 to 20 MAR 2025

SE-3, 20 FEB 2025 to 20 MAR 2025

ELEV 8	<b>D</b>	TDZE 8
--------	----------	--------



VIRGINIA KEY  
117.1 VKZ  
Chan 118



MIRL Rwy 9R-27L  
HIRL Rwys 9L-27R and 12-30

FAF to MAP 4.8 NM

Knots	60	90	120	150	180
Min:Sec	4:48	3:12	2:24	1:55	1:36

CATEGORY	A	B	C	D
S-ILS 27R	291-¾ 283 (300-¾)			
S-LOC 27R	420-¾	412 (500-¾)	420-1	412 (500-1)
CIRCLING	540-1	532 (600-1)	620-1¾ 612 (700-1¾)	740-2¼ 732 (800-2¼)