


LOC I-OPF <b>110.5</b>	APP CRS <b>093°</b>	Rwy Idg <b>8002</b> TDZE <b>8</b> Apt Elev <b>8</b>
---------------------------	------------------------	-----------------------------------------------------------

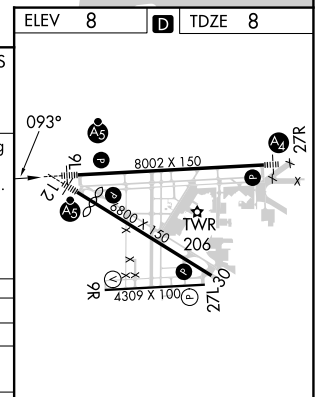
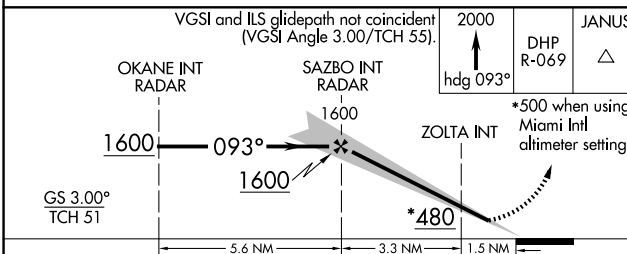
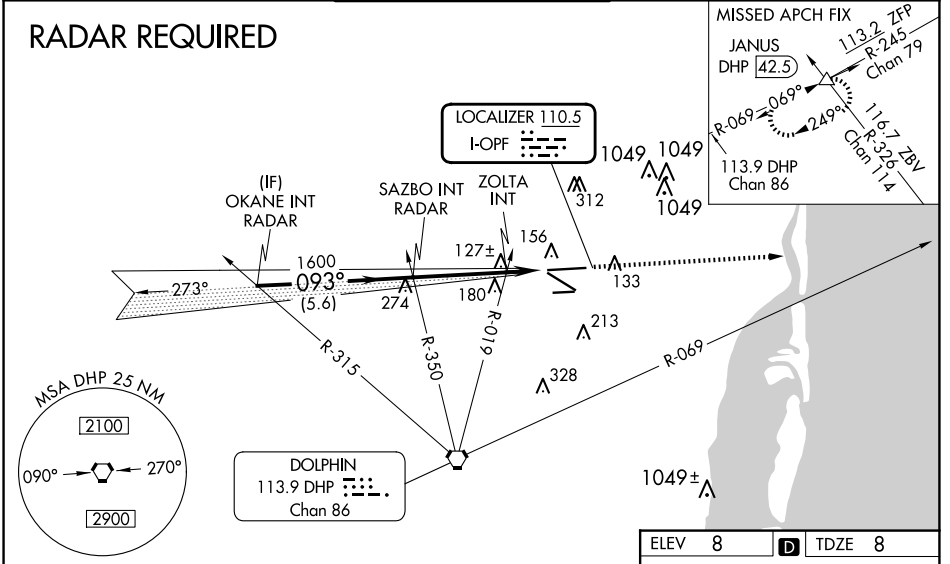
# ILS or LOC RWY 9L

MIAMI-OPA LOCKA EXEC(OPF)

**⚠** Inop table does not apply. Helicopter visibility reduction below 3/4 SM NA.  
**⚠** Caution: Lights on highway 0.7 NM north may be mistaken for runway.  
 When local altimeter setting not received, use Miami Intl altimeter setting and increase all DA/MDA 20 feet and Circling Cat D visibility 1/4 SM. For inop MALSRL, increase S-LOC 9L Cats A and B visibility to 1 mile and Cats C and D visibility to 1 3/8 miles. ZOLTA Fix Minimums, for inop MALSRL, increase S-LOC 9L all Cats visibility to 1 mile. ZOLTA Fix Minimums, for inop MALSRL, when using Miami Intl altimeter setting, increase Cats A and B visibility to 1 mile and Cats C and D visibility to 1 1/8 miles. For inop MALSRL, when using Miami Intl altimeter setting, increase S-ILS 9L all Cats visibility to 7/8 mile.

MALSRL  
  
 MISSED APPROACH: Climb to 2000 heading 093° and DHP VORTAC R-069 to JANUS INT/DHP 42.5 DME and hold.

ATIS <b>125.9</b>	MIAMI APP CON <b>128.6 306.975</b>	OPA LOCKA TOWER ★ <b>134.675 (CTAF) 0</b>	GND CON <b>120.025</b>	CLNC DEL <b>119.2</b>	GCO <b>119.45</b>
----------------------	---------------------------------------	----------------------------------------------	---------------------------	--------------------------	----------------------



CATEGORY	A	B	C	D
S-ILS 9L		258-3/4	250 (300-3/4)	
S-LOC 9L	480-3/4	472 (500-3/4)	480-1	472 (500-1)
CIRCLING	540-1	532 (600-1)	620-1 3/4 612 (700-1 3/4)	740-2 1/4 732 (800-2 1/4)
ZOLTA FIX MINIMUMS				
S-LOC 9L		380-3/4	372 (400-3/4)	
CIRCLING	540-1	532 (600-1)	620-1 3/4 612 (700-1 3/4)	740-2 1/4 732 (800-2 1/4)

MIRL Rwy 9R-27L  
 HIRL Rwys 9L-27R and 12-30

FAF to MAP 4.8 NM

Knots	60	90	120	150	180
Min:Sec	4:48	3:12	2:24	1:55	1:36

SE-3, 20 FEB 2025 to 20 MAR 2025

SE-3, 20 FEB 2025 to 20 MAR 2025