

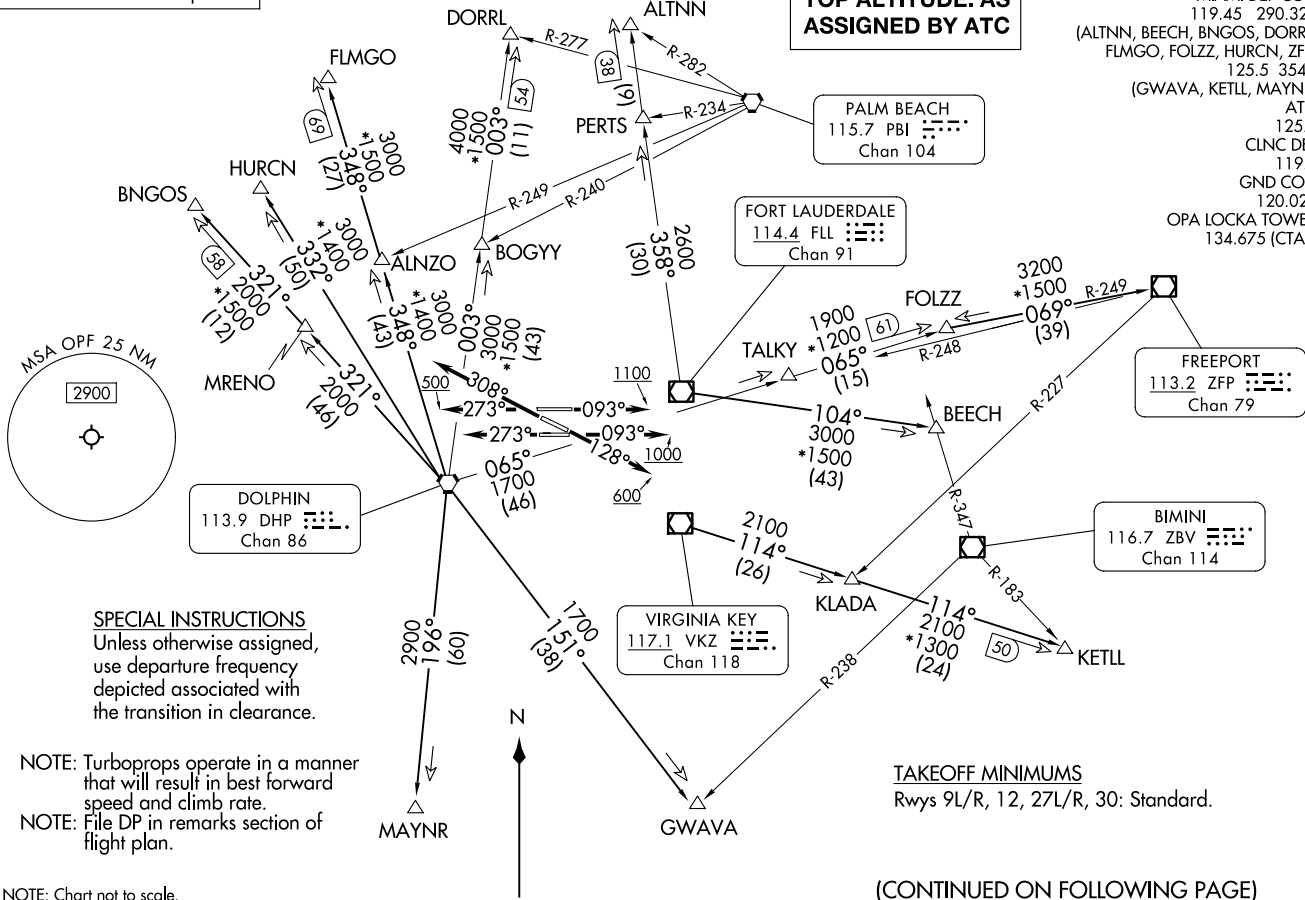
MIAMI TWO DEPARTURE
(MIA2.MIA) 26DEC24

MIAMI, FLORIDA
MIAMI-OPA LOCKA EXEC (OPT)
(MIA2.MIA) 26DEC24

RADAR and DME required.

**TOP ALTITUDE: AS
ASSIGNED BY ATC**

MIAMI DEP CON
119.45 290.325
(ALTNN, BEECH, BNGOS, DORRL,
FLMGO, FOLZZ, HURCN, ZFP)
125.5 354.1
(GWAVA, KETLL, MAYNR)
ATIS
125.9
CLNC DEL
119.2
GND CON
120.025
OPA LOCKA TOWER ★
134.675 (CTAF)



SPECIAL INSTRUCTIONS
Unless otherwise assigned,
use departure frequency
depicted associated with
the transition in clearance.

NOTE: Turboprops operate in a manner
that will result in best forward
speed and climb rate.
NOTE: File DP in remarks section of
flight plan.

TAKEOFF MINIMUMS
Rwys 9L/R, 12, 27L/R, 30: Standard.

NOTE: Chart not to scale.

(CONTINUED ON FOLLOWING PAGE)

(MIA2.MIA) 26DEC24
MIAMI TWO DEPARTURE

AL-256 (FAA)

MIAMI-OPA LOCKA EXEC (OPT)
MIAMI, FLORIDA

MIAMI TWO DEPARTURE



DEPARTURE ROUTE DESCRIPTION

TAKEOFF RUNWAY 9L: Climb on heading 093° to 1100 before turning north, thence...

TAKEOFF RUNWAY 9R: Climb on heading 093° to 1000 before turning north, thence...

TAKEOFF RUNWAY 12: Climb on heading 128° to 600 before turning north, thence...

TAKEOFF RUNWAY 27L: Climb on heading 273° thence...

TAKEOFF RUNWAY 27R: Climb on heading 273° to 500 before turning north, thence...

TAKEOFF RUNWAY 30: Climb on heading 308° thence...

... on transition, maintain ATC assigned altitude. Expect filed altitude 10 minutes after departure.

ALTNN TRANSITION (MIA2.ALTNN): From over FLL VOR/DME on FLL R-358 to ALTNN.

BEECH TRANSITION (MIA2.BEECH): From over FLL VOR/DME on FLL R-104 to BEECH.

BNGOS TRANSITION (MIA2.BNGOS): From over DHP VORTAC on DHP R-321 to BNGOS.

DORRL TRANSITION (MIA2.DORRL): From over DHP VORTAC on DHP R-003 to DORRL.

FLMGO TRANSITION (MIA2.FLMGO): From over DHP VORTAC on DHP R-348 to FLMGO.

FOLZZ TRANSITION (MIA2.FOLZZ): From over DHP VORTAC on DHP R-065 to FOLZZ.

FREEPORT TRANSITION (MIA2.ZFP): From over DHP VORTAC on DHP R-065 to FOLZZ then on ZFP R-249 to ZFP VOR/DME.

GWAVA TRANSITION (MIA2.GWAVA): From over DHP VORTAC on DHP R-151 to GWAVA.

HURCN TRANSITION (MIA2.HURCN): From over DHP VORTAC on DHP R-332 to HURCN.

KETLL TRANSITION (MIA2.KETLL): From over VKZ VOR/DME on VKZ R-114 to KETLL.

MAYNR TRANSITION (MIA2.MAYNR): From over DHP VORTAC on DHP R-196 to MAYNR.

SE-3, 20 FEB 2025 to 20 MAR 2025

SE-3, 20 FEB 2025 to 20 MAR 2025