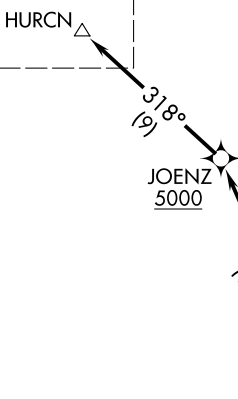


HURCN FOUR DEPARTURE (RNAV) Departure Routes
(HURCN4.HURCN) 21 MAR 24

MIAMI, FLORIDA
MIAMI INTL (MIA)

See following page
for transition routes.

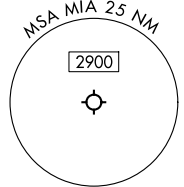


RNAV-1 DME/DME/IRU or GPS.
RADAR required.

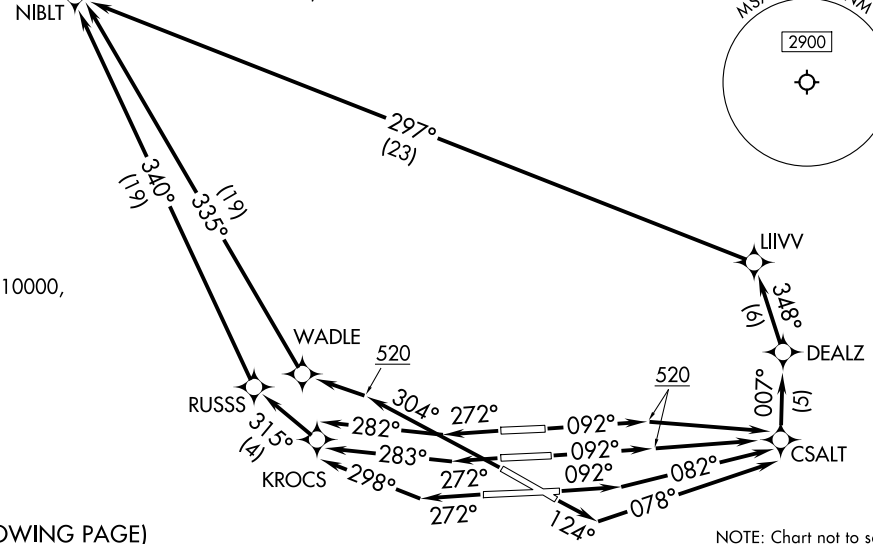
**TOP ALTITUDE:
5000**

MIAMI DEP CON
119.45 290.325
D-ATIS
133.675
CLNC DEL
135.35
CPDLC
GND CON
(Rwys 8L/R, 12, 26L/R)
121.8 348.6
(Rwys 9, 27, 30)
127.5 348.6
MIAMI TOWER
118.3 256.9

TAKEOFF MINIMUMS
 Rwy 8L: Standard with minimum climb of 500'/NM to 520, then minimum climb of 215' to 1400.
 Rwy 8R: Standard with minimum climb of 500'/NM to 520, then minimum climb of 235' to 1400.
 Rwy 9: Standard with minimum climb of 500'/NM to 520, then minimum climb of 240' to 1400.
 Rwy 12: Standard with minimum climb of 500'/NM to 520, then minimum climb of 230' to 1400.
 Rwys 26L/R, 27, 30: Standard with minimum climb of 500'/NM to 520.



NOTE: Jet aircraft only.
NOTE: Accelerate to 250K until leaving 10000, if unable, advise ATC.



(CONTINUED ON FOLLOWING PAGE)

NOTE: Chart not to scale.

(HURCN4.HURCN) 24081
HURCN FOUR DEPARTURE (RNAV) Departure Routes
AL-257 (FAA)

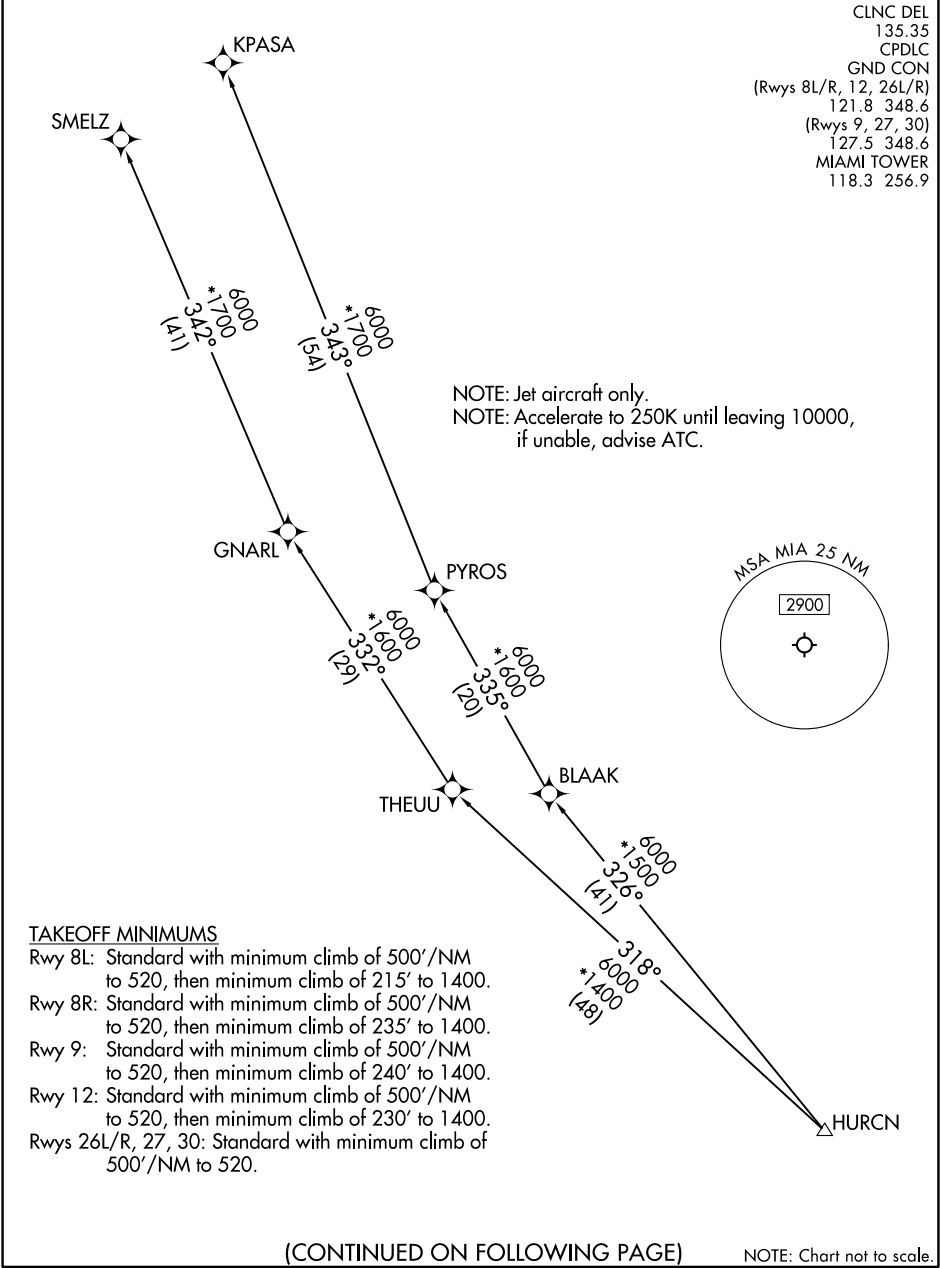
MIAMI INTL (MIA)
MIAMI, FLORIDA

HURCN FOUR DEPARTURE (RNAV) Transition Routes

RNAV-1 DME/DME/IRU or GPS.
RADAR required.

TOP ALTITUDE:
5000

MIAMI DEP CON
119.45 290.325
D-ATIS
133.675
CLNC DEL
135.35
CPDLC
GND CON
(Rwys 8L/R, 12, 26L/R)
121.8 348.6
(Rwys 9, 27, 30)
127.5 348.6
MIAMI TOWER
118.3 256.9



SE-3, 20 FEB 2025 to 20 MAR 2025

SE-3, 20 FEB 2025 to 20 MAR 2025

(CONTINUED ON FOLLOWING PAGE)

NOTE: Chart not to scale.

HURCN FOUR DEPARTURE(RNAV)



DEPARTURE ROUTE DESCRIPTION

SEE ADDITIONAL REQUIREMENTS ON AAUP

TAKEOFF RUNWAYS 8L/R: Climb on heading 092° to 520, then direct CSALT, then on track 007° to DEALZ, then on track 348° to LIIVV, then on track 297° to NIBLT, then on track 342° to cross JOENZ at or above 5000, thence. . .

TAKEOFF RUNWAY 9: Climb on heading 092° to intercept course 082° to CSALT, then on track 007° to DEALZ, then on track 348° to LIIVV, then on track 297° to NIBLT, then on track 342° to cross JOENZ at or above 5000, thence. . .

TAKEOFF RUNWAY 12: Climb on heading 124° to intercept course 078° to CSALT, then on track 007° to DEALZ, then on track 348° to LIIV, then on track 297° to NIBLT, then on track 342° to cross JOENZ at or above 5000, thence. . .

TAKEOFF RUNWAY 26L: Climb on heading 272° to intercept course 283° to KROCS, then on track 315° to RUSSS, then on track 340° to NIBLT, then on track 342° to cross JOENZ at or above 5000, thence. . .

TAKEOFF RUNWAY 26R: Climb on heading 272° to intercept course 282° to KROCS, then on track 315° to RUSSS, then on track 340° to NIBLT, then on track 342° to cross JOENZ at or above 5000, thence. . .

TAKEOFF RUNWAY 27: Climb on heading 272° to intercept course 298° to KROCS, then on track 315° to RUSSS, then on track 340° to NIBLT, then on track 342° to cross JOENZ at or above 5000, thence. . .

TAKEOFF RUNWAY 30: Climb on heading 304° to 520, then direct WADLE, then on track 335° to NIBLT, then on track 342° to cross JOENZ at or above 5000, thence. . .

. . .on track 318° to HURCN, then on transition, maintain 5000. Expect clearance to filed altitude within 10 minutes after departure.

KPASA TRANSITION (HURCN4.KPASA)

SMELZ TRANSITION (HURCN4.SMELZ)

SE-3, 20 FEB 2025 to 20 MAR 2025

SE-3, 20 FEB 2025 to 20 MAR 2025