

MIAMI, FLORIDA

AL-257 (FAA)

24137

WAAS CH <b>42703</b> <b>W08A</b>	APP CRS <b>092°</b>	Rwy Idg TDZE Apt Elev	<b>8600</b> <b>9</b> <b>9</b>
--	------------------------	-----------------------------	-------------------------------------

# RNAV (GPS) RWY 8L

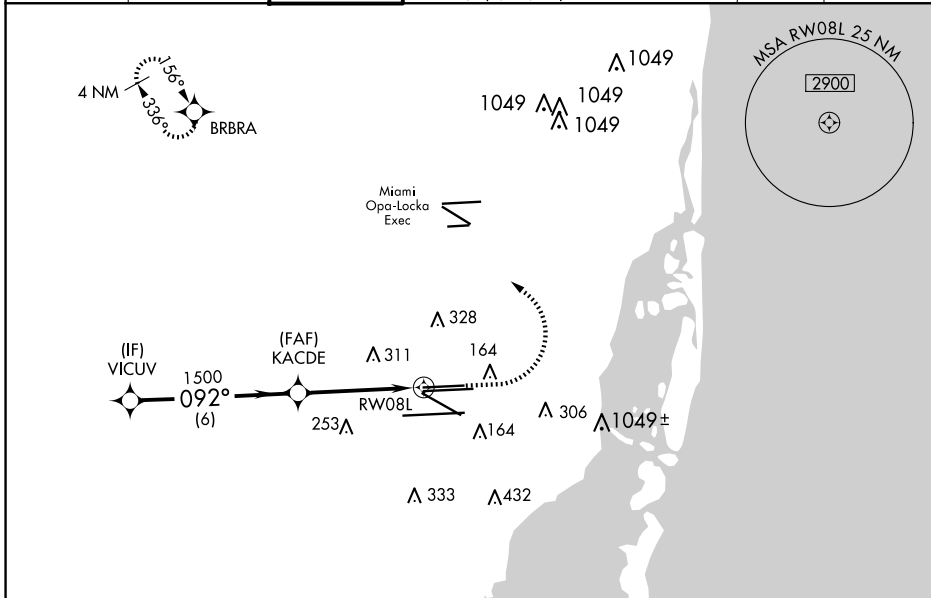
MIAMI INTL (MIA)

RNP APCH.

▼ For uncompensated Baro-VNAV systems, LNAV/VNAV NA below 5°C (41°F) or above 54°C (130°F). Simultaneous approach authorized with Rwy 9. Rwy 8L helicopter visibility reduction below 3/4 SM NA. LNAV procedure NA during simultaneous operations. Use of FD or AP providing RNAV track guidance required during simultaneous operations.

MISSED APPROACH: Climb to 800 then climbing left turn to 3000 direct BRBRA and hold.

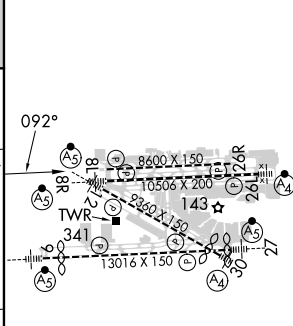
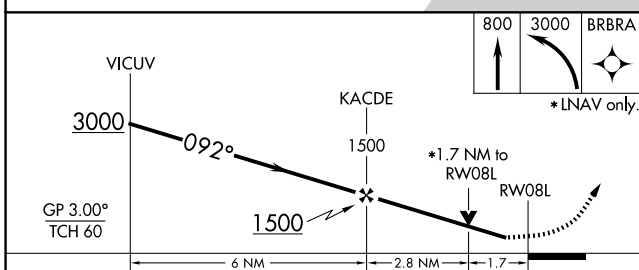
D-ATIS ARR <b>119.15</b> DEP <b>133.675</b>	MIAMI APP CON <b>124.85 322.3</b>	MIAMI TOWER <b>118.3 256.9</b>	GND CON <b>121.8</b> (8L/8R/12/26L/26R) <b>127.5</b> (9/27/30)	<b>348.6</b>	CLNC DEL <b>135.35</b>	CPDLC
---	--------------------------------------	-----------------------------------	--	--------------	---------------------------	-------



SE-3, 20 FEB 2025 to 20 MAR 2025

SE-3, 20 FEB 2025 to 20 MAR 2025

ELEV 9	<b>D</b> TDZE 9
--------	-----------------



CATEGORY	A	B	C	D
LPV DA	279-1		270 (300-1)	
LNAV/VNAV DA	513-1 5/8		504 (600-1 5/8)	
LNAV MDA	600-1	591 (600-1)	600-1 3/4	591 (600-1 3/4)

TDZ/CL Rwy 8R  
REIL Rwys 8L and 26R  
HIRL all Rwys

MIAMI, FLORIDA  
Amdt 2B 30JAN20

25°48'N-80°17'W

# MIAMI INTL (MIA) RNAV (GPS) RWY 8L