

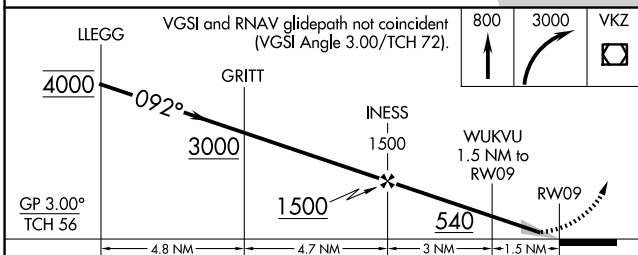
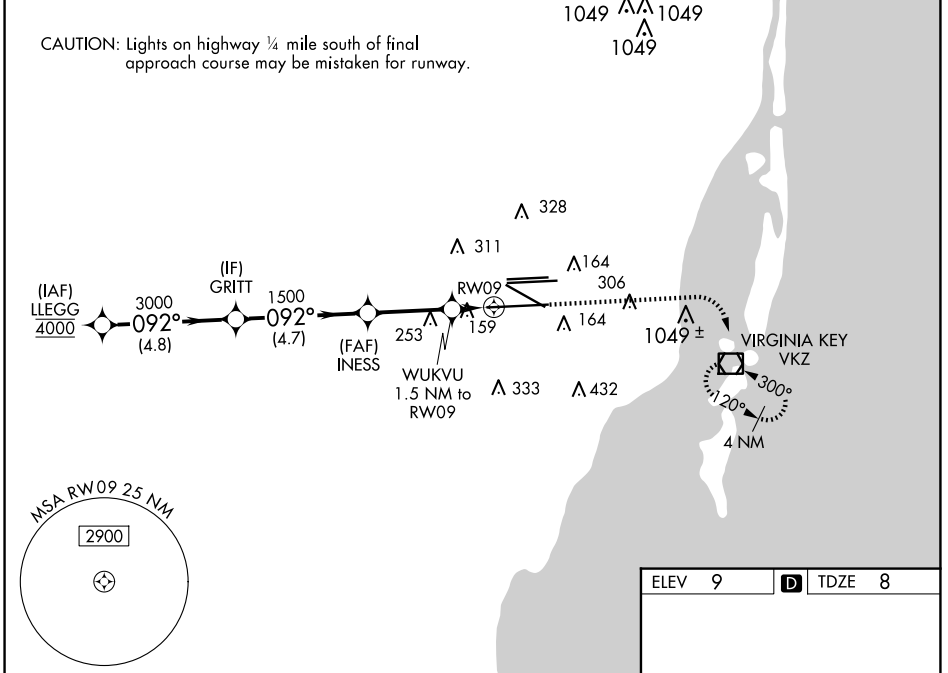
WAAS CH 81931 W09A	APP CRS 092°	Rwy Idg 11397 TDZE 8 Apt Elev 9
--	------------------------	--

RNAV (GPS) RWY 9

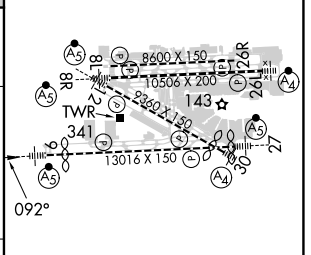
MIAMI INTL (MIA)

RNP APCH - GPS.	MALSRL 	MISSED APPROACH: Climb to 800 then climbing right turn to 3000 direct VKZ VOR/DME and hold, continue climb-in-hold to 3000.
<p>▼ For uncompensated Baro-VNAV systems, LNAV/VNAV NA below 8°C or above 54°C. Simultaneous approach authorized. LNAV procedure NA during simultaneous operations. Use of FD or AP required during simultaneous operations. For inop ALS, increase LPV Cat E visibility to RVR 4000, LNAV/VNAV all Cats visibility to RVR 6000, LNAV Cat E visibility to 1$\frac{1}{8}$ SM. *RVR 1800 authorized with use of FD or AP or HUD to DA.</p>		

D-ATIS	MIAMI APP CON	MIAMI TOWER	GND CON	CLNC DEL	CPDLC
ARR 119.15 DEP 133.675	124.85 322.3	118.3 256.9	121.8 (Rwys 8L/8R/12/26L/26R) 127.5 (Rwys 9/27/30)	348.6	



ELEV 9	D TDZE 8
--------	-----------------



CATEGORY	A	B	C	D	E
LPV DA*	208/24		200 (200- $\frac{1}{2}$)		
LNAV/VNAV DA	426/40		418 (500- $\frac{3}{4}$)		
LNAV MDA	460/24	452 (500- $\frac{1}{2}$)	460/45	452 (500- $\frac{7}{8}$)	

TDZ/CL Rwy 8R
REIL Rwys 8L and 26R
HIRL all Rwys

SE-3, 20 FEB 2025 to 20 MAR 2025

SE-3, 20 FEB 2025 to 20 MAR 2025