

# HI-VOR or TACAN RWY 16R

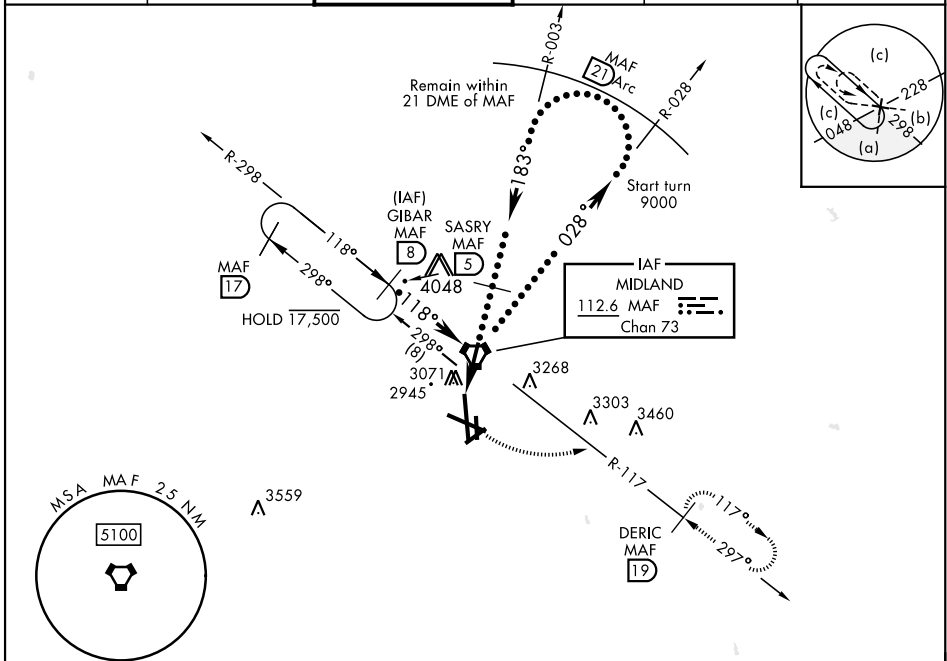
VORTAC MAF <b>112.6</b> Chan <b>73</b>	APCH CRS <b>183°</b>	Rwy Idg TDZE Arprt Elev <b>9501</b> <b>2872</b> <b>2872</b>
--	-------------------------	--

[USAF] MIDLAND INTL AIR AND SPACE PORT (KMAF)

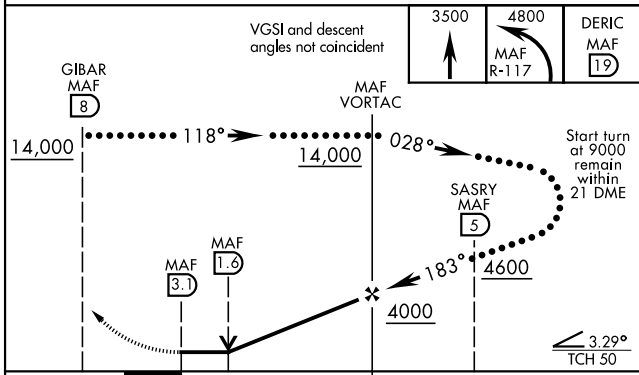
DME required  
\* Circling Rwy 16L not authorized at night.

MISSED APPROACH: Climb to 3500 then climbing left turn to 4800 on MAF VORTAC R-117 to DERIC/MAF 19° DME and hold.

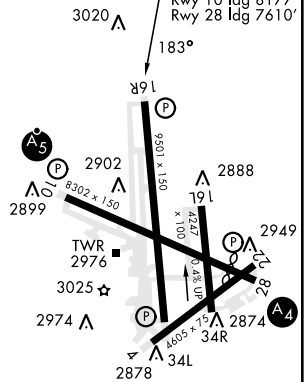
ATIS ★ <b>126.8 235.975</b>	APP CON <b>124.6 290.4</b>	TOWER ★ <b>118.7(CTAF) 273.45</b>	GND CON <b>121.9 348.6</b>	CLNC DEL <b>118.05 317.65</b>	UNICOM <b>122.95</b>
--------------------------------	-------------------------------	--------------------------------------	-------------------------------	----------------------------------	-------------------------



EMERG SAFE ALT 100 NM 7000



ELEV	2872	TDZE	2872
------	------	------	------



CATEGORY	C	D	E
S-16R	3400-1½	528	(600-1½)
CIRCUING*	3440-1½ 568 (600-1½)	3520-2 648 (700-2)	3600-2½ 728 (800-2½)

HIRL Rwy 10-28, 16R-34L  
MIRL Rwy 4-22, 16L-34R  
REIL Rwy 34L

# HI-VOR or TACAN RWY 16R

SC-3, 20 FEB 2025 to 20 MAR 2025

SC-3, 20 FEB 2025 to 20 MAR 2025