

LOC/DME I-MAF 110.3 Chan 40	APP CRS 105°	Rwy Idg TDZE Apt Elev	8177 2869 2872
---	------------------------	-----------------------------	---

ILS or LOC RWY 10

MIDLAND INTL AIR AND SPACE PORT (MAF)

⚠ Circling Rwy 16L NA at night. For inop ALS, increase S-ILS 10 Cat E visibility to RVR 4000, S-LOC 10 Cat E visibility to 1 1/4 SM. USILE fix minimums increase S-LOC 10 Cat E visibility to 1 1/8 SM. ** RVR 1800 authorized with use of FD or AP or HUD to DA.

MALS
MISSED APPROACH: Climb to 4900 on heading 105° and on MAF VORTAC R-117 to DERIC INT/MAF 19 DME and hold.

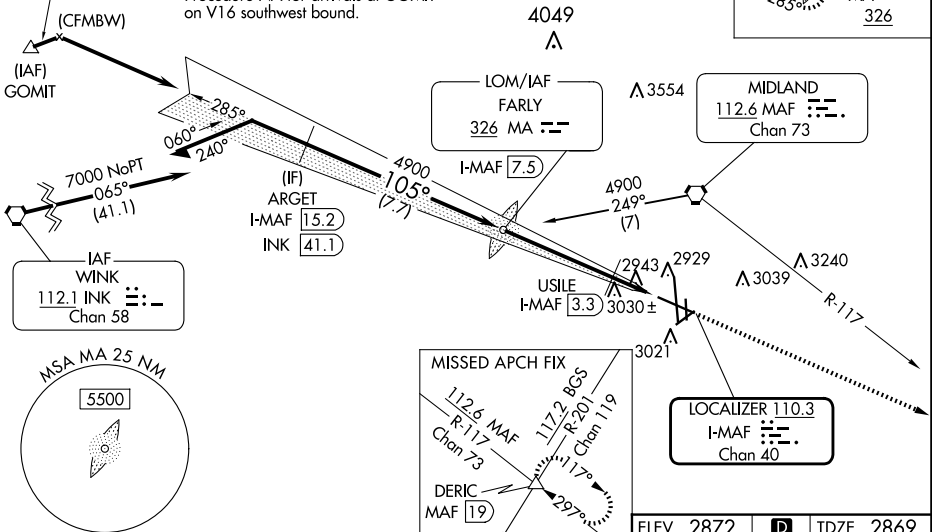
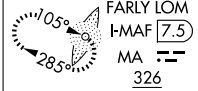
ATIS 126.8 235.975	MIDLAND APP CON* 124.6 290.4	MIDLAND TOWER* 118.7 (CTAF) 0 273.45	GND CON 121.9 348.6	CLNC DEL 118.05 317.65	UNICOM 122.95
------------------------------	--	--	-------------------------------	----------------------------------	-------------------------

ADF OR DME REQUIRED

4900 NoPT to ARGET
060° (1.1)
and LOC (9.6)

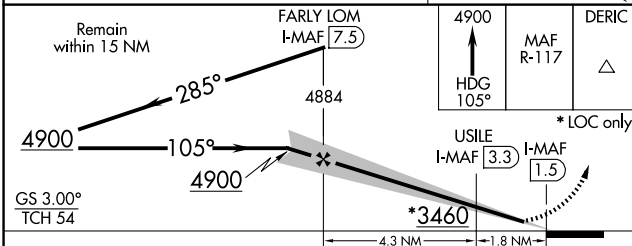
Procedure NA for arrivals at GOMIT on V16 southwest bound.

ALTERNATE MISSED APCH FIX

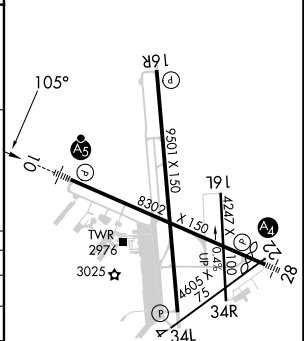


SC-3, 20 FEB 2025 to 20 MAR 2025

SC-3, 20 FEB 2025 to 20 MAR 2025



ELEV 2872	D	TDZE 2869
-----------	----------	-----------



CATEGORY	A	B	C	D	E
S-ILS 10 **	3069/24 200 (200-1/2)				
S-LOC 10	3460/24	591 (600-1/2)	3460-1 1/4	591 (600-1 1/4)	
CIRCLING	3460-1	588 (600-1)	3460-1 3/4 588 (600-1 3/4)	3520-2 648 (700-2)	3600-2 1/2 728 (800-2 1/2)
USILE FIX MINIMUMS					
S-LOC 10	3420/24	551 (600-1/2)	3420/60	551 (600-1 1/4)	
CIRCLING	3440-1	568 (600-1)	3440-1 1/8 568 (600-1 1/8)	3520-2 648 (700-2)	3600-2 1/2 728 (800-2 1/2)

REL Rwy 34L MIRL Rwys 4-22 and 16L-34R HIRL Rwys 10-28 and 16R-34L FAF to MAP 6.1 NM					
Knots	60	90	120	150	180
Min:Sec	6:06	4:04	3:03	2:26	2:02