

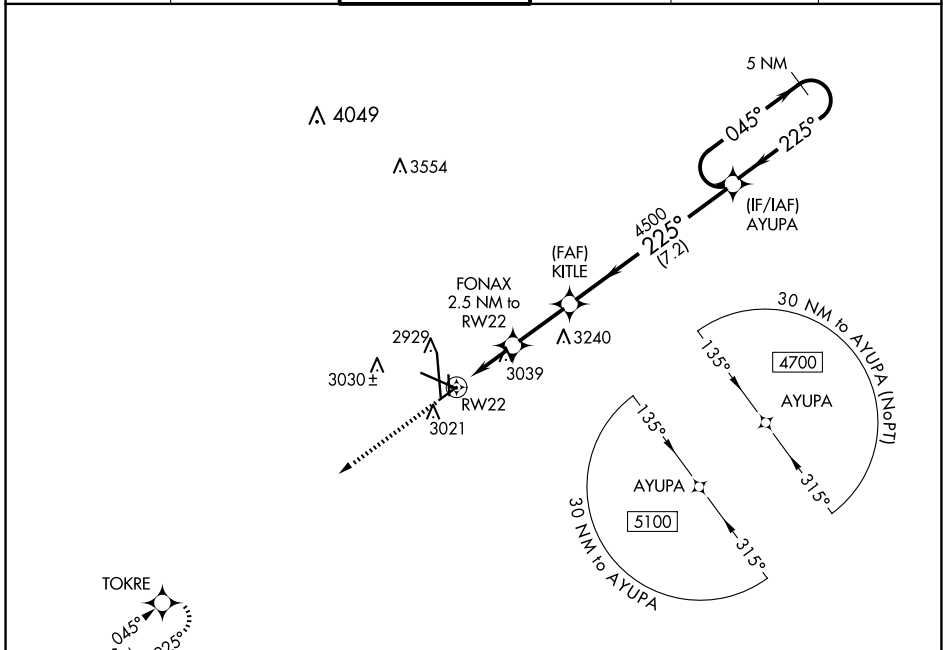
WAAS CH <b>50429</b> <b>W22A</b>	APP CRS <b>225°</b>	Rwy Idg TDZE Apt Elev	<b>4605</b> <b>2855</b> <b>2872</b>
--	------------------------	-----------------------------	---

# RNAV (GPS) RWY 22

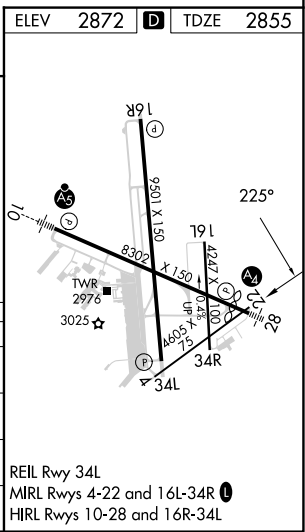
MIDLAND INTL AIR AND SPACE PORT (M.A.F.)

RNP APCH.	MISSED APPROACH: Climb to 5000 direct TOKRE and hold.
<p>▼ For uncompensated Baro-VNAV systems, LNAV/VNAV NA below -11°C or above 25°C. Circling Rwy 16L NA at night.</p>	

ATIS <b>126.8 235.975</b>	MIDLAND APP CON* <b>124.6 290.4</b>	MIDLAND TOWER* <b>118.7 (CTAF) 0273.45</b>	GND CON <b>121.9 348.6</b>	CLNC DEL <b>118.05 317.65</b>	UNICOM <b>122.95</b>
------------------------------	--	---	-------------------------------	----------------------------------	-------------------------



ELEV	2872	D	TDZE	2855
5000	TOKRE			
*LNAV only	FONAX 2.5 NM to RW22	KITLE 4500	AYUPA 4700	5 NM Holding Pattern
	*1.3 NM to RW22	*3700	4500	GP 3.00° TCH 50
	1.3	1.2	2.5 NM	7.2 NM
CATEGORY	A	B	C	D
LPV DA	3055-3/4		200 (200-3/4)	
LNAV/VNAV DA	3317-13/8		462 (500-13/8)	
LNAV MDA	3320-1	465 (500-1)	3320-13/8	465 (500-13/8)
<b>C</b> CIRCLING	3440-1	568 (600-1)	3440-1 1/2	3520-2
			568 (600-1 1/2)	648 (700-2)



SC-3, 20 FEB 2025 to 20 MAR 2025

SC-3, 20 FEB 2025 to 20 MAR 2025