

APP CRS	Rwy Idg	5004
165°	TDZE	5033
	Apt Elev	5039

RNAV (GPS) RWY 16

MILFORD MUNI/BEN AND JUDY BRISCOE FLD (MLF)

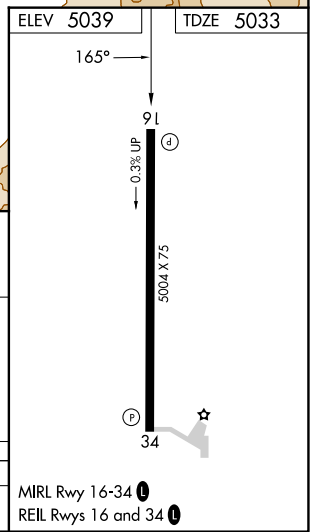
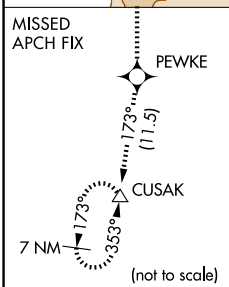
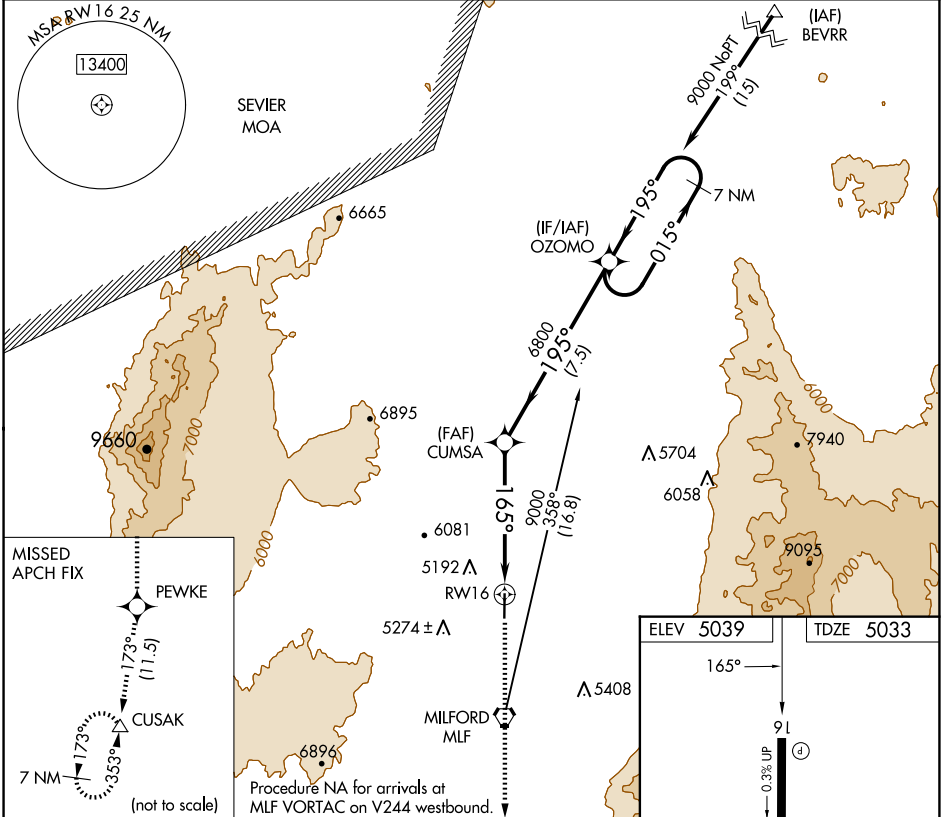
RNP APCH.

When local altimeter setting not received, use Cedar City altimeter setting and increase all MDA 200 feet and increase LNAV Cat C/D visibility 1/2 mile.

-27°C

MISSED APPROACH: Climb to 10000 direct PEWKE and on track 173° to CUSAK and hold.

ASOS 135.025	SALT LAKE CENTER 125.575 379.275	UNICOM 122.8 (CTAF)
------------------------	--	-------------------------------



7 NM Holding Pattern	OZOMO	10000	PEWKE	tr 173°	CUSAK
9000	← 015°	→ 195°	195°	3.00° TCH 40	RW16
		6800	165°		
			7.5 NM		5.5 NM
CATEGORY	A	B	C	D	
LNAV MDA	5480-1	447 (500-1)	5480-1 3/8	447 (500-1 3/8)	

SW-4, 20 FEB 2025 to 20 MAR 2025

SW-4, 20 FEB 2025 to 20 MAR 2025