

WAAS CH 78328 W11A	APP CRS 107°	Rwy Idg TDZE Apt Elev	4713 408 408
--	------------------------	-----------------------------	---

RNAV (GPS) RWY 11

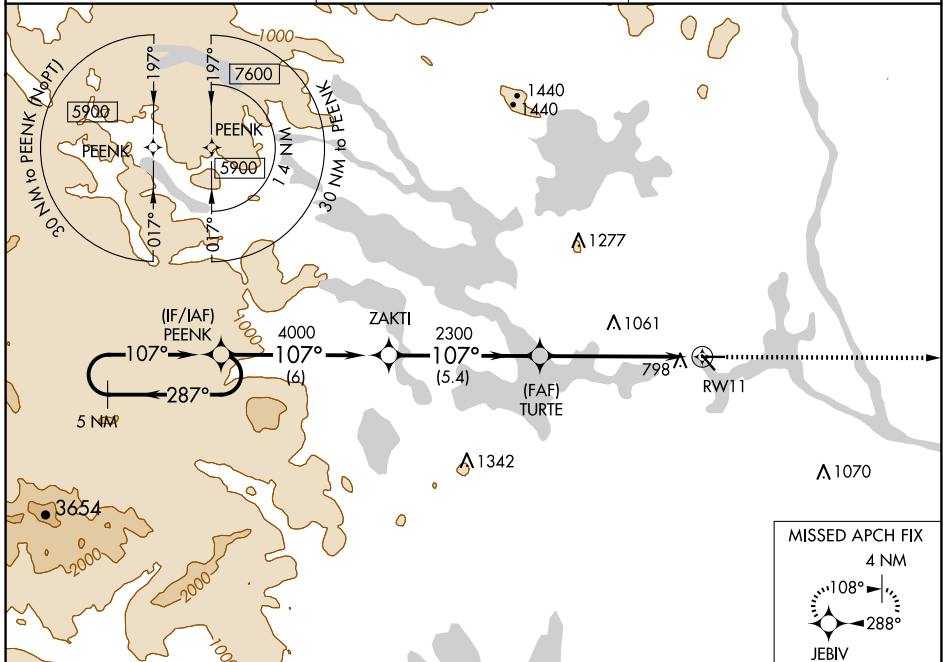
MILLINOCKET MUNI (MLT)

RNP APCH.

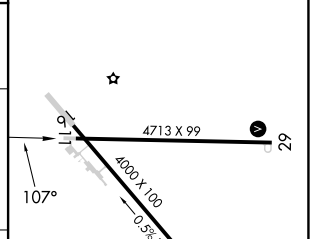
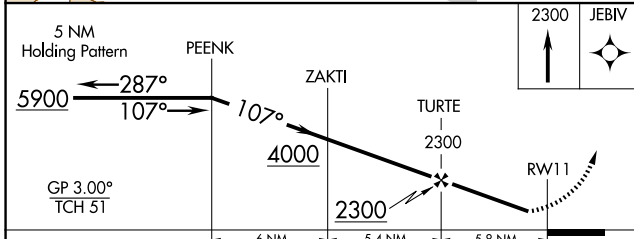
Baro-VNAV NA when using Houlton altimeter setting. For uncompensated Baro-VNAV systems, LNAV/VNAV NA below -15°C or above 41°C. Rwy 11 helicopter visibility reduction below 1 SM NA. When local altimeter setting not received, use Houlton altimeter setting and increase all DA and MDA 120 feet; increase LPV and LNAV/VNAV visibility all Cats ½ SM and LNAV visibility Cat B ¼ SM and Cat C/D ½ SM. Procedure NA at night.

MISSED APPROACH:
Climb to 2300 direct JEBIV and hold.

ASOS 135.225	BOSTON CENTER 120.25 346.4	UNICOM 122.8 (CTAF)
------------------------	--------------------------------------	-------------------------------



ELEV 408	TDZE 408
----------	----------



CATEGORY	A	B	C	D
LPV DA		929-1¾	521 (600-1¾)	
LNAV/VNAV DA		1004-2	596 (600-2)	
LNAV MDA	1100-1	692 (700-1)	1100-2	692 (700-2)

REIL Rwy 29 **1**
MIRL Rwy 11-29 **1**

NE-1, 20 FEB 2025 to 20 MAR 2025

NE-1, 20 FEB 2025 to 20 MAR 2025