

LOC/DME I-BLY <b>110.3</b> Chan <b>40</b>	APP CRS <b>191°</b>	Rwy 19R Idg <b>9205</b> TDZE <b>672</b> Apt Elev <b>728</b>	Rwy 19L Idg <b>4182</b> TDZE <b>674</b> Apt Elev <b>728</b>
---	------------------------	---	---

# ILS or LOC RWY 19R

## GENERAL MITCHELL INTL (MKE)

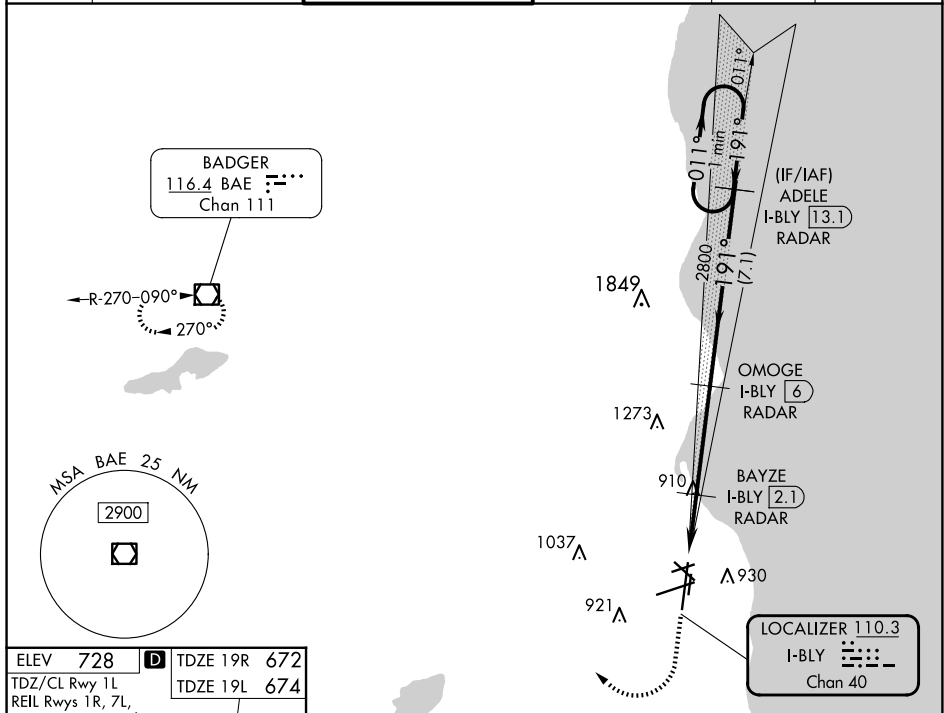
RADAR required for procedure entry, RADAR or DME required for LOC only.



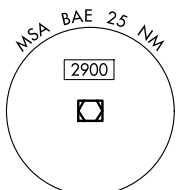
MISSED APPROACH: Climb to 2800 then right turn direct BAE VOR/DME and hold.

▼ For inop ALS, increase S-LOC 19R Cats C and D visibility to 1 3/8 SM.  
\*RVR 1800 authorized with use of FD or AP or HUD to DA.

D-ATIS <b>126.4</b>	MILWAUKEE APP CON <b>126.5 307.0</b>	MILWAUKEE TOWER <b>124.575 269.05</b>	GND CON <b>121.8 263.125</b>	CLNC DEL <b>120.8</b>	CPDLC
------------------------	---	--	---------------------------------	--------------------------	-------

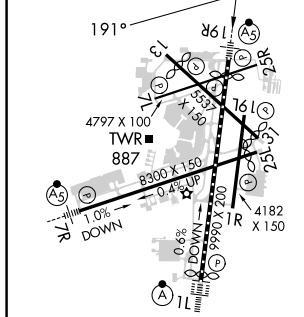


**BADGER**  
116.4 BAE  
Chan 111



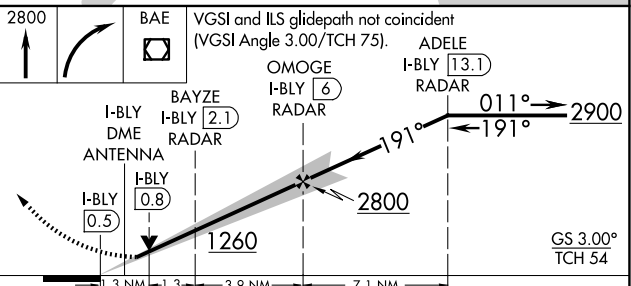
ELEV <b>728</b>	TDZE 19R <b>672</b>
TDZ/CL Rwy 1L	TDZE 19L <b>674</b>

REIL Rwys 1R, 7L, 13, 25L, 25R, and 31



HIRL Rwys 1L-19R and 7R-25L  
MIRL Rwys 1R-19L, 13-31, and 7L-25R  
FAF to MAP 6.5 NM

Knots	60	90	120	150	180
Min:Sec	6:30	4:20	3:15	2:36	2:10



CATEGORY	A	B	C	D
S-ILS 19R*	872/24 200 (200-1/2)			
S-LOC 19R	1160/24	488 (500-1/2)	1160/50	488 (500-1)
SIDESTEP 19L	1160-1	486 (500-1)	1160-1/2 486 (500-1/2)	1160-2 486 (500-2)
<input checked="" type="checkbox"/> CIRCLING	1240-1	512 (600-1)	1240-1/2 512 (600-1/2)	1360-2 632 (700-2)

EC-3, 20 FEB 2025 to 20 MAR 2025

EC-3, 20 FEB 2025 to 20 MAR 2025