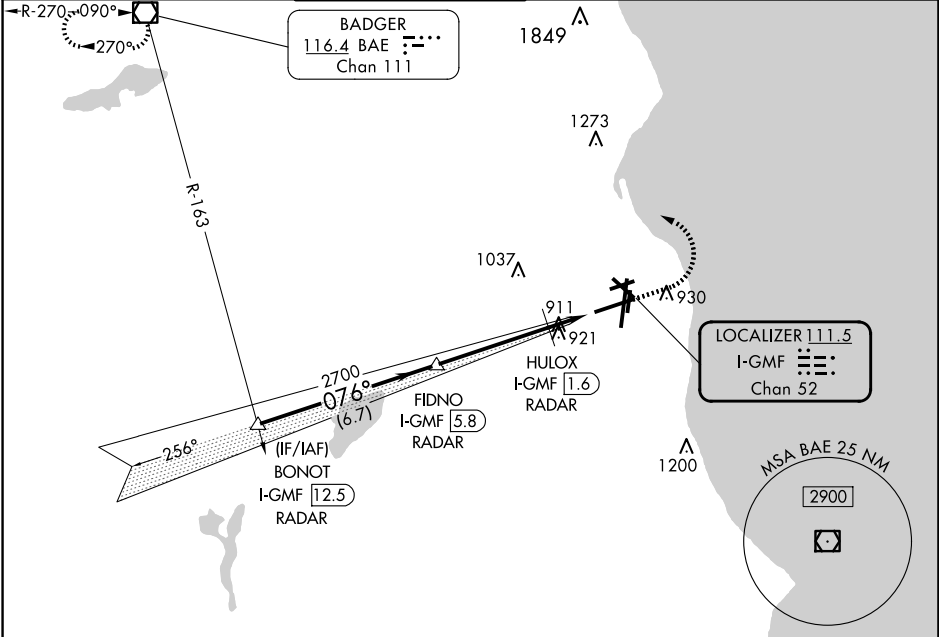


LOC/DME I-GMF <b>111.5</b> Chan <b>52</b>	APP CRS <b>076°</b>	Rwy Idg <b>8012</b> TDZE <b>729</b> Apt Elev <b>729</b>
---	------------------------	---

# ILS or LOC RWY 7R

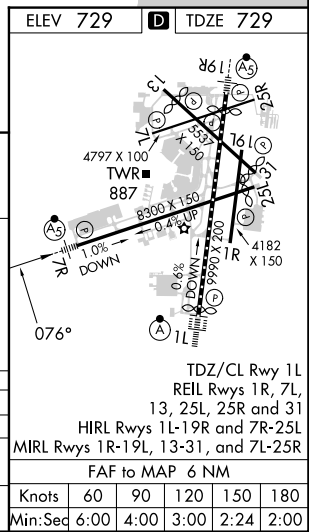
GENERAL MITCHELL INTL (MKE)

RADAR required for procedure entry. DME or RADAR required.			MALSR	MISSED APPROACH: Climb to 2900 then left turn direct BAE VOR/DME and hold.	
# RVR 1800 authorized with use of FD or AP or HUD to DA.					
D-ATIS <b>126.4</b>	MILWAUKEE APP CON <b>126.5 307.0</b>	MILWAUKEE TOWER <b>124.575 269.05</b>	GND CON <b>121.8 263.125</b>	CLNC DEL <b>120.8</b>	CPDLC



EC-3, 20 FEB 2025 to 20 MAR 2025

EC-3, 20 FEB 2025 to 20 MAR 2025



BONOT I-GMF 12.5 RADAR	VGS1 and ILS glidepath not coincident (VGS1 Angle 3.00/TCH 63).		2900	BAE
FIDNO I-GMF 5.8 RADAR	HULOX I-GMF 1.6 RADAR	I-GMF DME ANTENNA	* I-GMF 1	* LOC only.
2900	2700	* 1280		
GS 3.00° TCH 50	076°			
	6.7 NM	4.2 NM	0.6 NM	1.2
CATEGORY	A	B	C	D
S-ILS 7R #	929/24 200 (200-½)			
S-LOC 7R	1180/24	451 (500-½)	1180/45	451 (500-¾)
<b>C</b> CIRCLING	1240-1	511 (600-1)	1240-1½ 511 (600-½)	1360-2 631 (700-2)