

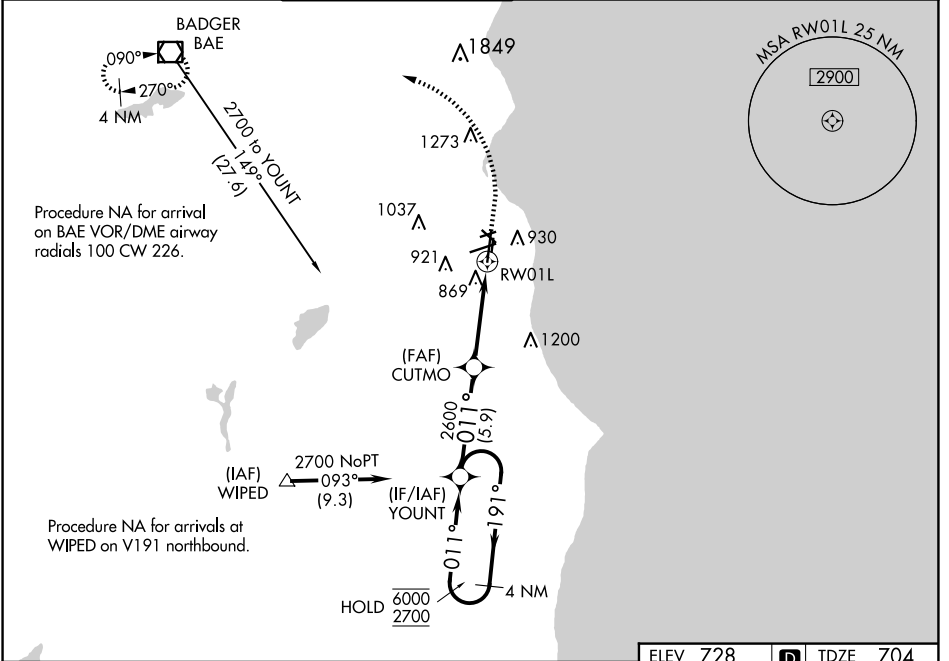
WAAS CH 45742 W01A	APP CRS 011°	Rwy Idg TDZE 704 Apt Elev 728	9080
--	------------------------	---	-------------

RNAV (GPS) RWY 1L

GENERAL MITCHELL INTL (MKE)

RNP APCH - GPS	ALSF-2	MISSED APPROACH: Climb to 1130 then climbing left turn to 2900 direct BAE VOR/DME and hold.
<p>▼ For uncompensated Baro-VNAV systems, LNAV/VNAV NA below -19°C or above 54°C. For inop ALS increase LNAV/VNAV all Cats visibility to RVR 6000, increase LNAV Cat C/D visibility to RVR 6000.</p>		

D-ATIS 126.4	MILWAUKEE APP CON 126.5 307.0	MILWAUKEE TOWER 124.575 269.05	GND CON 121.8 263.125	CLNC DEL 120.8	CPDLC
------------------------	---	--	---------------------------------	--------------------------	-------



VGSI and RNAV glidepath not coincident (VGSI Angle 3.00/TCH 72).

4 NM Holding Pattern

YOUNT

CUTMO

RW01L

6000 ← 191°

2700 011°

GP 3.00° TCH 56

011°

2600

2600

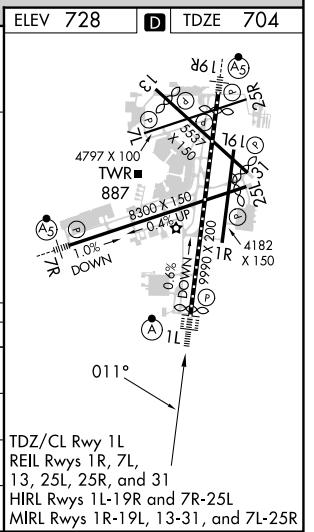
1.1 NM to RW01L

5.9 NM

4.7 NM

1.1 NM

CATEGORY	A	B	C	D
LPV DA		904/18	200 (200-½)	
LNAV/VNAV DA		1120/40	416 (400-¾)	
LNAV MDA	1120/24	416 (400-½)	1120/40	416 (400-¾)
C CIRCLING	1240-1	512 (600-1)	1240-1½ 512 (600-1½)	1360-2 632 (700-2)



EC-3, 20 FEB 2025 to 20 MAR 2025

EC-3, 20 FEB 2025 to 20 MAR 2025